



**Halton & St Helens**  
Voluntary and Community Action



# COMMUNITY GROUPS ROOM HIRE IN ST HELENS

COMMUNITY GROUP ROOMS & SPACES TO HIRE ACROSS ST HELENS

OCTOBER 2025



**#lovesthelens**



**#STHELENSTOGETHER**

These organisations run from varied premises across the Borough and have rooms and spaces available to hire suitable for a variety of purposes and budgets. So whether you need a space for exercise and sporting activities or a room for a business presentation, a one-off hire or a weekly booking, maybe you could consider a community venue and help support our organisations.



# Locality Map



- Central St Helens
- Newton le Willows
- Haydock & Blackbrook
- North St Helens
- West St Helens
- South St Helens
- Rainhill & Bold



# Ormskirk Street United Reformed Church

King Street  
St Helens  
WA10 2JZ



## ROOM HIRE DETAILS

### Availability days and hours

Monday to Thursday - 9am to 9pm  
Friday - 9am to 4pm  
Saturday - Can be made available for evenings for concerts.

### Capacity

Rooms vary in size catering from 8 to 100 people.

### Parking

Yes

## CONTACT:

**01744 28314**

**[ormskirkstreet@outlook.com](mailto:ormskirkstreet@outlook.com)**

### Seating arrangements

Varies rooms catering from 8-100 people  
Boardroom style  
Concert style  
Theatre style

### Disability

Lift to all floors.

### Additional information

Induction loop system, accessible toilet, baby change facilities, kitchen.

## WEBSITE

**[www.ormskirkstreeturc.org.uk](http://www.ormskirkstreeturc.org.uk)**



# The Beacon (YMCA)

College Street  
St Helens  
WA10 2TJ

## ROOM HIRE DETAILS

### Availability days and hours

YMCA St Helens has 2 fantastic meeting room spaces available to hire at The Beacon in the centre of St Helens. Room 1 and Room 2 can be hired by the hour in 3 hour blocks or by the day.

### Beacon Opening Hours

Mon/Thur 7.15am – 9.00pm  
Fri 7.15am – 8.00pm

### Parking

Pay and display parking on Ward Street.

### CONTACT:

**01744 455046**

**[Beacon.Reception@sthelensymca.org.uk](mailto:Beacon.Reception@sthelensymca.org.uk)**



### Seating arrangements

Contact venue for further details

### Disability

Meeting rooms on ground floor.  
Lift available to all other floors.

### Additional information

Tea and coffee, flip chart, pens and pad - available at a charge  
Projector Screen and Projector are available at no extra cost.

### WEBSITE

**[www.ymcasthelens.org.uk](http://www.ymcasthelens.org.uk)**

# Millennium Centre

Corporation St  
St Helens  
WA10 1HJ

## ROOM HIRE DETAILS

A variety of a conferencing and meeting room facilities that charitable organisations are welcome to use free of rent with just a small payment to the service charge.

### CONTACT:

**01744 675131**

**[contact@tmcsh.org.uk](mailto:contact@tmcsh.org.uk)**

### Seating arrangements

Contact venue for details.





# The World of Glass

Chalon Way East  
 St Helens  
 WA10 1BX

## ROOM HIRE DETAILS

**Reflections Suite.** On a private floor with private toilet facilities. 200 people.

**Sankey Suite.** 1st Floor. Accommodates up to 80 people. Screen.

**Godfrey Pilkington Gallery.** Ground Floor. Up to 80 people. Flexible space for performances or meetings.

## Additional information

The World of Glass can offer a variety of hot and cold food options for any event. Our standard buffet is a selection of sandwiches and quiches, salad and crisps, tea, coffee and water. Additional options are available, such as homemade cakes

## CONTACT:

**01744 22766**

**[www.worldofglass.com](http://www.worldofglass.com)**



# Lucem House Community Cinema

78 Corporation St  
St Helens  
WA10 1GQ

## ROOM HIRE DETAILS

### Availability days and hours

Available days and evenings. Please contact for more details

### Capacity

Cinema - 50, meeting room - 12.

### Parking

Street parking available, charge during daytime.  
Nearby public car parks - 5 minute walk.

## CONTACT:

**01744 26414**

**[info@lucemhouse.co.uk](mailto:info@lucemhouse.co.uk)**



### Seating arrangements

Cinema style seating in auditorium, fixed.  
Tables and chairs in meeting room.

### Disability

Step free access ramp to auditorium  
Steps to meeting room  
No disabled access toilets

### Additional information

Audio visual equipment, induction loop system. Raised stage and kitchen.

## WEBSITE

**[www.lucemhouse.co.uk](http://www.lucemhouse.co.uk)**





# Derbyshire Hill Family Centre

288 Derbyshire Hill Road  
Parr  
St Helens  
WA9 2LU

## ROOM HIRE DETAILS

### Availability days and hours

Large sports hall and smaller rooms available for hire during the day and evening. Please contact the venue for more details.

### Parking

On site parking

### CONTACT:

01744 611373

[catherine.brooks@torusfoundation.org.uk](mailto:catherine.brooks@torusfoundation.org.uk)

### Seating arrangements

Tables and chairs available for various configurations.

### Disability

Wheelchair accessible  
Accessible WC/Baby changing facility  
Lift  
Assistance dogs welcome  
Youth room  
Seating area  
Disabled parking

### WEBSITE

[www.thelivewelldirectory.com/services/10276](http://www.thelivewelldirectory.com/services/10276)



# St Helens Parish Church

Church Square  
St Helens  
WA10 1AF

## ROOM HIRE DETAILS

### Availability days and hours

Please contact for availabilities

### Capacity

**Upper Hall** - seated at tables: 100 (theatre format) - 160 (buffet event)

**Lower Hall** - seated at tables: 60 (theatre format) 78 (buffet event)

### Parking

There is no parking on site or outside the church. Nearby disability parking at Chalon Way and a multi-storey carpark on Bridge Street.

### CONTACT:

**01744 22909**

**[info@sthelensparishchurch.org](mailto:info@sthelensparishchurch.org)**



### Disability access

**Lower Hall** fully accessible for wheelchair access.

**Upper Hall** is accessible by lift via the church, subject to arrangement as church doors need to be staffed for security reasons

### Additional information

Audio visual equipment, staged raised area, accessible toilet, baby change and kitchen facilities.

### WEBSITE:

**[www.sthelensparishchurch.org](http://www.sthelensparishchurch.org)**

# Parr Sports Community Centre

Derbyshire Hill Road  
Parr  
WA9 2LH

## ROOM HIRE DETAILS

Three training rooms available with both peak and off peak charges. Please contact for further details and prices.

### CONTACT:

**01744 753627**

**[parrsportscommunitycentre@outlook.com](mailto:parrsportscommunitycentre@outlook.com)**



### Parking

Available on site

### Disability Access

Yes, all rooms on ground floor level and accessible.



# Wonderland Community Centre

Unit 4  
Reflection Court  
Canal Street  
St Helens  
WA10 3JQ

## ROOM HIRE DETAILS

Various rooms available to hire and Childrens themed parties available. Please contact venue for details.

### Parking

Available on site

### Disability Access

Yes, all rooms on ground floor level and accessible

## CONTACT:

**01744 613574**

**[info@wonderlandcommunitycentre.com](mailto:info@wonderlandcommunitycentre.com)**



# Deaf Resource Centre

32-40 Dentons Green Lane Street  
WA10 2QB

## ROOM HIRE DETAILS

### Availability days and hours

Please contact for availabilities

### Capacity

Lounge - 30

Hall - 50

Training - 15

Seats and tables available

### Parking

There is parking on the front of the premises but this is limited to blue badge holders only.

Whilst there are no regulations that prevent parking on residential streets, we kindly ask all users to be considerate to local residents when parking.

## CONTACT:

**01744 23887**

**[enquiries@deafnessresourcecentre.org](mailto:enquiries@deafnessresourcecentre.org)**

### Disability access

The centre is accessed via a ramp with adapted toilets on both floors and a lift to the first floor.

### Additional information

Wi-Fi, Audio visual equipment, Induction loop system, Stage or raised area, Accessible Toilet and Baby Change facilities, Kitchen, Garden / outdoor area.

The Deafness Resource Centre is on a busy bus route to and from St Helens Town Centre.

We have a number of rooms available for meetings, events, seminars etc. Rooms can be booked for one off events or for ongoing, regular sessions.

The Deafness Resource Centre is open for room hire from 9:00am-9:00pm Monday to Friday.

## WEBSITE:

**[deafnessresourcecentre.org](http://deafnessresourcecentre.org)**





# The Tunza Centre

Silkstone Works  
Boundary Road  
St Helens  
WA10 2PZ

## ROOM HIRE DETAILS

Availability days and hours.  
Please contact for availabilities.

### Capacity

150

### Parking

Parking on site

## CONTACT:

**07739039177**

**ian@tunzaspride.org.uk**



# Willowbrook Living Well

Borough Road  
St Helens  
WA10 3RN

## ROOM HIRE DETAILS

### Availability days and hours

Monday to Saturday 8am-6pm

### Capacity

60

### Seating arrangements

Theatre style 60-70 delegates  
Conference/U Shape 25 delegates  
Team building - 40 delegates  
Social Style - 38 delegates

### Parking

Large free car park

## CONTACT:

**01744 453798**

**alisonu@willowbrookhospice.org.uk**



### Disability

Access ramps and lift to conference room

### Additional information

Audio visual equipment, Induction loop system, Accessible Toilet and Baby Change facilities, Garden / outdoor area

## WEBSITE:

**www.willowbrook.org.uk**

# Peter Street Centre

Peter Street,  
St Helens  
WA10 2EQ

## ROOM HIRE DETAILS

### The Forum meeting room

Located on the ground floor, ideal for meetings of up to 10 people.

### The Green meeting room

Boardroom-style seating, perfect for hosting training sessions for up to 20 people.

### The Gallery meeting room

Can accommodate up to 25 guests. Ideal space for training sessions or seminars.

## CONTACT:

**01744 371222**

**[info@peterstreet.co.uk](mailto:info@peterstreet.co.uk)**

## WEBSITE:

**[www.peterstreet.co.uk](http://www.peterstreet.co.uk)**

## Disability

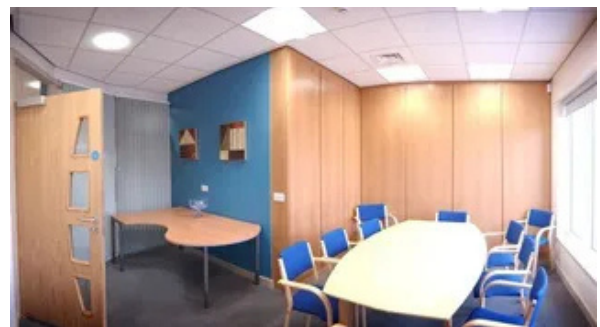
Building accessible for people with mobility affecting disabilities

## Parking

Large free car park

## Additional information

Flip charts and a projector are available upon request. Adult changing facilities.





# Eccleston Library

Broadway  
Eccleston  
St Helens  
WA10 5PJ

## ROOM HIRE DETAILS

### Availability days and hours

Monday: 10am - 5pm

Tuesday: 10am - 5pm

Wednesday: CLOSED

Thursday: 10am - 5pm

Friday: 10am - 5pm

Saturday & Sunday: CLOSED

### Capacity

Seating 25

Tables and chairs 12

## CONTACT:

**01744 677575**

**[ecclestonlibrary@sthelens.gov.uk](mailto:ecclestonlibrary@sthelens.gov.uk)**



### Disability access

Ramp access and accessible toilet

### Parking

Limited free parking available.

### Additional information

Free Wi-Fi, Ramp access into building, toilet, plasma screen

## WEBSITE:

**[www.sthelens.gov.uk](http://www.sthelens.gov.uk)**

# Lester Drive Centre

Lester Drive  
Eccleston  
St Helens  
WA10 5BF

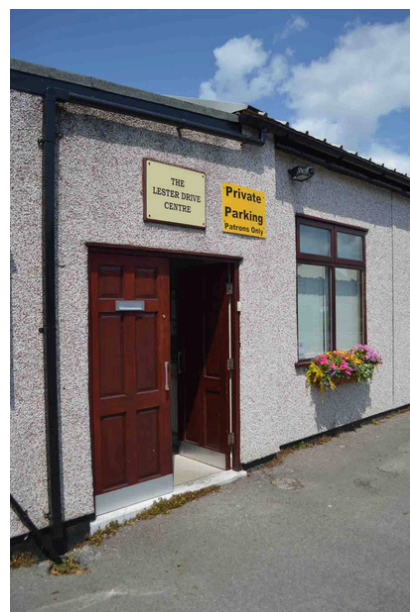
## ROOM HIRE DETAILS

The Centre is available for hire by individuals or organisations in accordance with our constitution and upon adherence to our policies and is subject to availability.

## CONTACT:

**01744 26813**

**[lesterdrivecentre@gmail.com](mailto:lesterdrivecentre@gmail.com)**



## WEBSITE:

**[www.lesterdrivecentre.org.uk](http://www.lesterdrivecentre.org.uk)**

# PERTH

## Community Centre

2 Dunedin Street  
Thatto Heath  
St Helens  
WA9 5QX

### ROOM HIRE DETAILS

Kitchen, Café area, Activity Room, Boardroom Suite, One to One Room

### Additional information

The centre is fully accessible and has:  
baby changing facilities, Wi-fi, car park  
good public transport links  
external defibrillator

### CONTACT:

**01744 621905 / 07859 761605**  
**[info@perthcommunitycentre.co.uk](mailto:info@perthcommunitycentre.co.uk)**



# Thatto Heath Library

Thatto Heath Road  
Thatto Heath  
St Helens  
WA10 3QX

### ROOM HIRE DETAILS

#### Availability days and hours

Monday: 10am - 5pm  
Tuesday: 10am - 5pm  
Wednesday: CLOSED  
Thursday: 10am - 5pm  
Friday: 10am - 5pm  
Saturday & Sunday: CLOSED

#### Capacity

Seating 16  
Tables and chairs 12

### CONTACT:

**01744 677842**  
**[thattoheathlibrary@sthelens.gov.uk](mailto:thattoheathlibrary@sthelens.gov.uk)**

### Disability access

Ramp access into building

### Parking

Available on site

### Additional information

Free Wi-Fi, toilet, kitchen facilities, plasma screen



### WEBSITE:

**[www.sthelens.gov.uk](http://www.sthelens.gov.uk)**



# Chester Lane South Community Hub

Four Acre Ln  
St Helens  
WA9 4DE

## ROOM HIRE DETAILS

### Availability days and hours

Monday: 10am - 5pm

Tuesday: 10am - 5pm

Wednesday: CLOSED

Thursday: 10am - 5pm

Friday: 10am - 5pm

Saturday & Sunday: CLOSED

### Capacity

Seating 20

Tables and chairs 12

## CONTACT:

01744 676954

[chesterlanelibrary@sthelens.gov.uk](mailto:chesterlanelibrary@sthelens.gov.uk)

### Disability access

Ramp access and accessible toilet

### Parking

Carpark available on site

### Additional information

Free Wi-Fi and kitchen facilities



## WEBSITE:

[www.sthelens.gov.uk/communityhubs](http://www.sthelens.gov.uk/communityhubs)



# Rainhill Village Hall

Dane Court  
Rainhill  
Merseyside  
L35 4LU

## ROOM HIRE DETAILS

### Oak Hall

This large room has a fully equipped stage and access to the kitchen. Seating and tables can be set out in any arrangement for a maximum of 180 people. This space is ideal for plays, concerts, dances, exhibitions, children's parties and events.

### Teak Hall

This first floor room holds up to 80 people. There is access by stairs and a platform lift is available for those with mobility difficulties. Layout of tables, chairs and exhibition items is completely flexible. The room is suitable for children's parties, meetings and other activities. A small kitchen is available with tea/coffee making facilities.

### Willow, Elm, Pine, Maple Rooms

These smaller rooms are ideal for meetings and less formal gatherings of up to 30 people.

### Kitchen

A fully fitted kitchen is available adjacent to the Oak Hall.

N.B There are no bar facilities and a strictly no alcohol policy is in place.

## CONTACT:

**01744 676954**

**[chesterlanelibrary@sthelens.gov.uk](mailto:chesterlanelibrary@sthelens.gov.uk)**



## WEBSITE

**[www.villagehallrainhill.org](http://www.villagehallrainhill.org)**



# Chain Lane Community Centre

Hinckley Road  
St Helens  
WA11 9HT

## ROOM HIRE DETAILS

### Availability days and hours

Monday 3-6pm

Tuesday 9-4pm

Wednesday 3-4pm

Thursday 3-6pm

Friday 5-6pm

### Capacity

Seating arrangements  
80 chairs and 10 tables which can be  
arranged as necessary.

### CONTACT:

**01744 632377**

**cchainlane@gmail.com**



### Disability access

Fully accessible with disabled toilet

### Parking

Free parking available

### Additional information

Wi-Fi, Audio visual equipment, Accessible  
Toilet and Baby Change facilities, Kitchen,  
Garden / outdoor area

Reduced rates available for registered  
charities.



# Park Farm ACYP Community Centre

54 Kentmere Avenue  
Carr Mill  
St Helens  
WA11 7PG

## ROOM HIRE DETAILS

### Sports Hall (ground floor)

The large hall/gym space with sprung timber floor is perfect for sports and dancing activities as well as children's parties with plenty of space for all your guests. The hall also has a staged area for music and performance at your event.

### Duddon Room (ground floor)

A large multi-use space on our ground floor. Easy chairs for a homely, friendly feel or tables and chairs for a large group activity space. The adjoining fully equipped 5\* kitchen with serving counter is included in the hire of this room.

### Kitchen (ground floor)

Fully equipped 5\* rated kitchen could include use of our fridge, freezer, commercial oven, sink and serving counter. Please speak to a member of a staff for your requirements.

### Lowther Room (first floor)

A light and bright multi-purpose space on our first floor ideal for group activities and meetings. The adjoining multi-use room can also be booked with this room to provide extra space and facilities.

### Eden Room (first floor)

A small multi-use room on our first floor ideal for small group activities and meetings.

## CONTACT:

01744 754367

[contact@parkfarmcommunitycentre.co.uk](mailto:contact@parkfarmcommunitycentre.co.uk)



WEBSITE:

[parkfarmcommunitycentre.co.uk](http://parkfarmcommunitycentre.co.uk)



# Crownway Community Centre

Crown Street  
Earlestown  
Newton-le-Willows  
WA12 9DA

## ROOM HIRE DETAILS

### Availability days and hours

Contact for availability

### Capacity

Hall can accommodate 70 people seated

Large room 25 people

Small room 15 people

Office 2 people

### Seating arrangements

Chairs and tables available for all rooms

### Disability access

Yes centre is one storey building with an automatic door entrance and disabled toilet.

### Parking

Disabled parking in our car park and street parking next to centre.

### Additional information

In house catering, Wi-Fi, Audio visual equipment, Accessible Toilet and Baby Change facilities.



## CONTACT:

01925 222907

[office@crowwaycommunitycentre.co.uk](mailto:office@crowwaycommunitycentre.co.uk)

## WEBSITE:

[www.crownwaycommunitycentre.co.uk](http://www.crownwaycommunitycentre.co.uk)



# Wargrave Big Local

143 Alder Street  
Newton-le-Willows  
WA12 8HR

## ROOM HIRE DETAILS

### Availability days and hours

Contact for availability

### Capacity

Large room can seat up to 70 people  
Small room can seat up to 12 people  
1:1 room also available  
ICT Suite for 8 people

### Seating arrangements

Plenty chairs and tables available

### Disability access

Yes

### Parking

Large carpark

### Additional information

Wi-Fi, Accessible Toilet and Baby Change facilities, Kitchen, Garden / outdoor area



## CONTACT:

01925 271512

[wgbiglocal@outlook.com](mailto:wgbiglocal@outlook.com)

## WEBSITE:

[wargravecommunityhub.co.uk](http://wargravecommunityhub.co.uk)





# Newton-le-Willows

## Library

Crow Lane East  
Newton le Willows  
WA12 9TU

### ROOM HIRE DETAILS

#### Availability days and hours

Monday: 10am- 7pm  
Tuesday: 10am – 5pm  
Wednesday: 10am – 1pm  
Thursday: 10am – 5pm  
Friday: 10am – 5pm  
Saturday: 10am – 1pm  
Tel: 01744 677885

#### Capacity

Seating 25  
Tables and chairs 15

#### CONTACT:

**01744 677842**

**[newtonlewillowslibrary@sthelens.gov.uk](mailto:newtonlewillowslibrary@sthelens.gov.uk)**

#### Disability access

Ramp access into building

#### Additional information

Free Wi-Fi, Ramp access into building,  
accessible toilet, kitchen facilities



#### WEBSITE:

**[www.sthelens.gov.uk](http://www.sthelens.gov.uk)**



## PLEASE NOTE

All information in this brochure is correct to the best knowledge of Halton and St Helens VCA at the time of publication.

If you notice any inaccuracies, or if you would like your charity or community group to be featured in future editions, please contact:

**Mike Bagshaw**

**Community Connector - St Helens**

✉ [mbagshaw@haltonsthelensvca.org.uk](mailto:mbagshaw@haltonsthelensvca.org.uk)

# Halton and St Helens Voluntary Community Action

🌐 [www.haltonsthelensvca.org.uk](http://www.haltonsthelensvca.org.uk)

☎ 01744 457100

🏢 2nd Floor Beacon Building  
College Street  
St Helens  
WA10 1TF

