

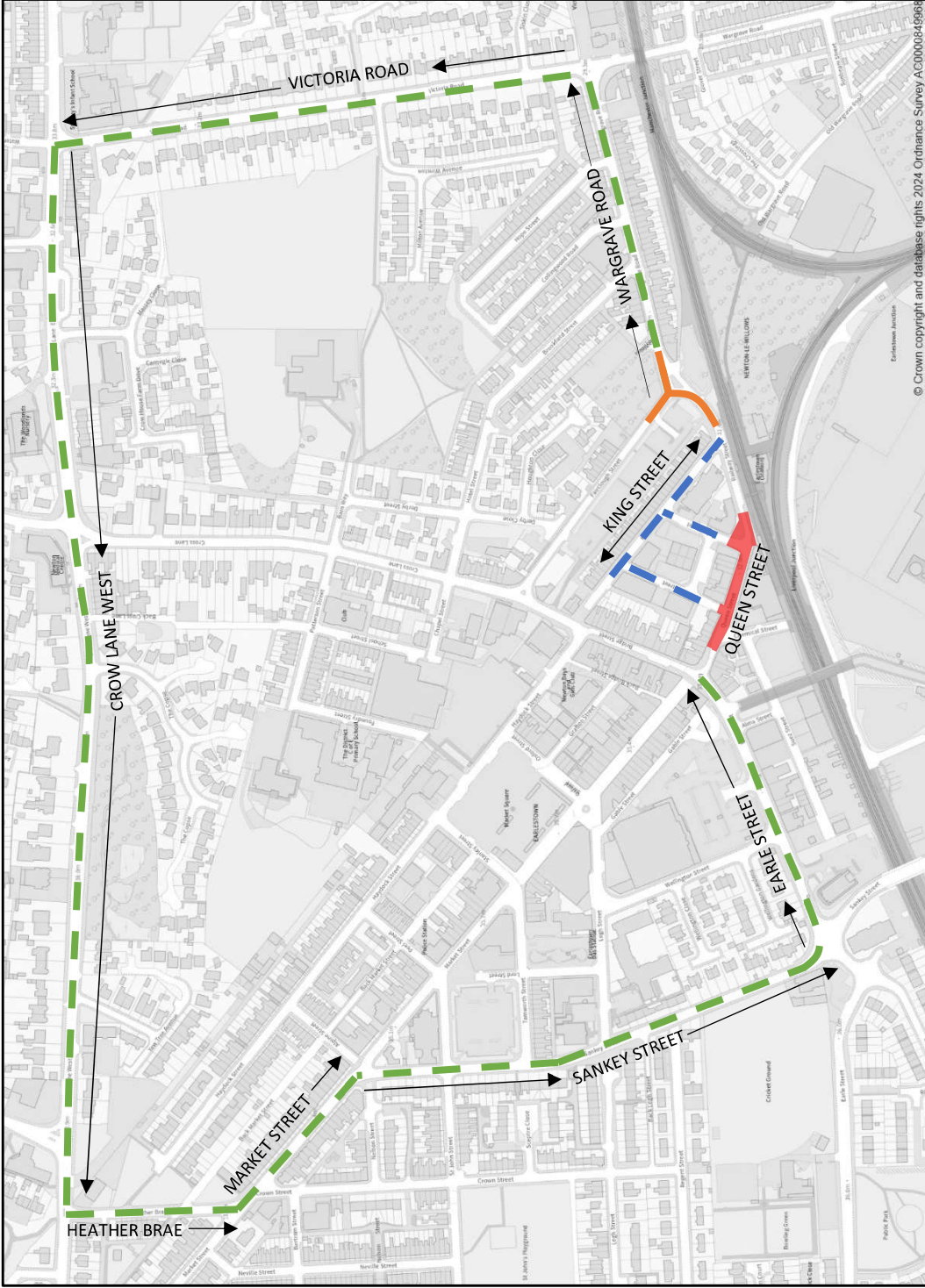
Key

- Temporary Road Closure Area
- - - Diversion Route for all traffic
- - - Access & Egress
- - - Residents & Businesses Only (No Through Route)
- 3-way Traffic Lights

Clear signage will be in place throughout the town centre to guide drivers along the approved diversion routes.

Cones, barriers & signs are there for a reason, to protect our workers from danger and to keep the public safe we urge drivers to pay close attention to safety when driving near roadworks.

For further information visit: <https://sthelens.gov.uk/article/7840/Highways-Improvement-Projects>



© Crown copyright and database rights 2024. Ordnance Survey AC0000849968



Eric Wright
Civil Engineering



ST HELENS
BOROUGH COUNCIL

