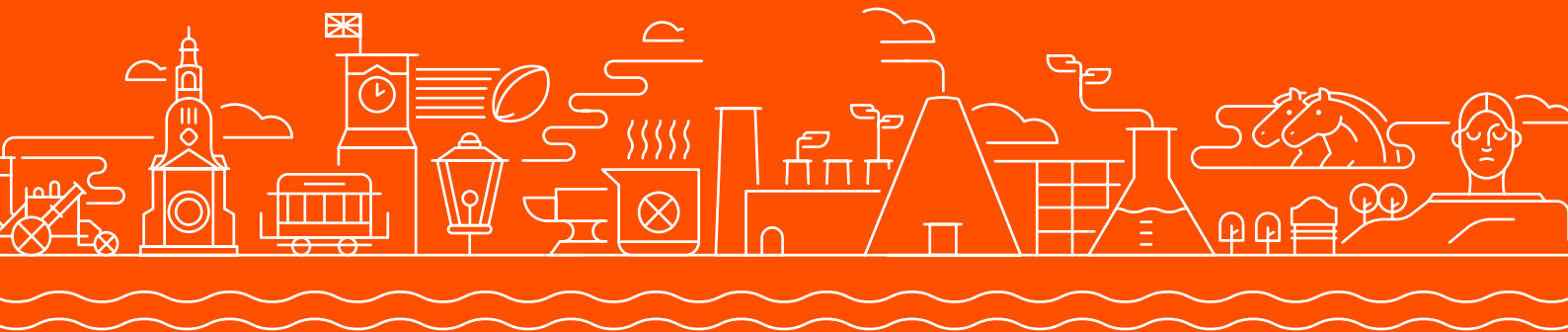




St. Helens
Council

Council Tax Information 2019/20





Contents

Building a Better Borough Together	1
1. The Council's Budget	4
2. Council Tax Charges	6
3. Merseyside Recycling and Waste Authority (MRWA)	7
4. Environment Agency	8
5. Liverpool City Region Combined Authority	10
6. The Police and Crime Commissioner for Merseyside	14
7. Merseyside Fire and Rescue Authority	18
8. Help and Support	20

Building a Better Borough Together

Your Council Tax helps pay for many vital services that keep our community running. It provides social care and support for the elderly and other vulnerable adults, it helps protect and safeguard our children and young people, and delivers services for all households.



The council has over 1,200 legal duties

Almost all your Council Tax helps pay for the services the council must legally provide. It may not be a service that you directly receive, but they are all services people within our community benefit from.



£90m cut (over 71%)

By 2020 St Helens Council will have lost £90 million, a 71% reduction in central government (core) funding. Nearly a decade of government funding reductions has seen our council cut to the core, meaning balancing all these demands is increasingly difficult.



Great uncertainty about future government funding places councils on a financial cliff edge from 2020

Against the backdrop of cuts, to protect local services we have been left with very little choice but to increase Council Tax by 2.99%. This is an average Band D increase of £3.50 per month or for those eligible for the Council Tax Reduction Scheme, 70p a month.

Your Council Tax remains the lowest on Merseyside and the 4th lowest of metropolitan councils in the North West.

St Helens faces a number of challenges

Demand for services now far outstrips available budgets. This means there are difficult choices to be made, **but we must prioritise those who most need our help**. Council Tax represents only 18% of our overall budget requirements.

72%

72% of our planned spend is on people's services and **supporting vulnerable children, young people and adults**



An ageing population with high numbers of people with complex needs requiring health and care services



We have **one of the highest rates of children in care in the North West**, and more and more children, young people and families are requiring social care support. Children's services are facing a national funding crisis



Our borough is the **36th most deprived in the country**. Poor health, relative poverty and low income in the population further increase demand for services and the support people need

To overcome our challenges...

We are promoting economic growth across St Helens to bring **greater opportunity and prosperity for the benefit of everyone**.

Growing the local economy will also provide the much-needed financial resources that allow us to support the future cost of delivering effective public services



Our approach is now beginning to make a real difference. There is growing confidence in St Helens as a place to invest and do business. St Helens recently recorded the **second largest growth in jobs in the North West** and planned investments are set to bring many more



For the first time in 2019/20 the Liverpool City Region (LCR) Combined Authority is levying a precept so it can work to promote further jobs, growth and investment across the area. **St Helens has already benefited greatly from involvement in the LCR with over £50 million of capital funding and there will be much more to follow**. The average household contribution of just over £1 per month is set to deliver additional funding over the next 5 years of nearly £3,000 per household

Throughout our budget setting process, we have taken time to listen to what you said and what matters most to you. You told us prioritising those who most need our help was what matters to you. **Over 2019/20 some of the important services your Council Tax will contribute to include:**



We will also seek to deliver on the following key priorities:

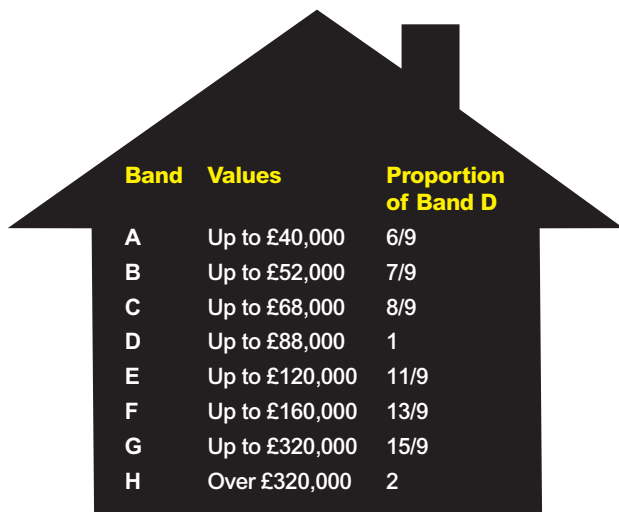
Investing significant additional resources to transform children's social care.

Further developing our award winning local care system 'St Helens Cares' to reduce the demand and cost of health and care services.

Progressing our ambitious plans for the redevelopment of the town centre and district centres.

Promoting balanced development and inclusive growth across the borough.

1. The Council's Budget



Band	Values	Proportion of Band D
A	Up to £40,000	6/9
B	Up to £52,000	7/9
C	Up to £68,000	8/9
D	Up to £88,000	1
E	Up to £120,000	11/9
F	Up to £160,000	13/9
G	Up to £320,000	15/9
H	Over £320,000	2

The Council Tax you pay depends on the valuation your property has been given by the Valuation Office Agency.

The amount payable is based on the market value of the property as of 1 April 1991.

Your Council Tax bill tells you which band applies to your home.

The amount of Council Tax charge for each band depends upon the tax set for band D, and is calculated using the proportions shown.

Adult Social Care Precept (ASC)

In 2015 the Government created the Adult Social Care Precept which allowed Councils who provide Social Care to Adults to increase their share of Council Tax by up to an extra 2%.

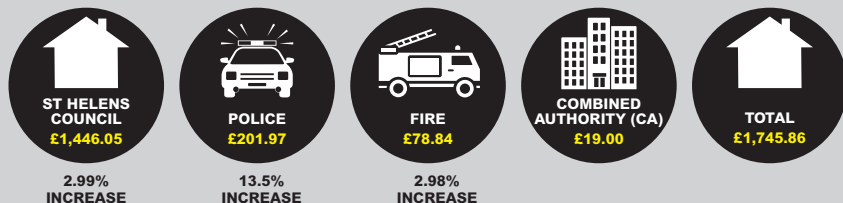
In 2016 they announced that for the 3 years from 2017/18 to 2019/20 Councils would be allowed to increase this by up to 3% in any given year, but no more than 6% in total over those years.

The income generated from this charge is ring-fenced, meaning it can only be used for Adult Social Care services.

	2018/19	2019/20	Increase
Amount met from Council Taxpayer	£70.994m	£74.207m	4.53%
Council Tax Base (Band D equivalents)	50,563	51,317	
Band D Council Tax	£1,404.07	£1,446.05	2.99%
Amount included above for ASC Precept	£101.86	£101.86	0.00%

If you live in a Parish that charges a precept, your Council Tax will be higher. Please see Section 2 for details.

The basic Council Tax for a Band D property has been set at:



Not all Council Tax collected pays for council services, it also supports Police, the Combined Authority and the Fire and Rescue service too.

Basic Council Tax Payable for 2019/20

Band	St Helens (£)	Police (£)	Fire (£)	CA (£)	Total (Non-Parish) (£)
A	964.03	134.65	52.56	12.67	1,163.91
B	1,124.70	157.09	61.32	14.78	1,357.89
C	1,285.37	179.53	70.08	16.89	1,551.87
D	1,446.05	201.97	78.84	19.00	1,745.86
E	1,767.39	246.85	96.36	23.22	2,133.82
F	2,088.73	291.73	113.88	27.44	2,521.78
G	2,410.08	336.62	131.40	31.67	2,909.77
H	2,892.10	403.94	157.68	38.00	3,491.72

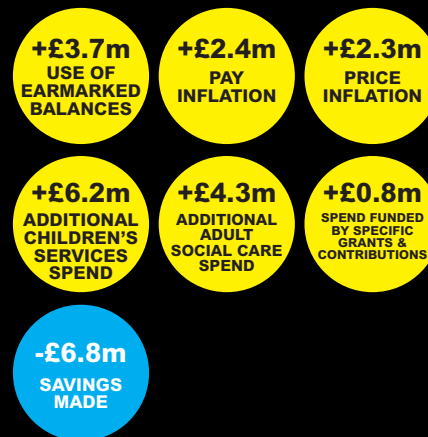
For 2019/20, the Government requires St Helens Council to hold a referendum with local residents if they propose to increase Council Tax by **3%** or more. Therefore, no referendum is required.

Revenue Spending 2019/20

Our total 2019/20 budget is **£415.6m** (Gross Revenue Expenditure).

In 2018/19, the equivalent amount was **£402.7m**.

The change in Gross Revenue Expenditure is due to a number of cost pressures, additional spend funded by non-Council Tax sources and savings made for 2019/20.



2. Council Tax Charges

The table below shows the amount of Council Tax you will pay dependent on which area of the Borough you live in.

Council Tax Charges 2019/20								
Band	A	B	C	D	E	F	G	H
	£	£	£	£	£	£	£	£
Bold	1,171.82	1,367.12	1,562.42	1,757.73	2,148.32	2,538.92	2,929.55	3,515.46
Rainford	1,181.24	1,378.11	1,574.98	1,771.86	2,165.59	2,559.33	2,953.10	3,543.72
Eccleston	1,173.87	1,369.51	1,565.15	1,760.80	2,152.08	2,543.36	2,934.67	3,521.60
Windle	1,172.21	1,367.57	1,562.94	1,758.31	2,149.04	2,539.76	2,930.52	3,516.62
Rainhill	1,176.07	1,372.07	1,568.08	1,764.10	2,156.11	2,548.12	2,940.17	3,528.20
Billinge	1,179.58	1,376.17	1,572.76	1,769.36	2,162.54	2,555.72	2,948.94	3,538.72
Seneley Green	1,187.13	1,384.98	1,582.83	1,780.70	2,176.40	2,572.10	2,967.83	3,561.40
All other parts of the council area	1,163.91	1,357.89	1,551.87	1,745.86	2,133.82	2,521.78	2,909.77	3,491.72

3. Merseyside Recycling and Waste Authority (MRWA)

We are the public body responsible for dealing with household waste and recycling once it's been collected from your home.

Using the latest technologies we aim to make sure as much waste as possible is sustainably managed. Our Energy from Waste facility in Wilton diverts over 92% of Merseyside's non-recycled waste from landfill - and in the process saves more

than £100m in current landfill disposal costs over the life of its contract.

We work hard to persuade Merseyside's householders to use less in the first place and, through our 14 Household Waste Recycling Centres and District Council kerbside collections, to recycle as much as they can. Together with our Council partners we're making steady progress. Last year, 38.9% of Merseyside's

household waste was re-used, recycled and composted. You can read more about our Sustainability, Accountability and Deliverability on:
www.merseysidewda.gov.uk

The Levy for St Helens Council for 2019-20 will be £8,583,298.

Financial Summary

A comparison of Expenditure and Income for 2018-19 and 2019-20 is as follows.

	2018-19	2019-20
	£M	£M
Gross expenditure	72.761	76.408
Landfill Tax	0	0
Total Net Expenditure	72.761	76.408
Contribution to Reserves	0	0
Total Requirement	72.761	76.408
Use of Reserves	-1.267	-1.411
Levy	71.494	74.998
Levy per head	£51.14	£52.93



For more information contact:
 Merseyside Recycling and Waste Authority
 7th Floor
 No.1 Mann Island
 Liverpool
 L3 1BP
 Tel: **0151 255 1444**
 E-mail: enquiries@merseysidewda.gov.uk
 Web: www.merseysidewda.gov.uk
www.recycleformerseysideandhalton.com

4. Environment Agency

The Environment Agency is a levying body for its Flood and Coastal Erosion Risk Management Functions under the Flood and Water Management Act 2010 and the Environment Agency (Levies) (England and Wales) Regulations 2011.

The Environment Agency has powers in respect of flood and coastal erosion risk management for 6500 kilometres of main river and along tidal and sea defences in the area of the North West Regional Flood and Coastal Committee. Money is spent on the construction of new flood

defence schemes, the maintenance of the river system and existing flood defences together with the operation of a flood warning system and management of the risk of coastal erosion. The financial details are:

North West Regional Flood and Coastal Committee

	2018/2019 '000s	2019/2020 '000s
Gross expenditure	£59,769	£83,428
Levies Raised	£3,938	£4,017
Total Council Tax Base	2,110	2,145

The majority of funding for flood defence comes directly from the Department for the Environment, Food and Rural Affairs (Defra). However, under the new Partnership Funding rule not all schemes will attract full central funding. To provide local funding for local priorities and contributions for partnership funding the Regional Flood and Coastal Committees

recommend through the Environment Agency a local levy.

A change in the gross budgeted expenditure between years reflects the programme of works for both capital and revenue needed by the Regional Flood and Coastal Committee to which you contribute. The total Local Levy raised by this committee has increased by 2.0%

The total Local Levy raised has increased from £3,937,888 in 2018/2019 to £4,016,646 for 2019/2020.



5. Liverpool City Region - Metro Mayor & Combined Authority



Steve Rotheram

Liverpool City Region
Metro Mayor



METROMAYOR
LIVERPOOL CITY REGION

Office of the Metro Mayor of the Liverpool City Region

The Metro Mayor of the Liverpool City Region works with the Liverpool City Region Combined Authority (LCRCA) to ensure we all share in the benefits of a successful economy with no-one left behind.

He's accountable to, and represents the people of, all six boroughs in Liverpool City Region: Halton, Knowsley, Liverpool, Sefton, St Helens and Wirral.

The Metro Mayor steers the work of the Combined Authority, leading on issues such as the economy, transport, housing and skills.

Responsible for shaping the future of our region, the Metro Mayor represents Liverpool City Region people, enabling them to speak with one voice to make the case for a fairer deal and better quality of life, at the heart of government and on the world stage.

Liverpool City Region Combined Authority

The LCRCA consists of the six councils in the Liverpool City Region and the Metro Mayor, and works with other local services, businesses, trade unions, communities and other partners to improve the city region.

The LCRCA gives local people more control over issues affecting our lives and is delivering an investment programme worth over £1billion.

The Metro Mayor and the LCRCA have already delivered real benefits for the city region, including:

- 9,000 jobs and 5,500 apprenticeships;
- £189m in extra government funding for transport, homelessness and skills;
- £6m to support local high streets;
- 800 families into employment through Households into Work;
- £1 fast tag Mersey Tunnels toll;
- Half price bus travel for apprentices;

- £8.3m of new cycling and walking routes; and,
- New state of the art trains for the Merseyrail network. St Helens has received tens of millions of pounds of funding, which without the Liverpool City Region's devolution deal it would not otherwise have had, supporting projects including the Clickworks Digital Centre, the Parkside link road project, and the Newton-le-Willows interchange scheme.

To facilitate continued investment, progression with the City Region devolution aims and objectives and enable LCRCA to continue to deliver projects for the city region, such as ultra-fast digital connectivity, a Mayoral Transport Plan, and an apprenticeship portal, a Mayoral Precept will be levied for the financial year 2019/20. This precept is raised in accordance with the powers and functions conferred upon the Metro Mayor under the Combined

Authorities (Finance) Order 2017 and will enable LCRCA to ensure its long term financial sustainability. In council tax terms, the new precept equates to a charge of £12.67 per band A property and £19.00 per band D property. As 2019/20 is the first year in which a Mayoral Precept has been levied, no comparator information is available for 2018/19.

2018/19 £'000		2019/20 £'000
149,285	Gross Expenditure	159,935
(50,470)	Income and Specific Grants	(42,945)
(95,400)	Income from Levy	(95,400)
(3,415)	Contributions from Reserves	(13,915)
-	Council Tax Requirement	7,675
N/A	Tax Base	405,624
N/A	Band D Equivalent	£19.00

For more information, visit:
www.liverpoolcityregion-ca.gov.uk

Transport Funding

The LCRCA's transport responsibilities are funded through transport levies across each of the six councils.

This funds concessionary travel, subsidised bus services, the Mersey Ferries and a range of other services.

The transport levy 2019/20 for each of the Merseyside Councils within the LCRCA is:

	Transport Levy 2018/19 £000	Transport Levy 2019/20 £000
Knowsley	10,032	10,006
Liverpool	32,869	33,095
St Helens	12,107	12,073
Sefton	18,605	18,490
Wirral	21,786	21,736
Total	95,400	95,400

For historical and legal reasons Halton Council currently provide transport activities directly within the boundaries of the borough of Halton.

This is funded through a differential transport levy collected by Halton on behalf of the LCRCA which will be £3.1m for 2019/20.



Mayor Steve Rotherham

Metro Mayor, Liverpool City Region



Mr John Fogarty, B.A. Hons, C.P.F.A.

Director of Corporate Services: Liverpool City Region Mayoral Combined Authority



6. The Police and Crime Commissioner for Merseyside

I have a statutory duty to ensure an efficient and effective police service is delivered by the Chief Constable on behalf of the public. Similarly I have a responsibility to produce an annual budget, including setting the Council Tax precept requirement for the police service on Merseyside. The Council Tax precept requirement provides the balance of funding not covered by government grant and is raised entirely and only for the police service.

The Government have given Merseyside Police more grant funding in 2019/20, but this is only enough to cover the costs associated with an unexpected national increase in Police Officer pensions employer contributions. Unfortunately, the Government have not provided any new money to cover the day to day running costs of the police service. They have recognised the need for additional resources for policing but again made it clear that local people should be asked to contribute more through the precept.

I therefore had no choice other than to ask the public to support an increase in the police precept. I am pleased that over 74% of those who responded to my budget consultation did so.

Consequently, with the help of the Chief Constable I have been able to set a balanced budget for 2019/20. In doing so I have raised the precept by the maximum allowable, resulting in an additional £9.9m of precept income. In Council Tax terms the new precept is £134.65 per property per year at Band A (the majority of taxpayers on Merseyside) and £201.97 at Band D, an increase of £16.00 and £24.00 respectively on the 2018/19 levels. Maximising the precept has not only helped me balance the budget, but it has also provided an opportunity for the Chief Constable to recruit an additional 40 Police Officers and provide some stability to the Force over the next couple of years.

As part of the budget I have also allowed the Chief Constable to reinvest savings

from the Community First Programme approved during 2018/19 to recruit an additional 40 Police Officers and 14 Police Staff in 2019/20, as well as save 40 Police Officer posts that were due to be lost. The Chief Constable intends to reinvest in priority areas to enhance the Force's operational capability.

Despite balancing the budget in 2019/20 there still remains a very significant financial and policing challenge for the police service in the years ahead. Consequently, I will continue to work closely with the Chief Constable to review activity across all areas of police business, ensuring Merseyside has the most resilient and effective force possible with the budget available to us.

Rt Hon Jane Kennedy
Police and Crime Commissioner for Merseyside



Police and Crime Commissioner Budget

2018/19		2019/20	
£m		£m	
320.544	GROSS EXPENDITURE	336.448	
(2.655)	Income	(2.600)	
(4.637)	Specific Government Grants	(4.153)	
313.252	NET OPERATING EXPENDITURE	329.695	
(0.150)	Net Contribution to/(from) Reserves	1.660	
313.102	NET BUDGET REQUIREMENT	331.355	
(120.756)	Police General Grant	(123.383)	37.2%
(111.263)	DCLG Formula Funding	(113.509)	34.3%
0.000	Pensions Grant	(3.570)	1.1%
(14.103)	Local Council Tax Support Grant	(14.103)	4.2%
(1.538)	Legacy Council Tax Freeze Grant	(1.538)	0.5%
(0.479)	Collection Fund Surplus	(0.387)	0.1%
64.963	COUNCIL TAX REQUIREMENT	74.865	22.6%
365,022	Tax base	370,674	
£177.97	Band D Equivalent	£201.97	
£12.00	Increase in Band D Equivalent	£24.00	13.5%

The Police and Crime Commissioner for Merseyside

Why has the Gross Expenditure Changed?	£m
GROSS EXPENDITURE 2018/19	320.544
Net Committed Growth/(Savings)	(7.347)
Increase in Police Officer Pensions Employer Contributions	8.138
Recruitment of 40 Additional Police Officers (Precept)	1.823
Recruitment of 80 Additional Police Officers and 14 Police Staff (Reinvestment)	4.177
Removal of Previous Years One-off Commitments	(1.785)
One-off Commitments for 2019/20	1.787
None Achievement of Savings in 2018/19	0.940
Allowance for Pay and Price Inflation	6.511
Net Contribution to Earmarked Reserves	1.660
GROSS EXPENDITURE 2019/20	336.448

Why has the Council Tax Requirement Changed?	£m
Council Tax Requirement 2018/19	64.963
Increase in Tax base	1.006
Increase in Band D Equivalent	8.896
Council Tax Requirement 2018/19	74.865



7. Merseyside Fire and Rescue Authority

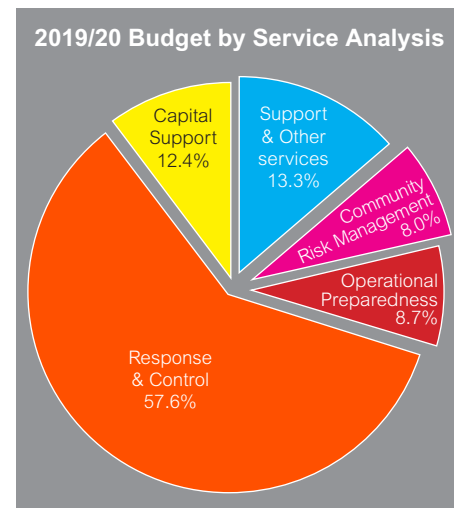
Historically the Authority has relied upon Government grants to fund a significant proportion of its revenue budget (over 63% in 2010/11). In 2010 the Government commenced its austerity plan to reduce national debt and manage the crisis in public finances. The plan resulted in significant reductions in Government grants paid to fire and rescue authorities up to and including 2019/20. Compared to 2010/11 the Authority's 2019/20 Government grant support has been cut by £15.5m or nearly 50% in real terms.

The Authority has had to make difficult decisions and approve saving options that maintained a balance budget. The Authority's priority remains to minimise the impact of grant reductions on frontline services by cutting management, technical and support costs in the first instance. Unfortunately the Authority was left with no alternative but to find savings from its operational response services that have resulted in a reduction in firefighters, appliances and fire stations.

The Authority has to deal effectively and efficiently with risk, demand and vulnerability associated with fire and

response related threats. Whilst demand has fallen over recent years the risk has changed as a result of heightened terrorist threat, increasing environmental events, significant building fires and increased legislative demands following the Grenfell Tower fire. In order to meet those demands the Authority has chosen to increase the council tax precept by just under 3%, the maximum allowed without recourse to a referendum. This increase in funding combined with plans to maximise debt servicing will allow the Chief Fire Officer to make good his commitment to reinvest in frontline services. Notably increasing the number of available fire engines from 26 to 30 and an increase in the number of firefighters from 620 to 642. The Authority will consult the public on its proposals over the next few months and has built this commitment into its five year medium term plan for 2019/20 - 2023/24.

Approximately 75% of the budget remains committed to delivering operational response and preventative services as these functions have been recognised as priority areas by the public following extensive consultation.



An increase in council tax by just below 3% (the maximum allowable without holding a public referendum), will mean the Band D Council Tax is therefore now £78.84. Most council taxpayers in Merseyside will pay Band A Council Tax of £52.56 about 14p per day towards their Fire and Rescue Service.

The Authority has set a budget of £60.282m for 2019/20, £0.6m higher than that in 2018/19. The main changes between this year's budget and last year's are:

Reductions in support service, management & other costs	(£1.7m)
Increase in specific grants	(£0.4m)
Forecast inflation and cost increases	£2.7m
	£0.6m

The Authority has issued a precept on the five Merseyside District Councils of £29.224 million, St Helens contribution to expenditure financed by precept is £4.046 million, which represents 14% of the total precept.

Summary of Revenue Budget & Council Tax Requirement		
2018-19		2019-20
£'000		£'000
75,269	Gross Expenditure	84,760
-4,802	Net Contribution from Reserves	-4,277
-10,766	Income & specific Grants for services	-20,201
59,701	Budget Requirement	60,282
-336	Collection Fund & Business Rates Surplus	-245
-31,419	Government Grant & Business Rate Funding	-30,813
27,946	Council Tax Requirement	29,224
365,022	Tax-base	370,674
£76.56	Band D Equivalent	£78.84

Contact Us

The Authority values the opinions of the people it serves. If you wish to comment about the services of the Authority please contact Fire and Rescue Service Headquarters on 0151 296 4000.

Ian Cummins, CIPFA,
Treasurer
Merseyside Fire and Rescue Authority
Fire and Rescue Service Headquarters,
Bridle Road, Bootle
Liverpool, L30 4YD
iancummins@merseyfire.gov.uk

Help keep council costs down



Manage your Council Tax and other payments online

Paying by Direct Debit is the easiest, quickest and cheapest way to pay and by signing up for e-billing you are helping the council cut down on costly paperwork. You can sign up here it is quick, safe and secure. www.sthelens.gov.uk/council-tax/paying-your-council-tax/



Contact the council online

Online transactions cost us a fraction of what it does to speak to us. You can download our free mobile app to report problems to us when you are on the move. You can also use the self-service section of our website to book services, give us feedback or report any problems.



Recycle more

Recycling helps protect our environment. It also helps us reduce costs as it is nearly three times more expensive to dispose of your waste than it is to collect it.

Ways we can help



Energy Savings

Our Affordable Warmth team can help reduce your energy usage and save on your gas and electricity bills. Find out more at: www.sthelens.gov.uk/housing/energy-efficiency/



Work and Employment

If you are currently unemployed and would like advice or support about getting back into work call the 'Ways to Work' team on: **01744 676131**, or email: waystowork@sthelens.gov.uk



Money Advice

If you are having problems paying your Council Tax contact us immediately. Please visit: www.sthelens.gov.uk/council-tax/problems-paying-your-council-tax/
Or call us on: **01744 675255**



St.Helens Council

Contact Centre

Wesley House
Corporation Street
St Helens
WA10 1HF

Tel: 01744 676789

Minicom: 01744 671671

→ www.sthelens.gov.uk/contactus

Please contact us to request translation of council information into Braille, audio tape or a foreign language.