


Assessed Junction 



Office 51-55 Tithebarn Street Liverpool L2 2SB
 Telephone 0151 726 2000
 Email Liverpool@curtins.com
 Web https://www.curtins.com/

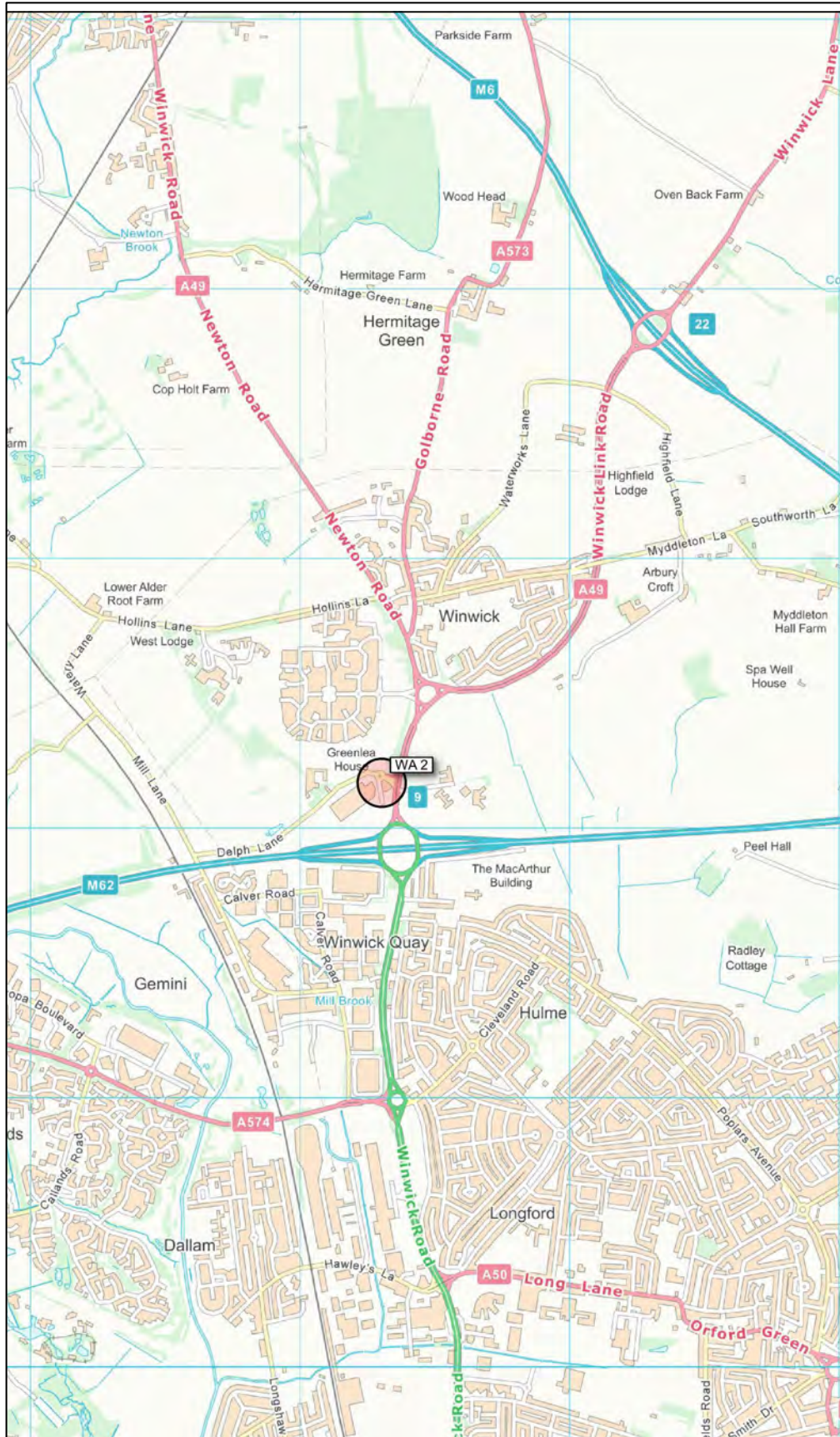
Project:	PARKSIDE INQUIRY		Status:	PRELIMINARY	
Drg Title:	JUNCTION LOCATION PLAN WA 1		Drawn By:	HD	Checked By: AV
			Designed By:	HD	Date: 04/11/20
			Scale:	NTS	
Project No:	Originator:	Volume:	Level:	Type:	Role: Category / Number: Rev:

076570 - CUR - 00 - XX - DR - TP - 06017 - P01

GENERAL NOTES:

Rev: Description: Date: By: Chkd:

Civils & Structures • Transport Planning • Environmental • Infrastructure • Geotechnical • Conservation & Heritage • Principal Designer
 Birmingham • Bristol • Cambridge • Cardiff • Douglas • Dublin • Edinburgh • Glasgow • Kendal • Leeds • Liverpool • London • Manchester • Nottingham



Assessed Junction 



Office 51-55 Tithebarn Street Liverpool L2 2SB
 Telephone 0151 726 2000
 Email Liverpool@curtins.com
 Web https://www.curtins.com/

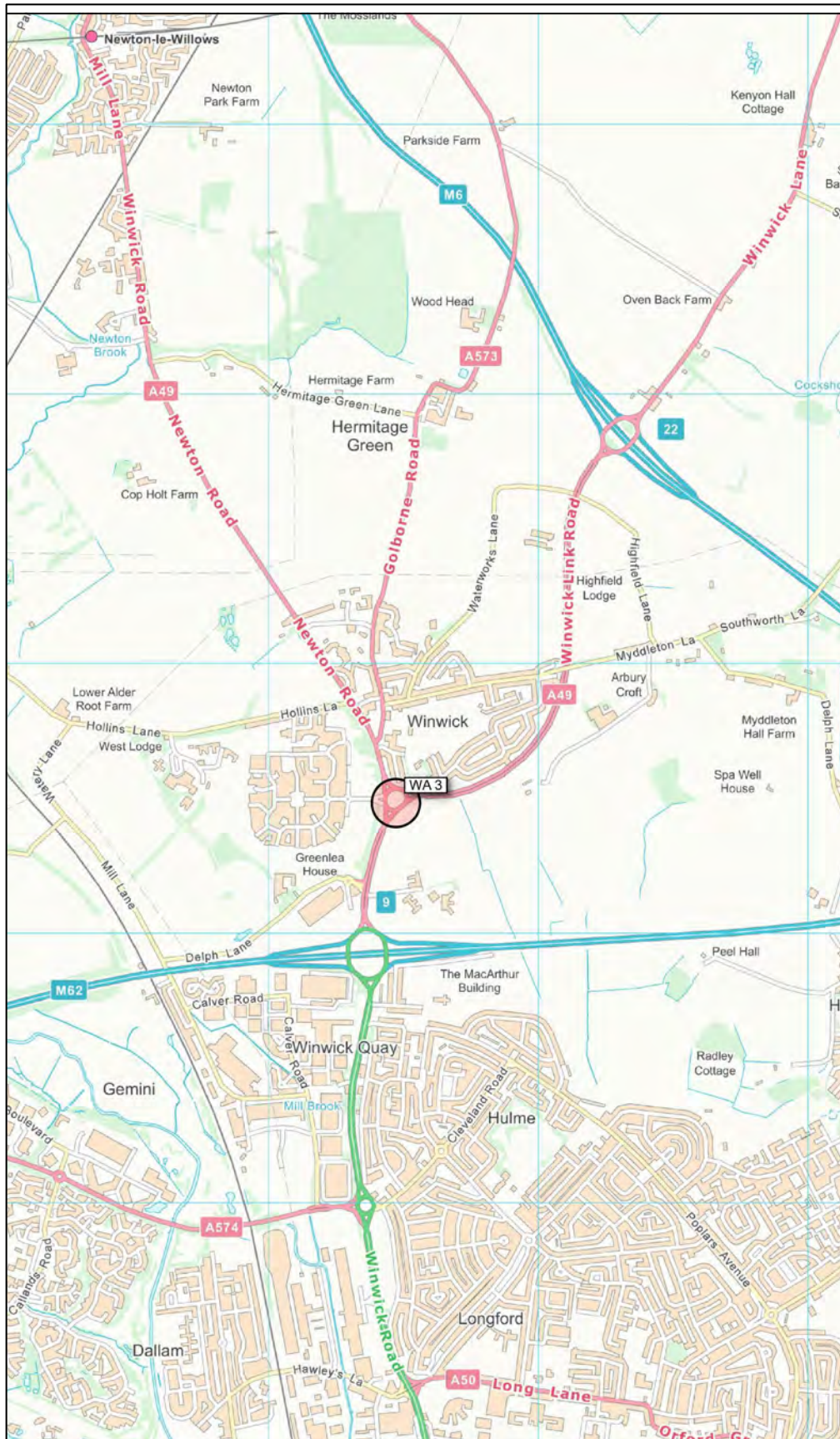
Project:	PARKSIDE INQUIRY		Status:	PRELIMINARY	
Drg Title:	JUNCTION LOCATION PLAN WA 2		Drawn By:	HD	Checked By: AV
			Designed By:	HD	Date: 04/11/20
			Scale:	NTS	
Project No:	Originator:	Volume:	Level:	Type:	Role: Category / Number: Rev:

076570 - CUR - 00 - XX - DR - TP - 06018 - P01

GENERAL NOTES:

Rev:	Description:	Date:	By:	Chkd:
------	--------------	-------	-----	-------

Civils & Structures • Transport Planning • Environmental • Infrastructure • Geotechnical • Conservation & Heritage • Principal Designer
 Birmingham • Bristol • Cambridge • Cardiff • Douglas • Dublin • Edinburgh • Glasgow • Kendal • Leeds • Liverpool • London • Manchester • Nottingham



Assessed Junction



Office 51-55 Tithebarn Street Liverpool L2 2SB
 Telephone 0151 726 2000
 Email Liverpool@curtins.com
 Web https://www.curtins.com/

Project: PARKSIDE INQUIRY

Status: PRELIMINARY

Drg Title: JUNCTION LOCATION PLAN
 WA 3

Drawn By: HD Checked By: AV

Designed By: HD Date: 04/11/20

Scale: NTS

Project No: Originator: Volume: Level: Type: Role: Category / Number: Rev:

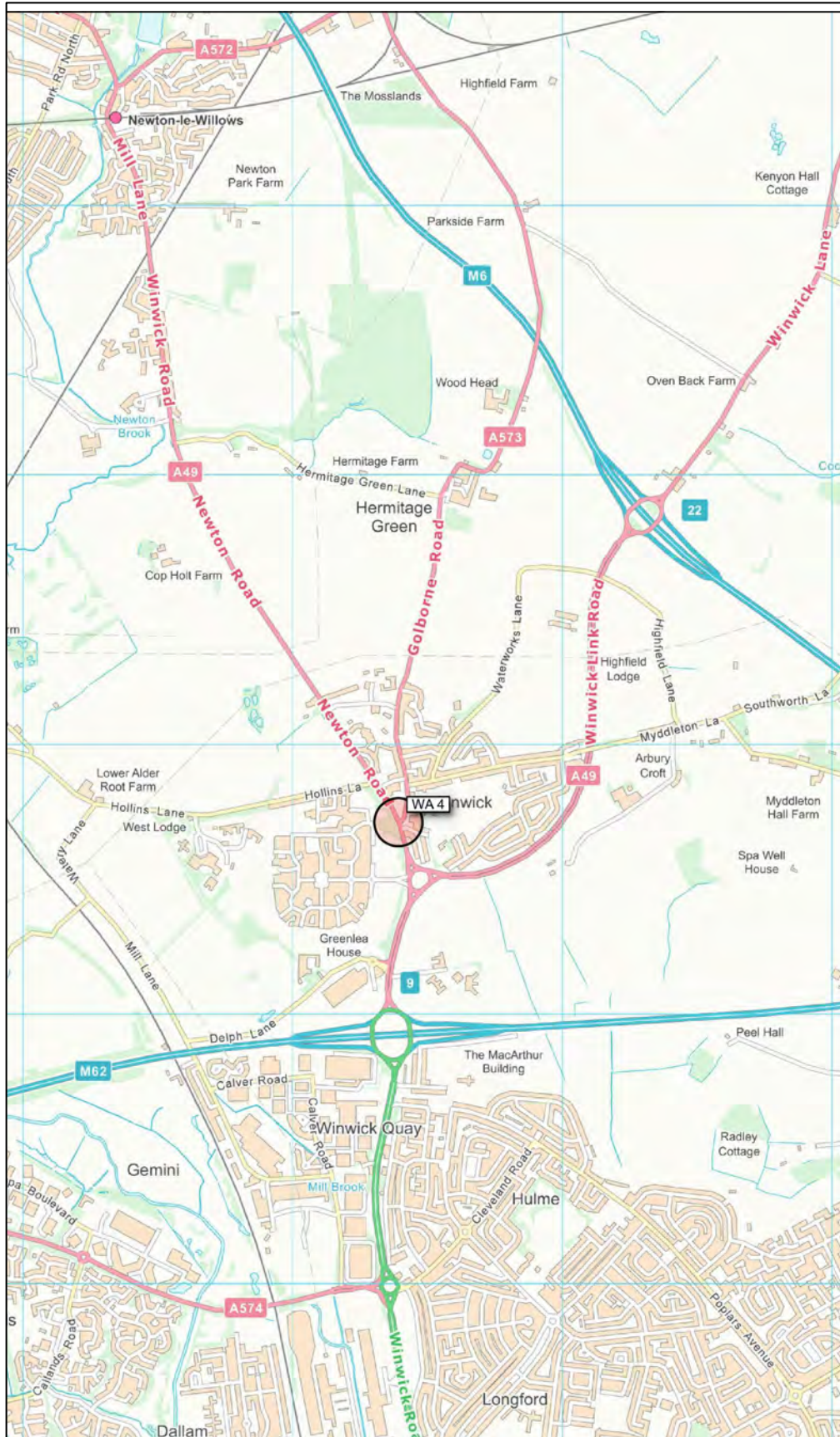
076570 - CUR - 00 - XX - DR - TP - 06019 - P01

GENERAL NOTES:

Rev:	Description:	Date:	By:	Chkd:
------	--------------	-------	-----	-------

Civils & Structures • Transport Planning • Environmental • Infrastructure • Geotechnical • Conservation & Heritage • Principal Designer
 Birmingham • Bristol • Cambridge • Cardiff • Douglas • Dublin • Edinburgh • Glasgow • Kendal • Leeds • Liverpool • London • Manchester • Nottingham

\\mfs02\Projects\076570 - Parkside Inquiry\04-Production\4A-Models-Drawings\TP\CAD\06\WA Junctions



Assessed Junction 



Office 51-55 Tithebarn Street Liverpool L2 2SB
 Telephone 0151 726 2000
 Email Liverpool@curtins.com
 Web https://www.curtins.com/

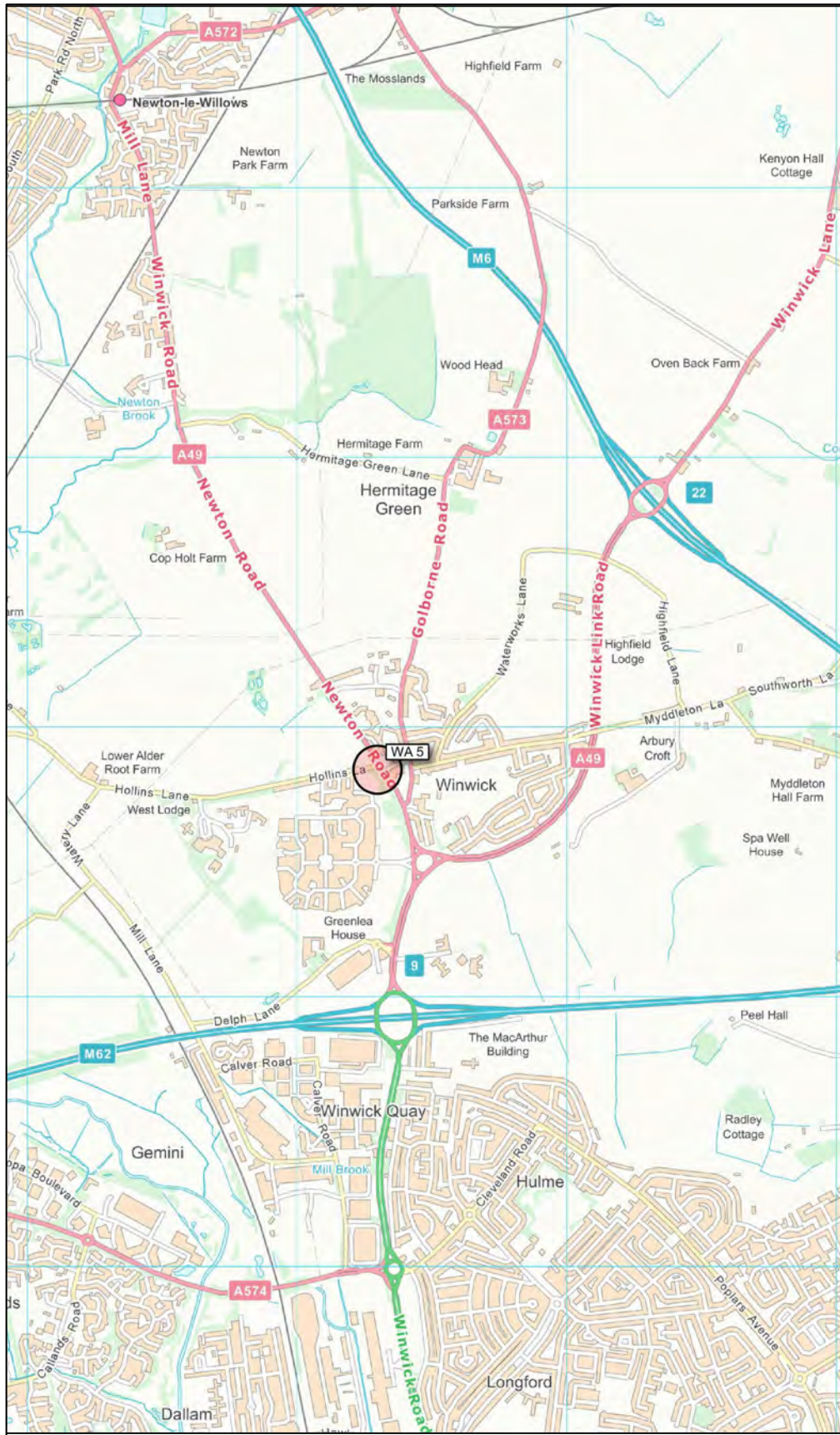
Project:	PARKSIDE INQUIRY		Status:	PRELIMINARY	
Drg Title:	JUNCTION LOCATION PLAN WA 4		Drawn By:	HD	Checked By: AV
			Designed By:	HD	Date: 04/11/20
			Scale:	NTS	
Project No:	Originator:	Volume:	Level:	Type:	Role: Category / Number: Rev:

076570 - CUR - 00 - XX - DR - TP - 06020 - P01

GENERAL NOTES:

Rev: Description: Date: By: Chkd:

Civils & Structures • Transport Planning • Environmental • Infrastructure • Geotechnical • Conservation & Heritage • Principal Designer
 Birmingham • Bristol • Cambridge • Cardiff • Douglas • Dublin • Edinburgh • Glasgow • Kendal • Leeds • Liverpool • London • Manchester • Nottingham



Assessed Junction 



Office 51-55 Tithebarn Street Liverpool L2 2SB
 Telephone 0151 726 2000
 Email Liverpool@curtins.com
 Web https://www.curtins.com/

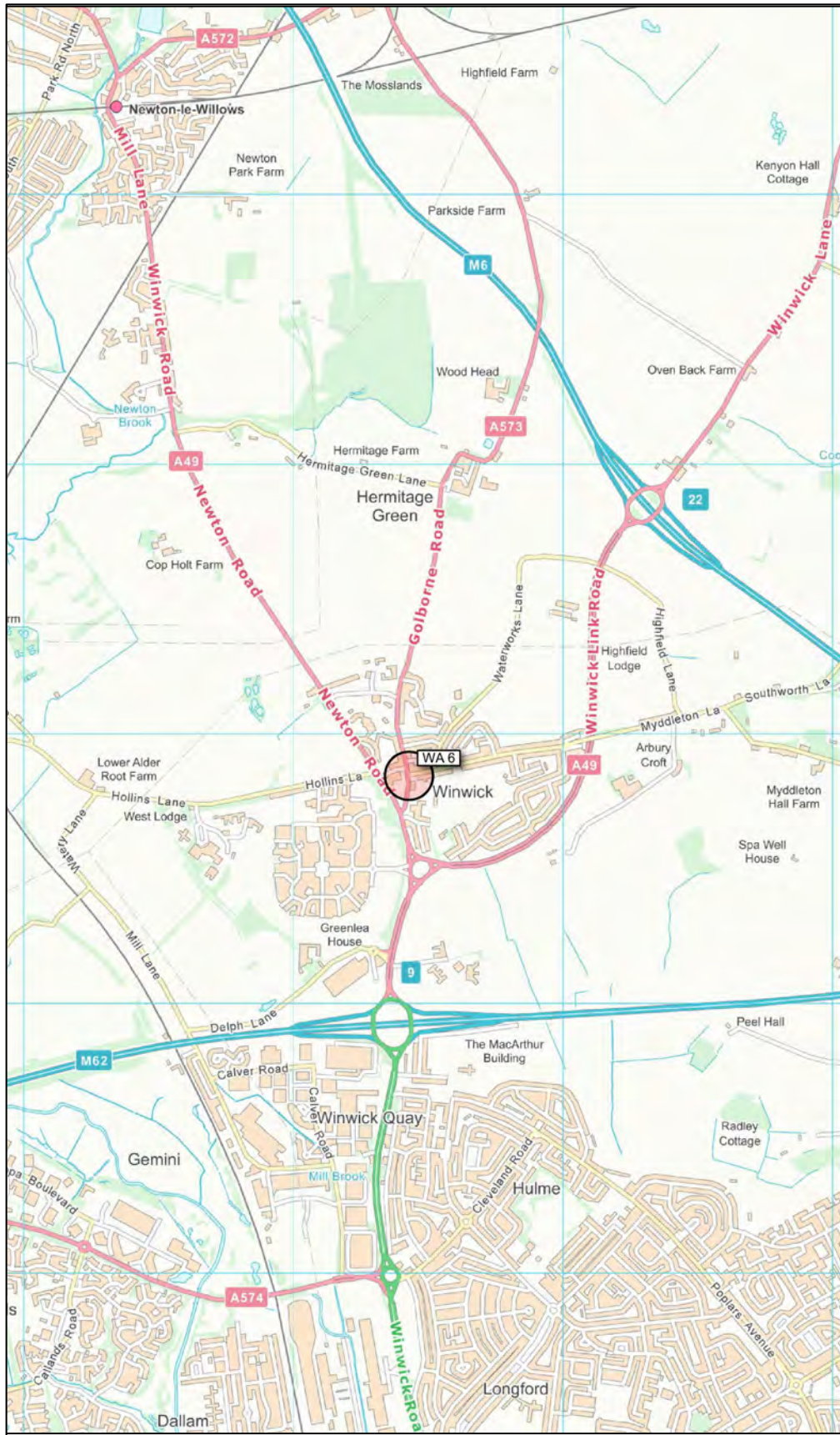
Civils & Structures • Transport Planning • Environmental • Infrastructure • Geotechnical • Conservation & Heritage • Principal Designer
 Birmingham • Bristol • Cambridge • Cardiff • Douglas • Dublin • Edinburgh • Glasgow • Kendal • Leeds • Liverpool • London • Manchester • Nottingham

Project:	PARKSIDE INQUIRY		Status:	PRELIMINARY	
Drg Title:	JUNCTION LOCATION PLAN WA 5		Drawn By:	HD	Checked By: AV
			Designed By:	HD	Date: 04/11/20
			Scale:	NTS	
Project No:	Originator:	Volume:	Level:	Type:	Role: Category / Number: Rev:

076570 - CUR - 00 - XX - DR - TP - 06021 - P01

GENERAL NOTES:

Rev:	Description:	Date:	By:	Chkd:
------	--------------	-------	-----	-------



GOLBORNE ROAD/ MYDDLETON LANE



GOLBORNE ROAD NORTH



GOLBORNE ROAD SOUTH



MYDDLETON ROAD

Assessed Junction



Office 51-55 Tithebarn Street Liverpool L2 2SB
 Telephone 0151 726 2000
 Email Liverpool@curtins.com
 Web https://www.curtins.com/

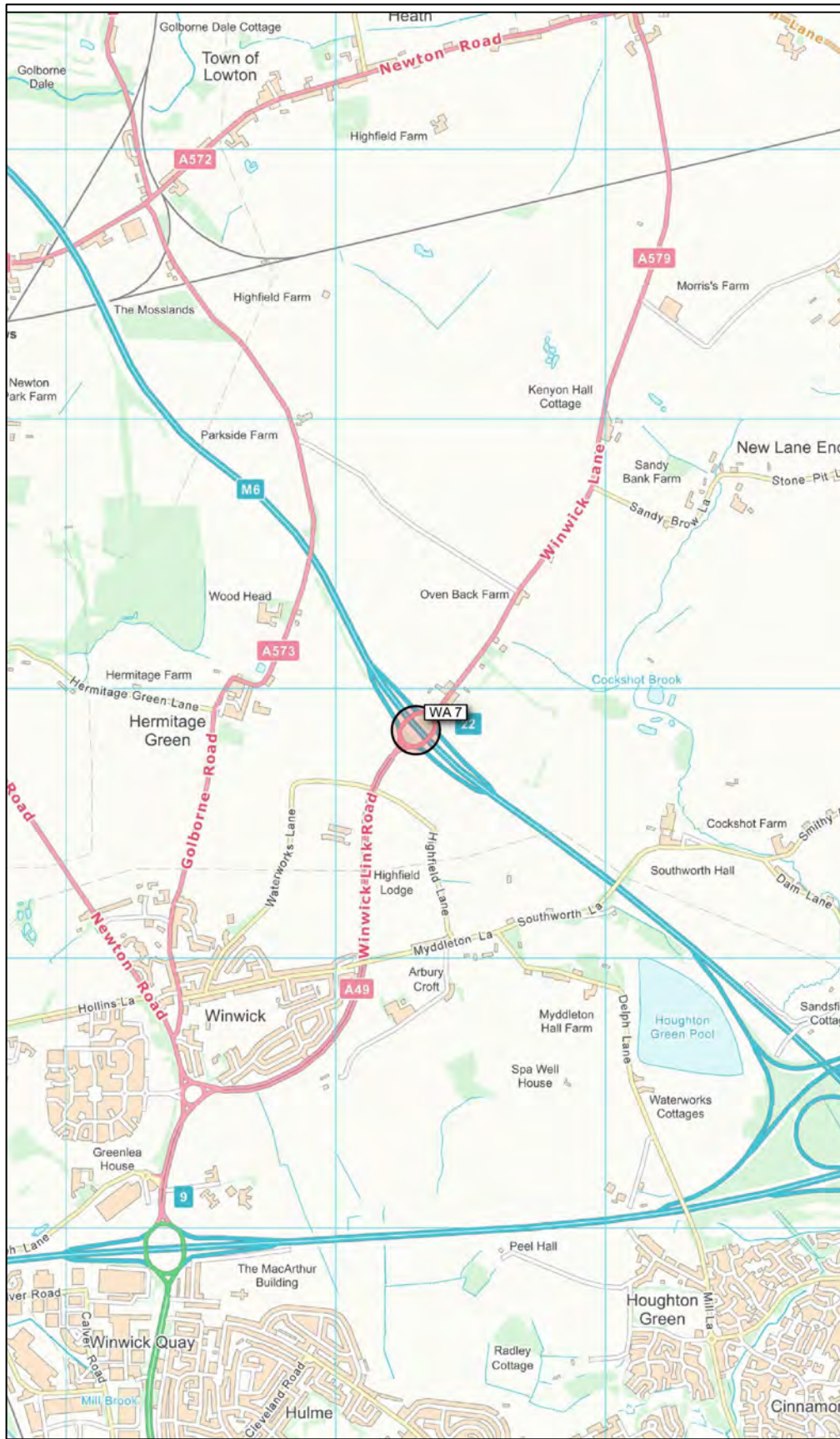
Project:	PARKSIDE INQUIRY		Status:	PRELIMINARY	
Drg Title:	JUNCTION LOCATION PLAN WA 6		Drawn By:	HD	Checked By: AV
			Designed By:	HD	Date: 04/11/20
			Scale:	NTS	
Project No:	Originator:	Volume:	Level:	Type:	Role: Category / Number: Rev:


076570 - CUR - 00 - XX - DR - TP - 06022 - P01

GENERAL NOTES:

Rev:	Description:	Date:	By:	Chkd:
------	--------------	-------	-----	-------

Civils & Structures • Transport Planning • Environmental • Infrastructure • Geotechnical • Conservation & Heritage • Principal Designer
 Birmingham • Bristol • Cambridge • Cardiff • Douglas • Dublin • Edinburgh • Glasgow • Kendal • Leeds • Liverpool • London • Manchester • Nottingham



Assessed Junction 

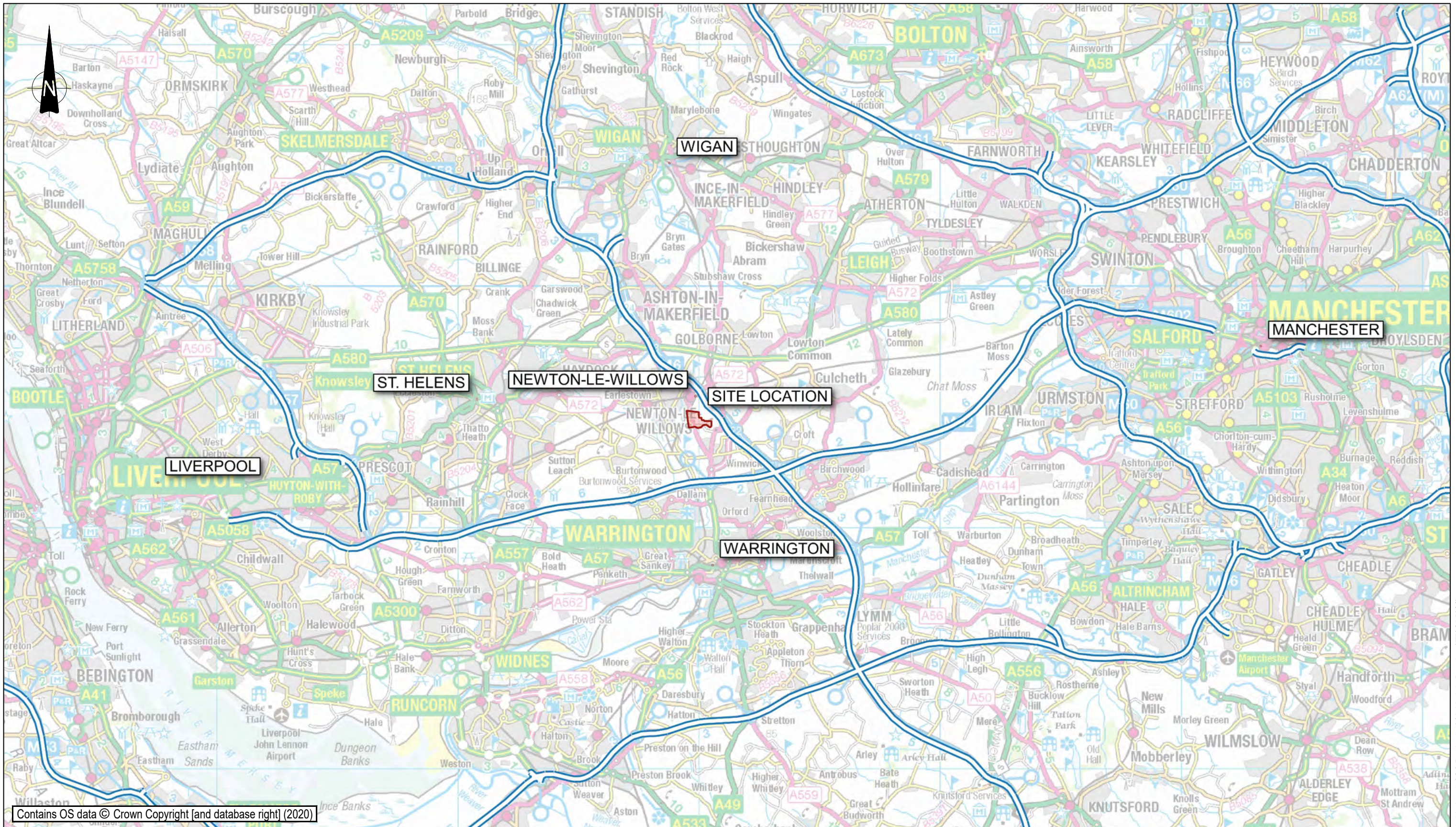
GENERAL NOTES:	Rev:	Description:	Date:	By:	Chkd:
----------------	------	--------------	-------	-----	-------



Office 51-55 Tithebarn Street Liverpool L2 2SB
 Telephone 0151 726 2000
 Email Liverpool@curtins.com
 Web https://www.curtins.com/

Civils & Structures • Transport Planning • Environmental • Infrastructure • Geotechnical • Conservation & Heritage • Principal Designer
 Birmingham • Bristol • Cambridge • Cardiff • Douglas • Dublin • Edinburgh • Glasgow • Kendal • Leeds • Liverpool • London • Manchester • Nottingham

Project:	PARKSIDE INQUIRY		Status:	PRELIMINARY	
Drg Title:	JUNCTION LOCATION PLAN WA 7		Drawn By:	HD	Checked By: AV
			Designed By:	HD	Date: 04/11/20
			Scale:	NTS	
Project No:	Originator:	Volume:	Level:	Type:	Role: Category / Number: Rev:
076570	- CUR	- 00	- XX	- DR	- TP - 06023 - P01



Contains OS data © Crown Copyright [and database right] (2020)

- KEY:**
- Site
 - Highways:
 - Motorway



Merchant Exchange, 17-19 Whitworth Street West, Manchester, M1 5WG
 0161 236 2394
 manchester@curtins.com
 www.curtins.com

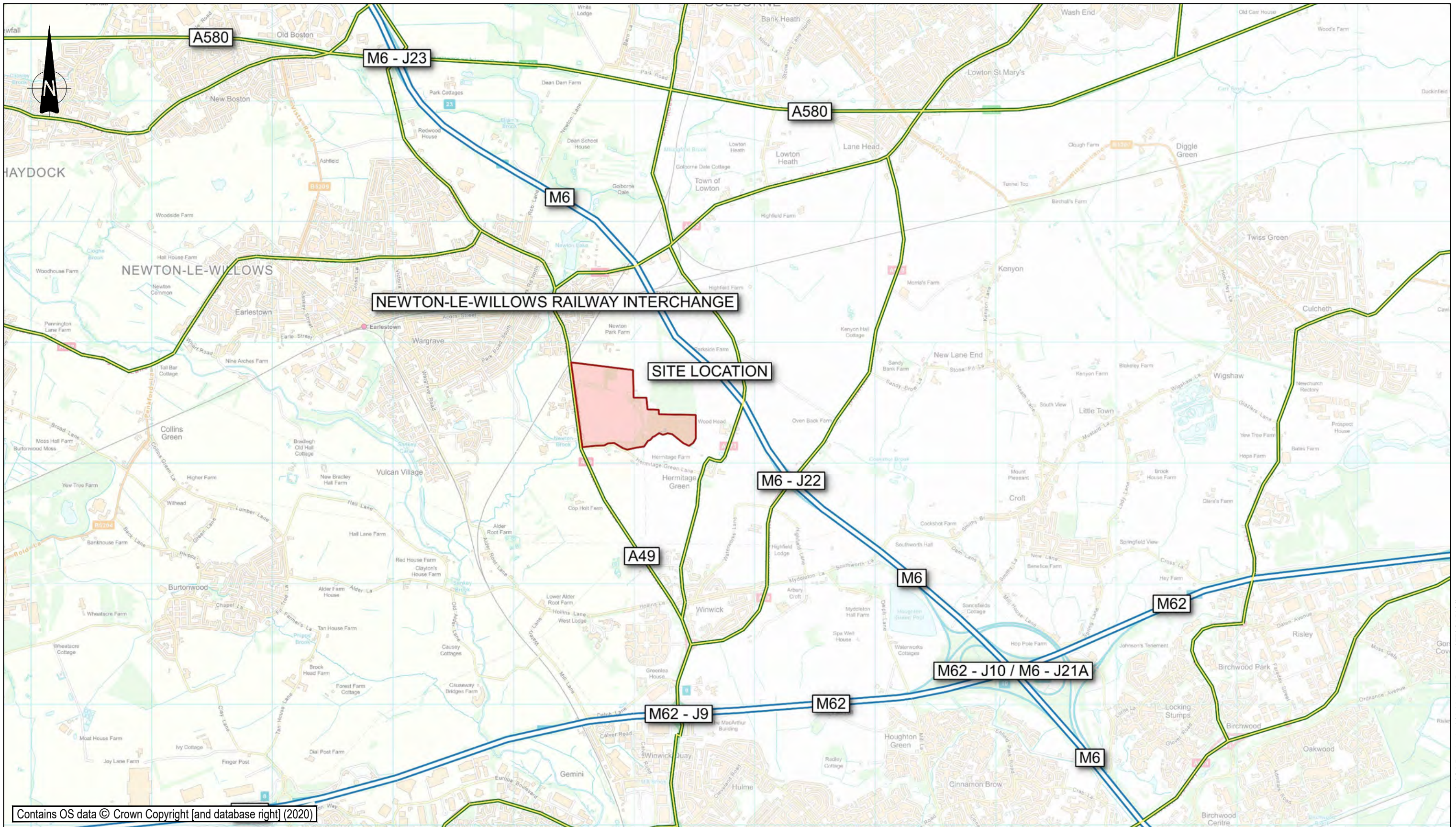
Civils & Structures • Transport Planning • Environmental • Infrastructure • Geotechnical • Conservation & Heritage • Principal Designer
 Birmingham • Bristol • Cambridge • Cardiff • Douglas • Dublin • Edinburgh • Glasgow • Kendal • Leeds • Liverpool • London • Manchester • Nottingham

Project:	PARKSIDE PHASE 1	Status:	PRELIMINARY
Drg Title:	SITE LOCATION PLAN REGIONAL	Drawn By:	DD
		Checked By:	AV
		Designed By:	DD
		Date:	04/11/20
		Scale:	NTS
Project No:	Originator:	Volume:	Level:
		Type:	Role:
		Category / Number:	Rev:

76570 - CUR - 00 - XX - DR - TP - AV001 - P01

GENERAL NOTES:	Rev:	Description:	Date:	By:	Chkd:
----------------	------	--------------	-------	-----	-------

\\mfs02\Projects\076001 - Parkside Inquiry\04-Production\4A-Models-Drawings\TP\CAD\001



Contains OS data © Crown Copyright [and database right] (2020)

- KEY:**
- Site
 - Highways:
 - Motorway
 - A Road



Merchant Exchange, 17-19 Whitworth Street West, Manchester, M1 5WG
 0161 236 2394
 manchester@curtins.com
 www.curtins.com

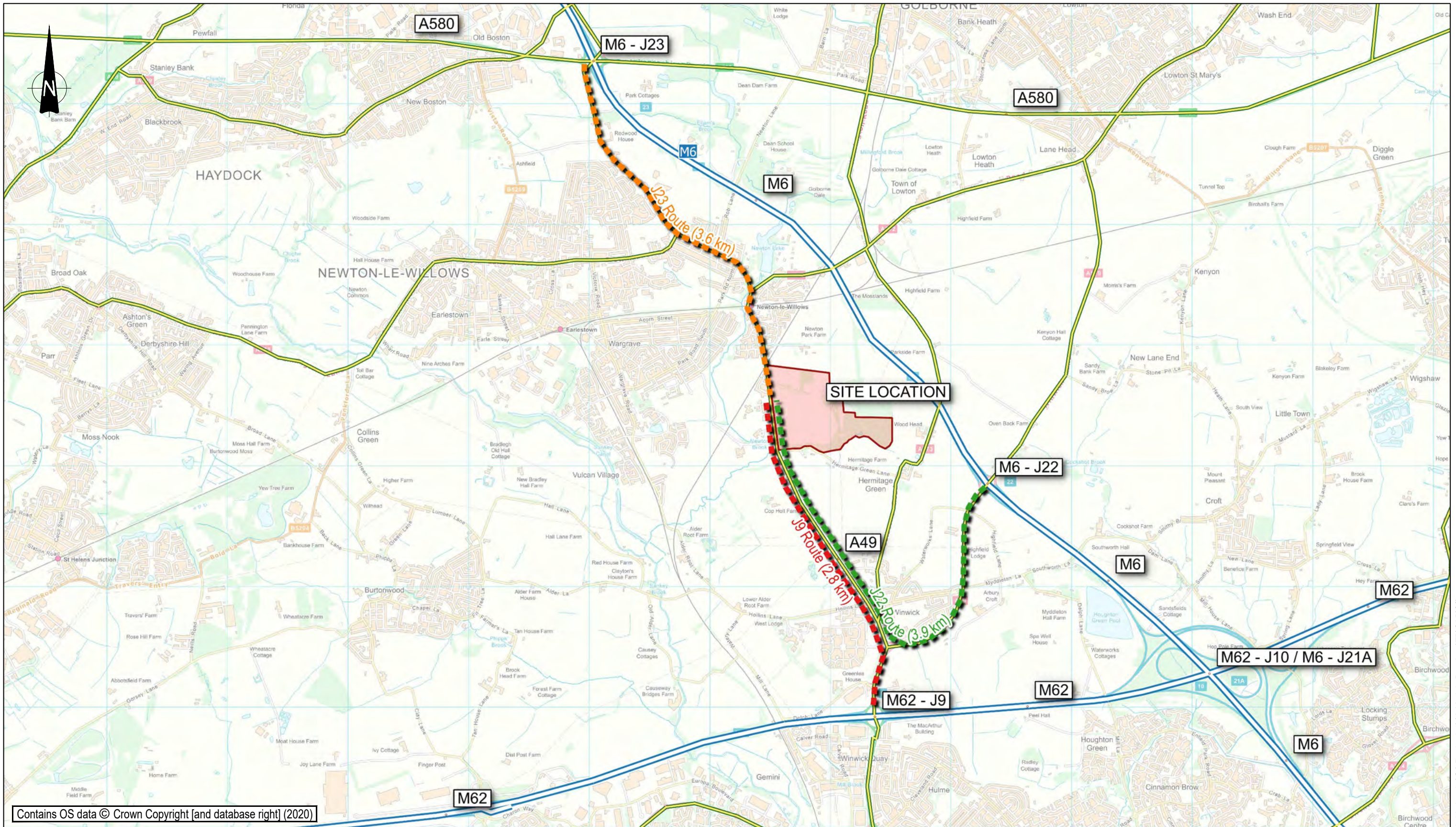
Civils & Structures • Transport Planning • Environmental • Infrastructure • Geotechnical • Conservation & Heritage • Principal Designer
 Birmingham • Bristol • Cambridge • Cardiff • Douglas • Dublin • Edinburgh • Glasgow • Kendal • Leeds • Liverpool • London • Manchester • Nottingham

Project:	PARKSIDE PHASE 1	Status:	PRELIMINARY				
Drg Title:	SITE LOCATION PLAN LOCAL	Drawn By:	DD	Checked By: AV			
		Designed By:	DD	Date: 04/11/20			
		Scale:	NTS				
Project No:	Originator:	Volume:	Level:	Type:	Role:	Category / Number:	Rev:

76570 - CUR - 00 - XX - DR - TP - AV002 - P01

GENERAL NOTES:	Rev:	Description:	Date:	By:	Chkd:
----------------	------	--------------	-------	-----	-------

\\mfs02\Projects\076001 - Parkside Inquiry\04-Production\4A-Models-Drawings\TP\CAD\001



Contains OS data © Crown Copyright [and database right] (2020)

- KEY:**
- Site
 - J22 Route
 - J23 Route
 - J9 Route



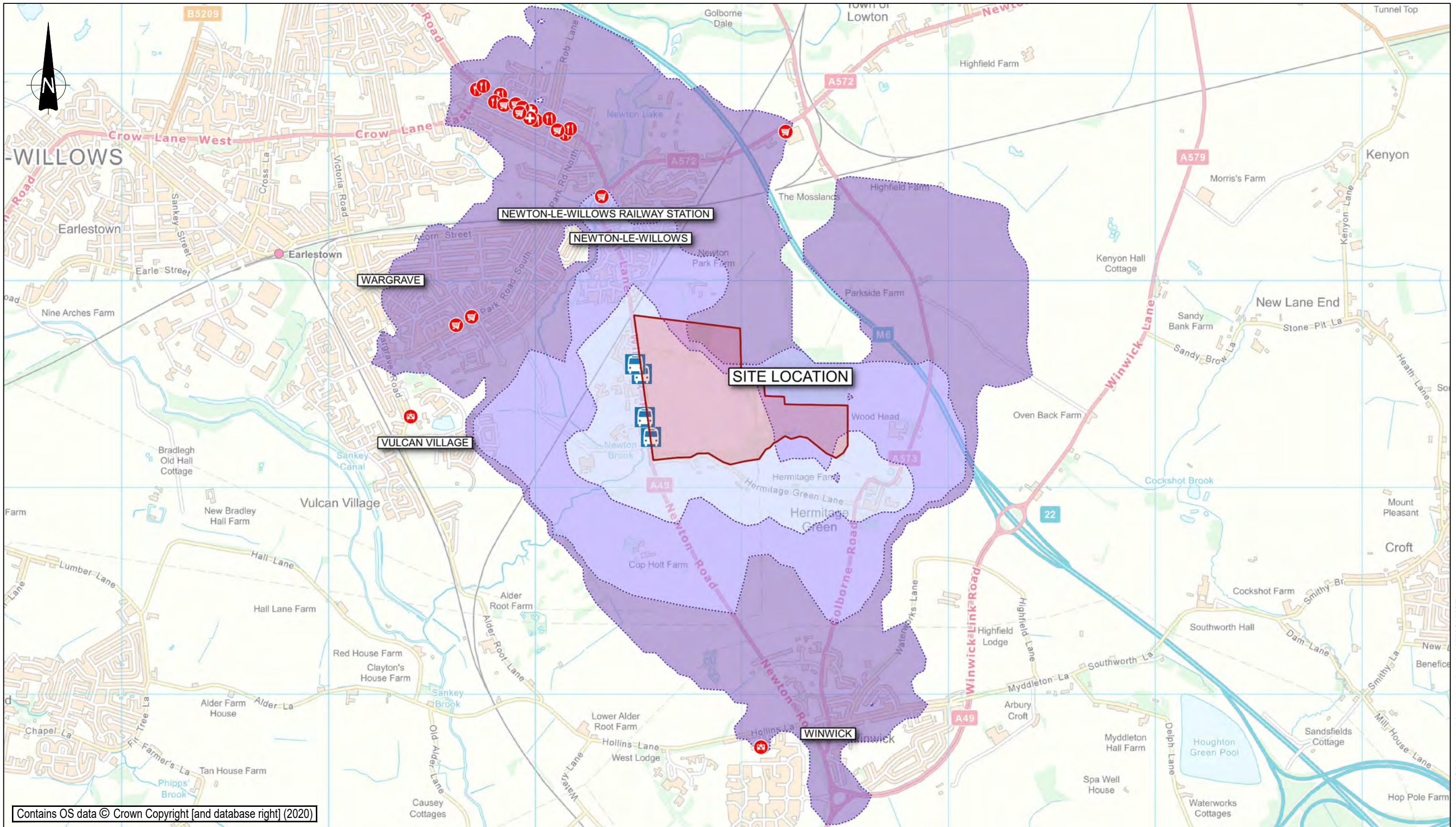
Merchant Exchange, 17-19 Whitworth Street West, Manchester, M1 5WG
 0161 236 2394
 manchester@curtins.com
 www.curtins.com

Civils & Structures • Transport Planning • Environmental • Infrastructure • Geotechnical • Conservation & Heritage • Principal Designer
 Birmingham • Bristol • Cambridge • Cardiff • Douglas • Dublin • Edinburgh • Glasgow • Kendal • Leeds • Liverpool • London • Manchester • Nottingham

Project: PARKSIDE PHASE 1		Status: PRELIMINARY	
Drg Title: STRATEGIC ROAD NETWORK		Drawn By: DD	Checked By: AV
Project No: 76570 - CUR - 00 - XX - DR - TP - AV003 - P01		Designed By: DD	Date: 04/11/20
Originator: Volume: Level: Type: Role: Category / Number: Rev:		Scale: NTS	

GENERAL NOTES:	Rev:	Description:	Date:	By:	Chkd:
----------------	------	--------------	-------	-----	-------

\\mfs02\Projects\076001 - Parkside Inquiry\04-Production\4A-Models-Drawings\TP\CAD\001



Contains OS data © Crown Copyright [and database right] (2020)

- KEY:**
- Site
 - Walking Catchment: 500m
 - 1000m
 - 2000m
 - Amenities:
 - Bus Stops
 - Educational Facilities
 - Food and Drink
 - Medical Facilities
 - Retail



Merchant Exchange, 17-19 Whitworth Street West, Manchester, M1 5WG
 0161 236 2394
 manchester@curtins.com
 www.curtins.com

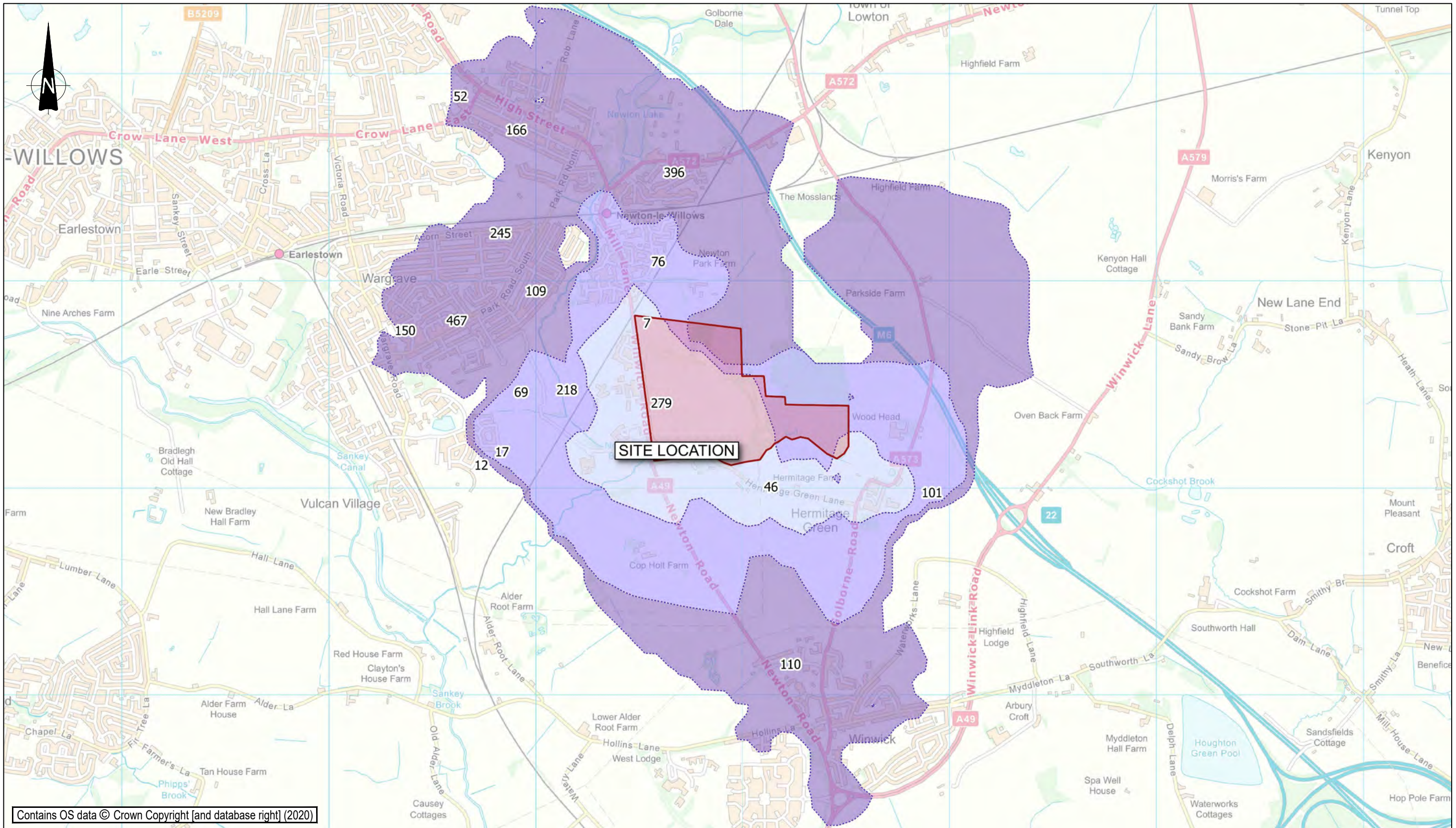
Civils & Structures • Transport Planning • Environmental • Infrastructure • Geotechnical • Conservation & Heritage • Principal Designer
 Birmingham • Bristol • Cambridge • Cardiff • Douglas • Dublin • Edinburgh • Glasgow • Kendal • Leeds • Liverpool • London • Manchester • Nottingham

Project:	PARKSIDE PHASE 1		Status:	PRELIMINARY	
Drg Title:	ACCESSIBILITY PEDESTRIAN CATCHMENT		Drawn By:	DD	Checked By: AV
			Designed By:	DD	Date: 04/11/20
			Scale:	NTS	
Project No:	Originator:	Volume:	Level:	Type:	Role: Category / Number: Rev:

76570 - CUR - 00 - XX - DR - TP - AV004 - P01

GENERAL NOTES:	Rev:	Description:	Date:	By:	Chkd:
----------------	------	--------------	-------	-----	-------

\\mfs02\Projects\076001 - Parkside Inquiry\04-Production\4A-Models-Drawings\TP\CAD\001



Contains OS data © Crown Copyright [and database right] (2020)

- KEY:**
- Site
 - Walking Catchment:**
 - 500m
 - 1000m
 - 2000m



Merchant Exchange, 17-19 Whitworth Street West, Manchester, M1 5WG
 0161 236 2394
 manchester@curtins.com
 www.curtins.com

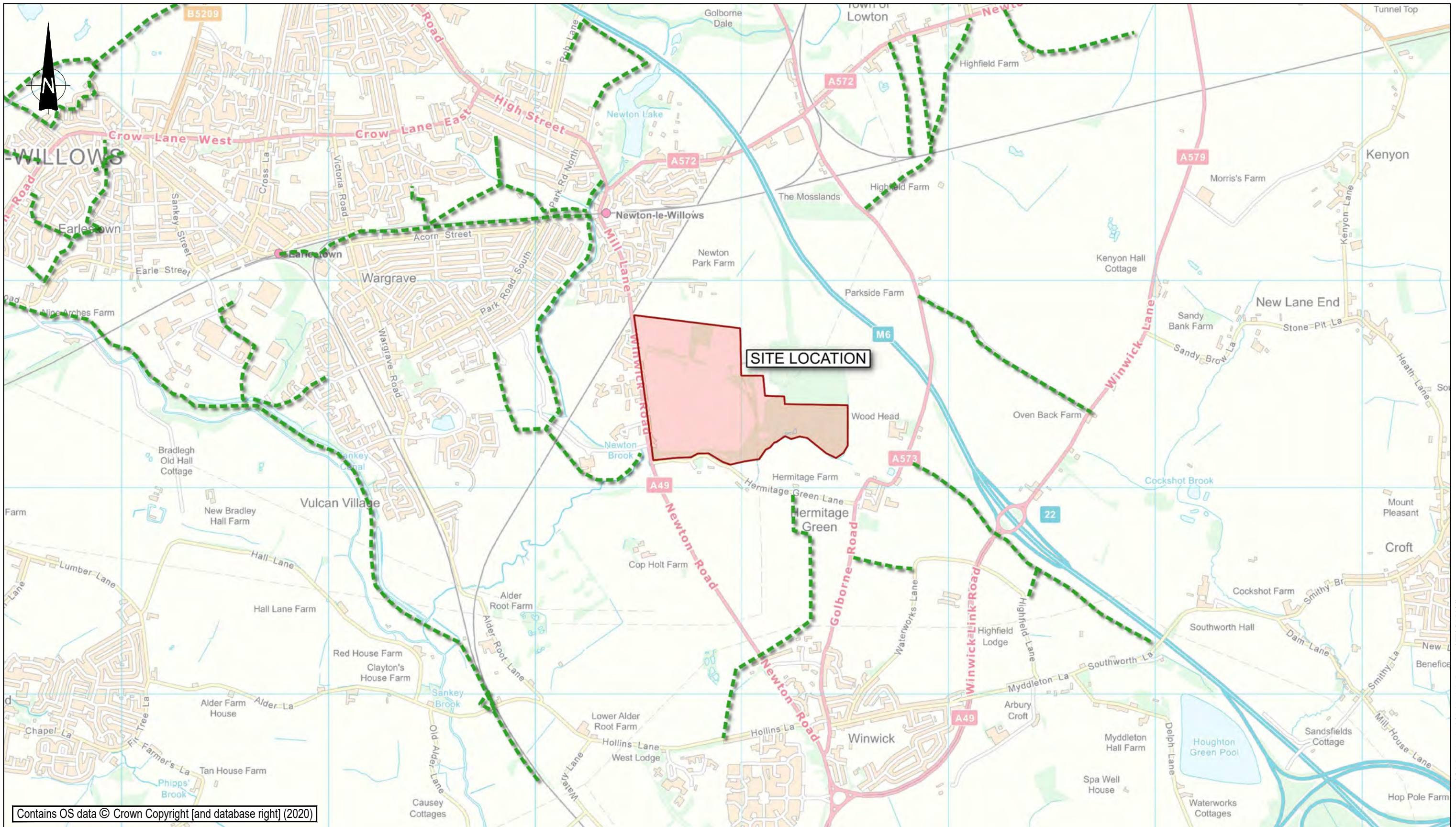
Civils & Structures • Transport Planning • Environmental • Infrastructure • Geotechnical • Conservation & Heritage • Principal Designer
 Birmingham • Bristol • Cambridge • Cardiff • Douglas • Dublin • Edinburgh • Glasgow • Kendal • Leeds • Liverpool • London • Manchester • Nottingham

Project: PARKSIDE PHASE 1		Status: PRELIMINARY	
Drg Title: ACCESSIBILITY NUMBER OF DWELLINGS WITHIN WALKING CATCHMENT		Drawn By: DD	Checked By: AV
		Designed By: DD	Date: 04/11/20
		Scale: NTS	
Project No:	Originator:	Volume:	Level: Type: Role: Category / Number: Rev:

76570 - CUR - 00 - XX - DR - TP - AV005 - P01

GENERAL NOTES:	Rev:	Description:	Date:	By:	Chkd:
----------------	------	--------------	-------	-----	-------

\\mfs02\Projects\076001 - Parkside Inquiry\04-Production\4A-Models-Drawings\TP\CAD\005



Contains OS data © Crown Copyright [and database right] (2020)

KEY:
■ Site
--- PRoW



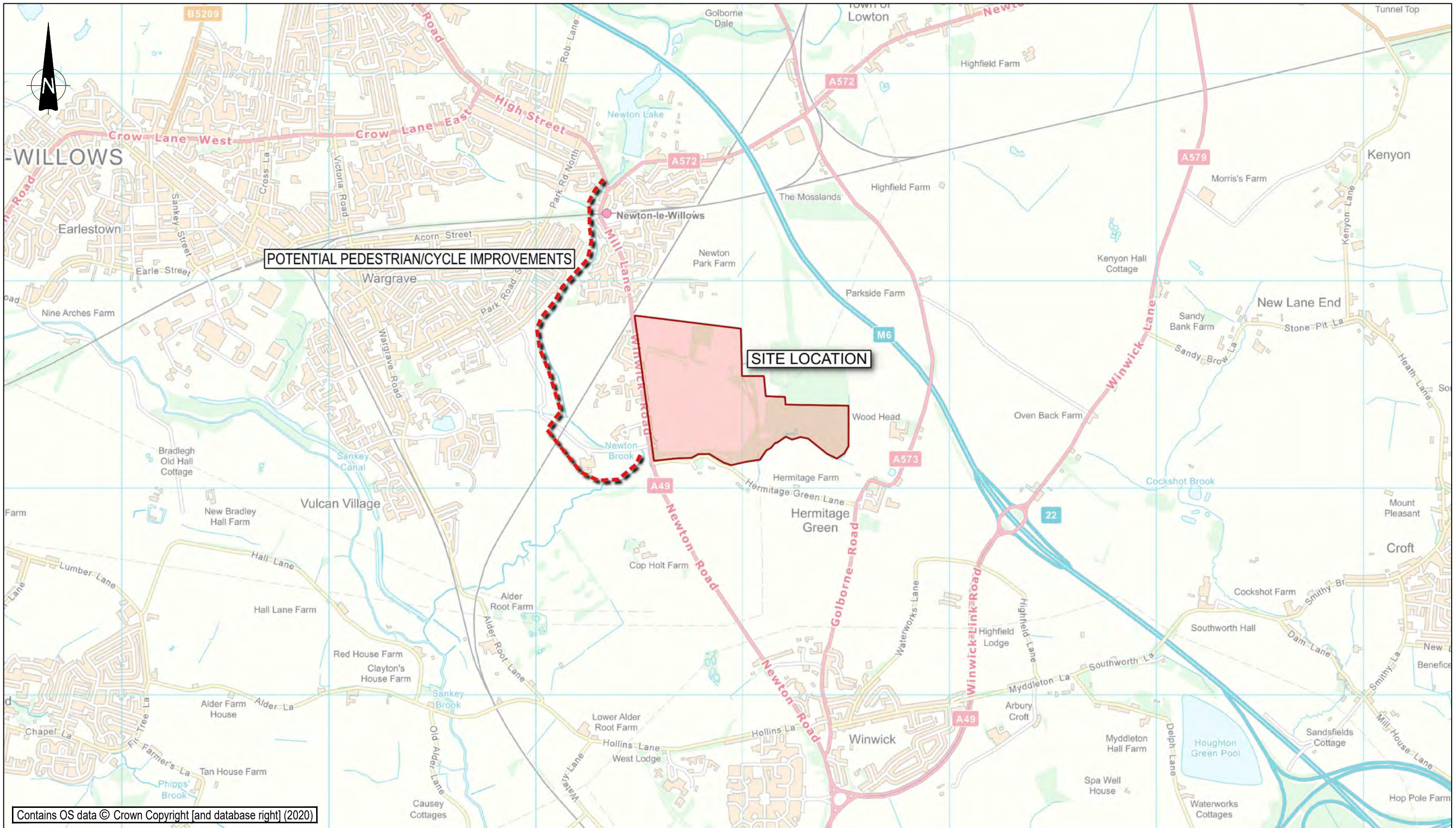
Merchant Exchange, 17-19 Whitworth Street West, Manchester, M1 5WG
 0161 236 2394
 manchester@curtins.com
 www.curtins.com

Civils & Structures • Transport Planning • Environmental • Infrastructure • Geotechnical • Conservation & Heritage • Principal Designer
 Birmingham • Bristol • Cambridge • Cardiff • Douglas • Dublin • Edinburgh • Glasgow • Kendal • Leeds • Liverpool • London • Manchester • Nottingham

Project: PARKSIDE PHASE 1		Status: PRELIMINARY	
Drg Title: PUBLIC RIGHTS OF WAY		Drawn By: DD	Checked By: AV
		Designed By: DD	Date: 04/11/20
		Scale: NTS	
Project No:	Originator:	Volume:	Level:
76570 - CUR - 00 - XX - DR - TP - AV006 - P01		Category / Number:	Rev:

GENERAL NOTES:	Rev:	Description:	Date:	By:	Chkd:
----------------	------	--------------	-------	-----	-------

\\mfs02\Projects\076001 - Parkside Inquiry\04-Production\4A-Models-Drawings\TP\CAD\006



Contains OS data © Crown Copyright [and database right] (2020)

KEY:
 Site
 Potential Cycle/Pedestrian Improvements



Merchant Exchange, 17-19 Whitworth Street West, Manchester, M1 5WG
 0161 236 2394
 manchester@curtins.com
 www.curtins.com

Civils & Structures • Transport Planning • Environmental • Infrastructure • Geotechnical • Conservation & Heritage • Principal Designer
 Birmingham • Bristol • Cambridge • Cardiff • Douglas • Dublin • Edinburgh • Glasgow • Kendal • Leeds • Liverpool • London • Manchester • Nottingham

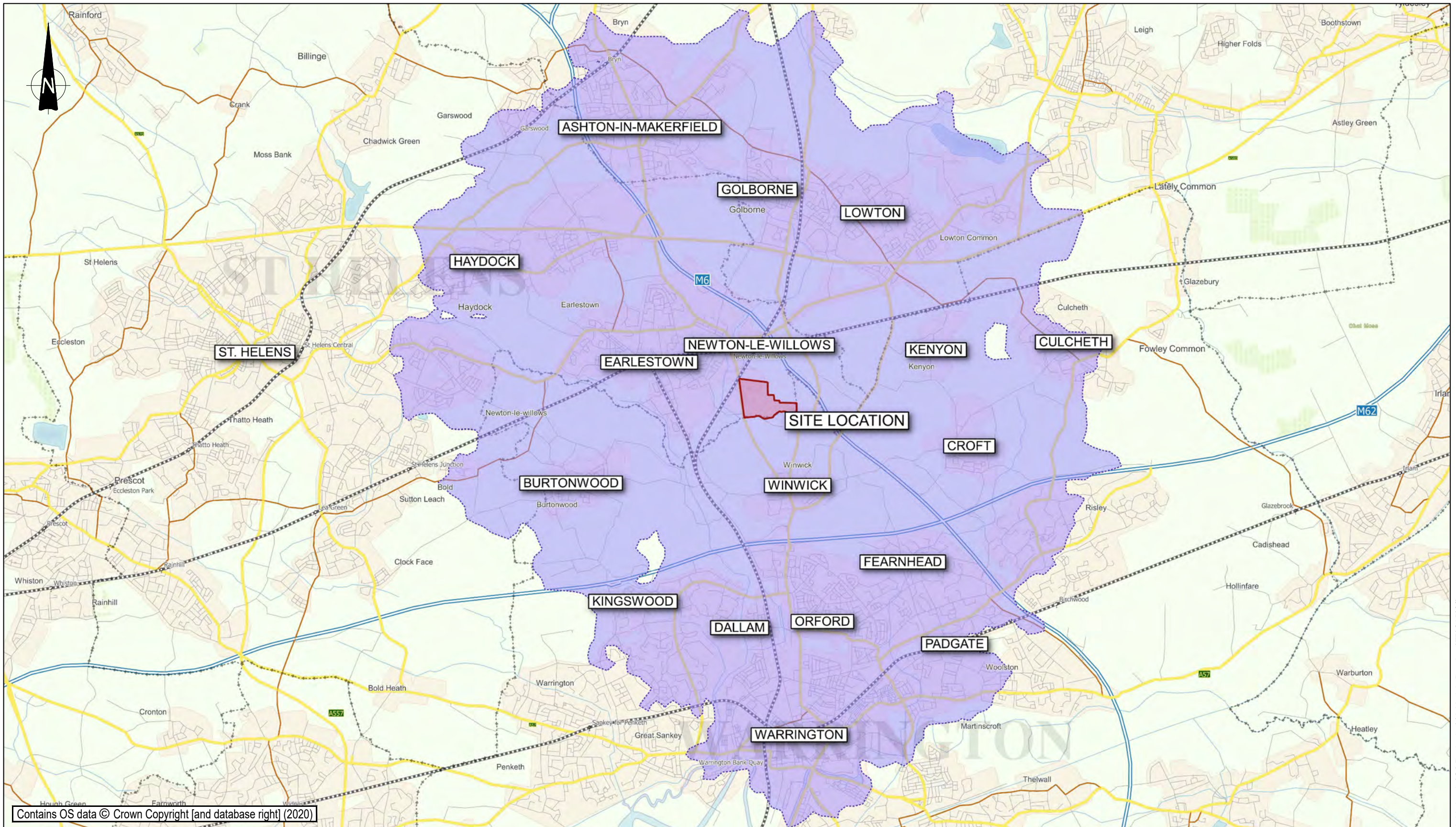
Project:	PARKSIDE PHASE 1		Status:	PRELIMINARY	
Drg Title:	AREA OF POTENTIAL CYCLE / PEDESTRIAN IMPROVEMENTS		Drawn By:	DD	Checked By: AV
			Designed By:	DD	Date: 04/11/20
			Scale:	NTS	

Project No: Originator: Volume: Level: Type: Role: Category / Number: Rev:

76570 - CUR - 00 - XX - DR - TP - AV007 - P01

GENERAL NOTES:	Rev:	Description:	Date:	By:	Chkd:
----------------	------	--------------	-------	-----	-------

\\mfs02\Projects\076001 - Parkside Inquiry\04-Production\4A-Models-Drawings\TP\CAD\001



Contains OS data © Crown Copyright [and database right] (2020)

KEY:

- Site
- Cycle Catchment: 8000m



Merchant Exchange, 17-19 Whitworth Street West, Manchester, M1 5WG
 0161 236 2394
 manchester@curtins.com
 www.curtins.com

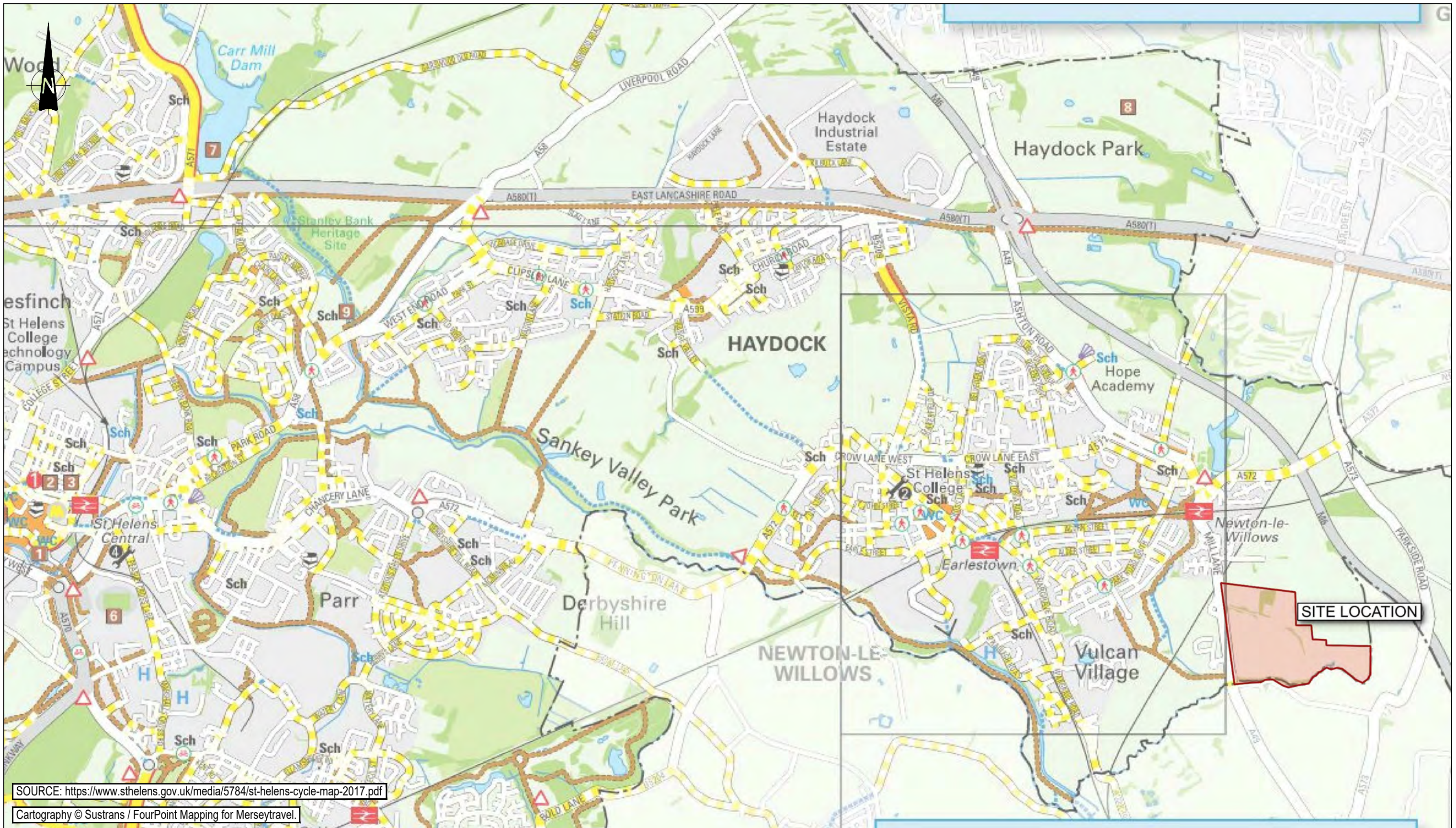
Civils & Structures • Transport Planning • Environmental • Infrastructure • Geotechnical • Conservation & Heritage • Principal Designer
 Birmingham • Bristol • Cambridge • Cardiff • Douglas • Dublin • Edinburgh • Glasgow • Kendal • Leeds • Liverpool • London • Manchester • Nottingham

Project: PARKSIDE PHASE 1	Status: PRELIMINARY
Drg Title: ACCESSIBILITY CYCLE CATCHMENT	Drawn By: DD Checked By: AV
	Designed By: DD Date: 04/11/20
Scale: NTS	
Project No: Originator: Volume: Level: Type: Role: Category / Number: Rev:	

76570 - CUR - 00 - XX - DR - TP - AV008 - P01

GENERAL NOTES:	Rev:	Description:	Date:	By:	Chkd:
----------------	------	--------------	-------	-----	-------

\\mfs02\Projects\076001 - Parkside Inquiry\04-Production\4A-Models-Drawings\TP\CAD\001



SOURCE: <https://www.sthelens.gov.uk/media/5784/st-helens-cycle-map-2017.pdf>

Cartography © Sustrans / FourPoint Mapping for Merseytravel.

- Off-road cycle track
- On-road signed cycle route
- Suggested cycle route
- On-road cycle lane / Bus lanes
- Footpath-please walk
- Motorway / Major Road
- A road / B road
- Minor road (arrow indicates steep hill pointing downhill)
- Railway station (with name)



Merchant Exchange, 17-19 Whitworth Street West, Manchester, M1 5WG
 0161 236 2394
 manchester@curtins.com
 www.curtins.com

Civils & Structures • Transport Planning • Environmental • Infrastructure • Geotechnical • Conservation & Heritage • Principal Designer
 Birmingham • Bristol • Cambridge • Cardiff • Douglas • Dublin • Edinburgh • Glasgow • Kendal • Leeds • Liverpool • London • Manchester • Nottingham

Project: **PARKSIDE PHASE 1**

Drg Title: **LOCAL CYCLE NETWORK**

Status: **PRELIMINARY**

Drawn By: DD Checked By: AV

Designed By: DD Date: 04/11/20

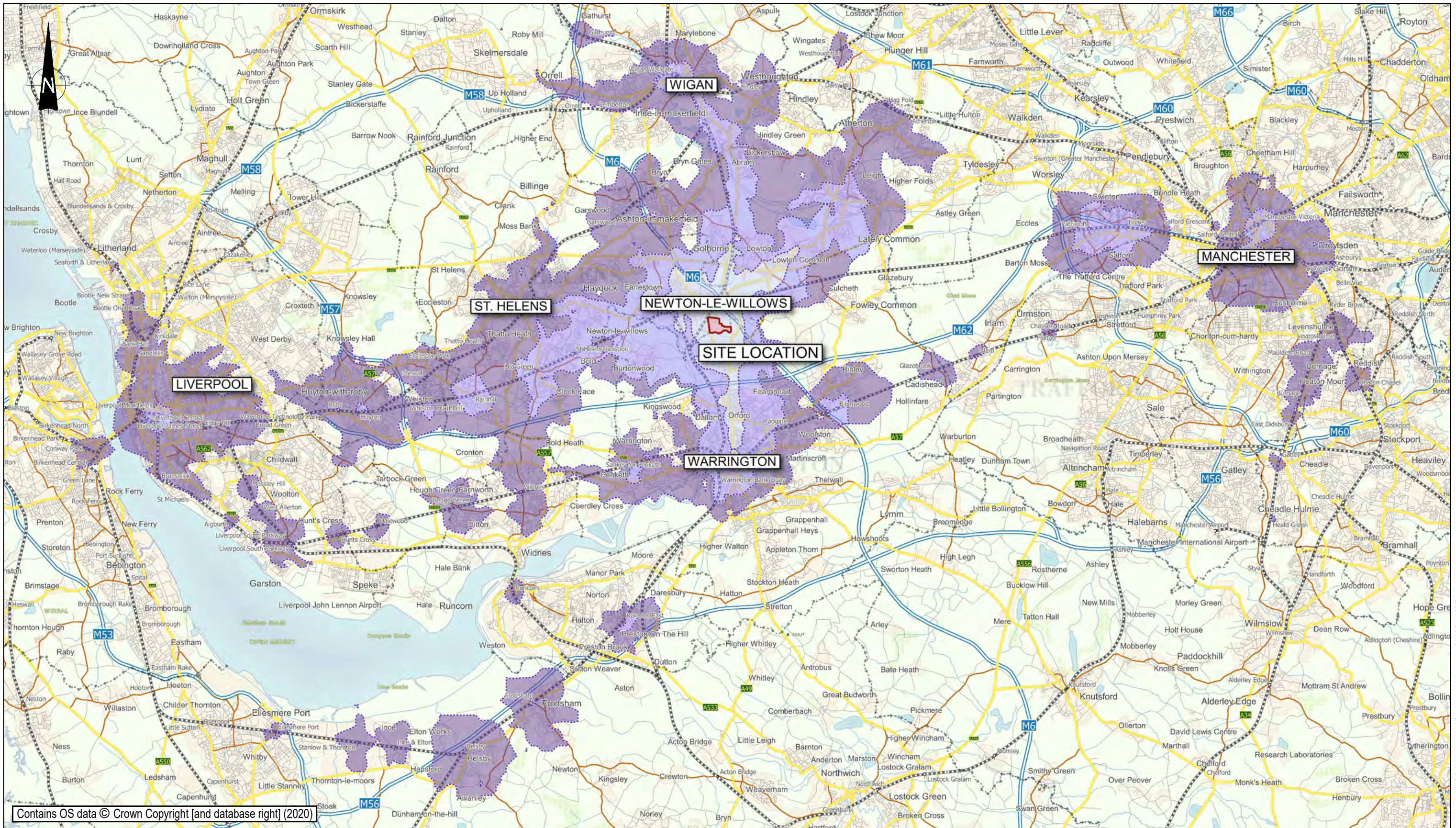
Scale: NTS

Project No: Originator: Volume: Level: Type: Role: Category / Number: Rev:

76570 - CUR - 00 - XX - DR - TP - AV009 - P01

GENERAL NOTES:	Rev:	Description:	Date:	By:	Chkd:

\\mafs02\Projects\076001 - Parkside Inquiry\04-Production\4A-Models-Drawings\TP\CAD\001



Contains OS data © Crown Copyright [and database right] (2020)

- KEY:**
- Site Public Transport Catchment:
 - 20 minutes
 - 40 minutes
 - 60 minutes



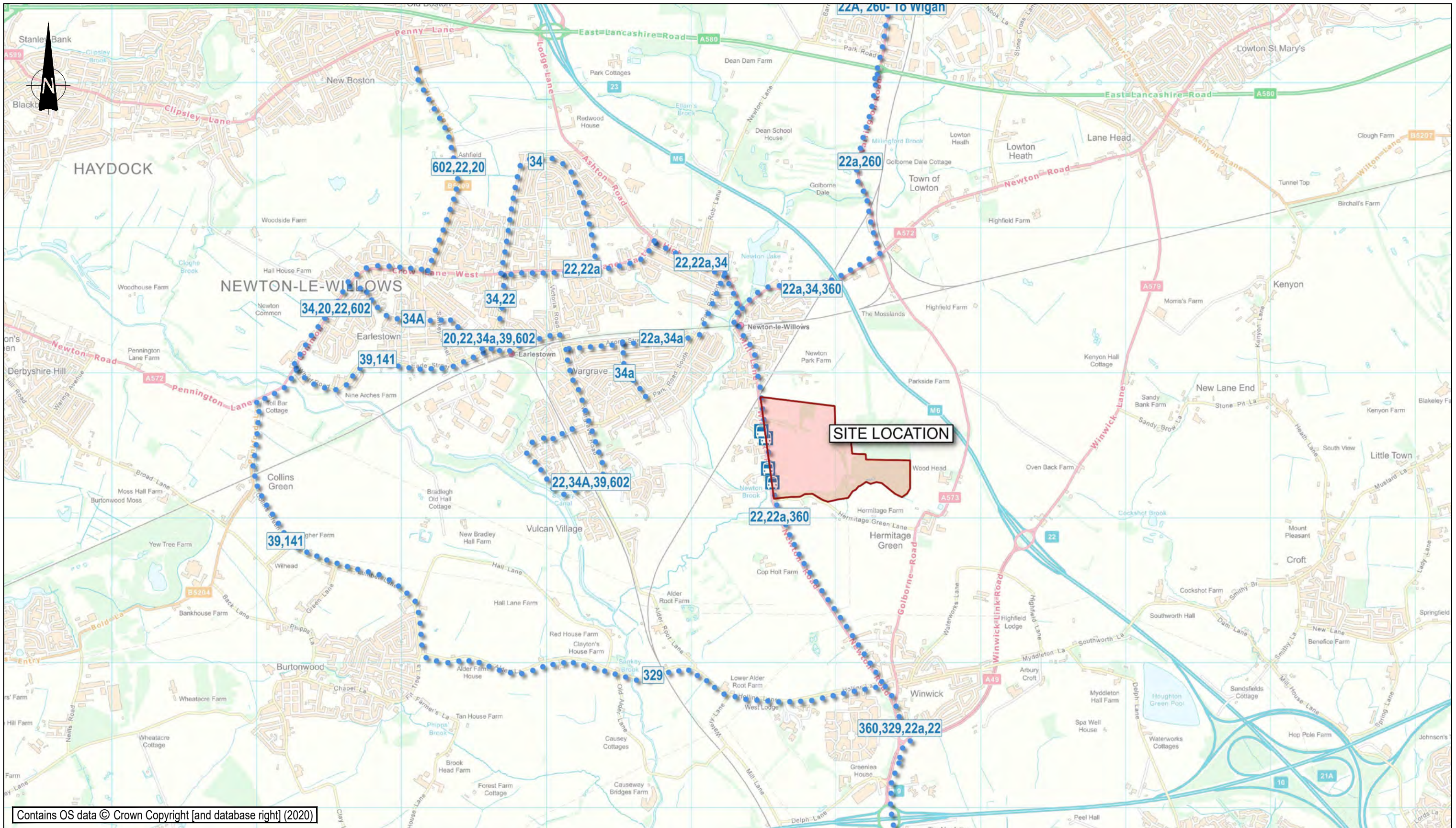
Merchant Exchange, 17-19 Whitworth Street West, Manchester, M1 5WG
 0161 236 2394
 manchester@curtins.com
 www.curtins.com

Project:	PARKSIDE PHASE 1		Status:	PRELIMINARY	
Drg Title:	ACCESSIBILITY PUBLIC TRANSPORT CATCHMENT		Drawn By:	DD	Checked By: AV
			Designed By:	DD	Date: 04/11/20
			Scale:	NTS	
Project No:	Originator:	Volume:	Level:	Type:	Role: Category / Number: Rev:

76570 - CUR - 00 - XX - DR - TP - AV010 - P01

GENERAL NOTES:	Rev:	Description:	Date:	By:	Chkd:
----------------	------	--------------	-------	-----	-------

\\mfs02\Projects\076001 - Parkside Inquiry\04-Production\4A-Models-Drawings\TP\CAD\001



Contains OS data © Crown Copyright [and database right] (2020)

- KEY:**
- Site
 - Bus Services:
 - Bus Route
 - Bus Stops



Merchant Exchange, 17-19 Whitworth Street West, Manchester, M1 5WG
 0161 236 2394
 manchester@curtins.com
 www.curtins.com

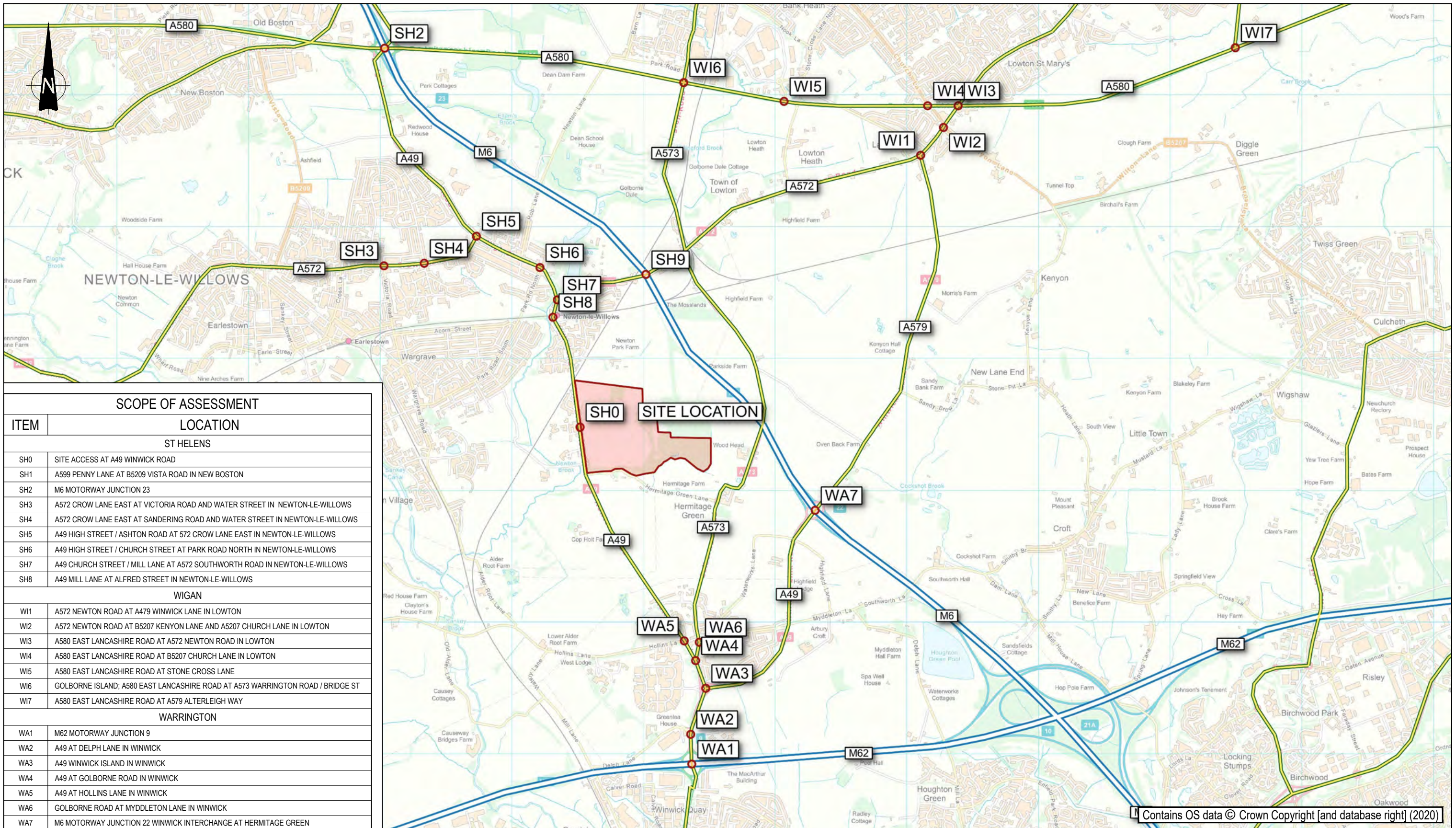
Project: PARKSIDE PHASE 1		Status: PRELIMINARY	
Drg Title: BUS ROUTE NETWORK		Drawn By: DD	Checked By: AV
		Designed By: DD	Date: 04/11/20
		Scale: NTS	
Project No:	Originator:	Volume:	Level:
			Type:
			Role:
			Category / Number:
			Rev:

GENERAL NOTES:	Rev:	Description:	Date:	By:	Chkd:
----------------	------	--------------	-------	-----	-------

Civils & Structures • Transport Planning • Environmental • Infrastructure • Geotechnical • Conservation & Heritage • Principal Designer
 Birmingham • Bristol • Cambridge • Cardiff • Douglas • Dublin • Edinburgh • Glasgow • Kendal • Leeds • Liverpool • London • Manchester • Nottingham

76570 - CUR - 00 - XX - DR - TP - AV011 - P01

\\mfs02\Projects\076001 - Parkside Inquiry\04-Production\4A-Models-Drawings\TP\CAD\001



SCOPE OF ASSESSMENT

ITEM	LOCATION
ST HELENS	
SH0	SITE ACCESS AT A49 WINWICK ROAD
SH1	A599 PENNY LANE AT B5209 VISTA ROAD IN NEW BOSTON
SH2	M6 MOTORWAY JUNCTION 23
SH3	A572 CROW LANE EAST AT VICTORIA ROAD AND WATER STREET IN NEWTON-LE-WILLOWS
SH4	A572 CROW LANE EAST AT SANDERING ROAD AND WATER STREET IN NEWTON-LE-WILLOWS
SH5	A49 HIGH STREET / ASHTON ROAD AT 572 CROW LANE EAST IN NEWTON-LE-WILLOWS
SH6	A49 HIGH STREET / CHURCH STREET AT PARK ROAD NORTH IN NEWTON-LE-WILLOWS
SH7	A49 CHURCH STREET / MILL LANE AT A572 SOUTHWORTH ROAD IN NEWTON-LE-WILLOWS
SH8	A49 MILL LANE AT ALFRED STREET IN NEWTON-LE-WILLOWS
WIGAN	
WI1	A572 NEWTON ROAD AT A479 WINWICK LANE IN LOWTON
WI2	A572 NEWTON ROAD AT B5207 KENYON LANE AND A5207 CHURCH LANE IN LOWTON
WI3	A580 EAST LANCASHIRE ROAD AT A572 NEWTON ROAD IN LOWTON
WI4	A580 EAST LANCASHIRE ROAD AT B5207 CHURCH LANE IN LOWTON
WI5	A580 EAST LANCASHIRE ROAD AT STONE CROSS LANE
WI6	GOLBORNE ISLAND; A580 EAST LANCASHIRE ROAD AT A573 WARRINGTON ROAD / BRIDGE ST
WI7	A580 EAST LANCASHIRE ROAD AT A579 ALTERLEIGH WAY
WARRINGTON	
WA1	M62 MOTORWAY JUNCTION 9
WA2	A49 AT DELPH LANE IN WINWICK
WA3	A49 WINWICK ISLAND IN WINWICK
WA4	A49 AT GOLBORNE ROAD IN WINWICK
WA5	A49 AT HOLLINS LANE IN WINWICK
WA6	GOLBORNE ROAD AT MYDDLETON LANE IN WINWICK
WA7	M6 MOTORWAY JUNCTION 22 WINWICK INTERCHANGE AT HERMITAGE GREEN

- KEY:**
- Site
 - Assessed Junctions



Merchant Exchange, 17-19 Whitworth Street West, Manchester, M1 5WG
 0161 236 2394
 manchester@curtins.com
 www.curtins.com

Civils & Structures • Transport Planning • Environmental • Infrastructure • Geotechnical • Conservation & Heritage • Principal Designer
 Birmingham • Bristol • Cambridge • Cardiff • Douglas • Dublin • Edinburgh • Glasgow • Kendal • Leeds • Liverpool • London • Manchester • Nottingham

Project:	PARKSIDE PHASE 1		Status:	PRELIMINARY	
Drg Title:	SCOPE OF ASSESSMENT		Drawn By:	DD	Checked By: AV
			Designed By:	DD	Date: 05/11/20
			Scale:	NTS	
Project No:	Originator:	Volume:	Level:	Type:	Role: Category / Number: Rev:

76570 - CUR - 00 - XX - DR - TP - AV012 - P01

GENERAL NOTES:	Rev:	Description:	Date:	By:	Chkd:
----------------	------	--------------	-------	-----	-------

\\mfs02\Projects\076001 - Parkside Inquiry\04-Production\4A-Models-Drawings\TP\CAD\005

Our Locations

Birmingham

2 The Wharf
Bridge Street
Birmingham
B1 2JS
T. 0121 643 4694
birmingham@curtins.com

Bristol

Quayside
40-58 Hotwell Road
Bristol
BS8 4UQ
T. 0117 302 7560
bristol@curtins.com

Cambridge

50 Cambridge Place
Cambridge
CB2 1NS
T. 01223 631 799
cambridge@curtins.com

Cardiff

3 Cwrt-y-Parc
Earlswood Road
Cardiff
CF14 5GH
T. 029 2068 0900
cardiff@curtins.com

Douglas

Varley House
29-31 Duke Street
Douglas
Isle of Man
IM1 2AZ
T. 01624 624 585
douglas@curtins.com

Dublin

11 Pembroke Lane
Dublin 2
D02 CX82
Ireland
T. +353 1 507 9447
dublin@curtins.com

Edinburgh

1a Belford Road
Edinburgh
EH4 3BL
T. 0131 225 2175
edinburgh@curtins.com

Glasgow

Queens House
29 St Vincent Place
Glasgow
G1 2DT
T. 0141 319 8777
glasgow@curtins.com

Kendal

Units 24 & 25 Riverside Place
K Village
Lound Road
Kendal
LA9 7FH
T. 01539 724 823
kendal@curtins.com

Leeds

Ground Floor
Rose Wharf
78-80 East Street
Leeds
LS9 8EE
T. 0113 274 8509
leeds@curtins.com

Liverpool

51-55 Tithebarn Street
Liverpool
L2 2SB
T. 0151 726 2000
liverpool@curtins.com

London

40 Compton Street
London
EC1V 0BD
T. 020 7324 2240
london@curtins.com

Manchester

Merchant Exchange
17-19 Whitworth Street West
Manchester
M1 5WG
T. 0161 236 2394
manchester@curtins.com

Nottingham

56 The Ropewalk
Nottingham
NG1 5DW
T. 0115 941 5551
nottingham@curtins.com