

Information for Parents

Special Educational Needs



What is the local offer?

Our local offer is information for parents/carers of children who have Special Educational Needs (SEN) or a disability, and those who support children with additional needs. The information outlines the support and provision they can expect to receive whilst attending Thatto Heath Community Primary

Thatto Heath Community Primary School

At Thatto Heath Community Primary School *“inclusivity permeates all aspects of school life and is at the core of the Whole School Ethos and Values.” (IQM Assessment Report, June 2014)*

All pupils in our school receive quality first teaching. This means all learners’ individual and special needs are met effectively so that they receive their educational entitlement and are given equal access to a broad, balanced and relevant curriculum. High quality provision for all learners is central to curriculum planning.

OFSTED praised the provision for pupils with SEND in our recent (March 2014) inspection and noted that children with SEND make GOOD progress at Thatto Heath CPS.

Any pupil may have special educational needs at some time during his/her time in school and therefore a wide variety of strategies will be used to meet these needs as they are identified.

We recently achieved the INCLUSION QUALITY MARK in recognition of our excellent inclusive practice.



What are Special Educational Needs?

At Thatto Heath Community Primary School (THCPS) pupils who require extra support or intervention, in addition to quality first teaching, in order to make progress towards their individual targets are identified as having Special Educational Needs.

Some pupils may require a short term intervention in one or more identified areas. Others may have a long term difficulty or more complex needs that require on-going additional support. Some needs may have already been identified before a pupil attends THCPS however for some pupils their SEN may become apparent later on as they move through the school.

How will school know if my child needs extra help?

Strong links between school and you as parents will help to ensure that, when a child is identified as having SEN, their needs are met fully allowing them to achieve the best possible outcomes.

At THCPS the progress and attainment of ALL pupils is monitored closely by the Mrs Ireland, The Governing Body and Senior Leadership Team. As parents you are informed of your child's progress through parents' evenings, reports and discussions with their class teacher.

If a pupil experiences difficulties and there are concerns about progress in their learning despite differentiation and additional support provided by their class teacher they may be identified as having Special Educational Needs and requiring support. As parents you will be informed if this is the case.

A range of strategies are in place to track the progress of all pupils and we are committed to early identification and intervention for pupils who we feel may have Special Educational Needs.

Who is the best person to talk to about my child's difficulties with learning/SEN?

If you have any concerns whatsoever about your child's learning and progress we would encourage you to discuss this with their class teacher as soon as possible. Don't feel that you have to wait until parents' evening! You can call the school office to arrange a suitable time to discuss your concerns.

At Thatto Heath Community Primary School Mrs McCallion is the Special Needs Co-ordinator (SENCo). Class teachers speak to Mrs McCallion regularly regarding concerns they may have about individual pupils.

Mrs McCallion is also available to meet with parents to discuss any concerns they may have about their child's difficulties.

At THCPS we strive to maintain an 'Open Door' policy and Mrs Ireland encourages you as parents to discuss any concerns that you may have.

How will I know how the school will support my child?

If your child is identified as having Special Educational Needs and placed on the SEN register this will have been discussed with you. SEN children will receive an Individual or Group Education Plan outlining their personal targets and what support will be in place to help them to achieve their targets.

These targets will be reviewed regularly in school by the class teacher, SENCo, support staff and pupils.

If your child has an Individual Education Plan (IEP) a copy of this will be sent home at least termly. If you would like to discuss the plan or targets at any time your child's class teacher would be happy to do so.

The level of support your child receives will depend on their needs. When a pupil has long term or complex SEN, requiring high levels of support, regular review meetings will be arranged with school staff including the SENCo and any other agencies involved such as the Educational Psychologist.

If you are uncertain of the levels of support your child receives please discuss this with their class teacher or Mrs McCallion.

Support may be provided in groups or individually depending upon the level of needs. Often this support will be provided by Learning Support Assistants or other teachers with specialist knowledge and training.



How will the curriculum be matched to meet my child's needs?

Throughout the school at THCPS, work will be adapted to meet the individual learning needs of each child. Teachers carefully plan and differentiate the learning to meet all pupils' needs.

In some year groups children are in sets depending upon ability. Support may also be provided by additional adults working in the classroom or by specialist resources such as visual aids and prompts. Other children may take part in an Intervention Scheme such as Toe by Toe, Beat Dyslexia or Assertive Mentoring.

If your child has an IEP the support they receive will be outlined in the plan.



How will I know how my child is doing?

At Thatto Heath we regularly inform parents of children's progress and attainment. This is done through parents' evenings throughout the year and reports at the end of the Academic years. If we did have any concerns regarding any child we would request a meeting with parents/carers to discuss this in more detail.

If your child has an IEP then a copy of the review would be sent home – this would allow you to see which targets have been achieved and which ones require further learning .

How will the school help me to support my child's learning?

At THCPS we always encourage close links between home and school. This is even more important for children with Special Educational Needs (SEN) so as to work together to ensure that they make maximum progress. Home and school links are vital in meeting the needs of your child. This can be done in a number of ways including the use of a Home/School Book if necessary and/or regular meetings including parents, the class teacher and SENCo.

Your child's class teacher is always available to offer advice as is Mrs McCallion the SENCo. In some cases we are able to sign post you to specific support groups and agencies that can offer advice and guidance.

During the school year we offer a range of Parent Workshops on a range of subjects. Many of our parents have found these invaluable in helping to support their children at home.

What support will be available for my child's overall well-being?

At THCPS we have an outstanding Pastoral Support Team comprising of Mrs Anders, Mrs Carruthers and Mrs Lynch the Learning Mentor as well as Mrs Ireland and Mrs McCallion who oversee the well-being and pastoral care of all pupils.

The Pastoral Support Team can give advice around a range of areas such as Family Support and Early Intervention, attendance and punctuality and behaviour.

Please contact any of the above if you have any concerns about your child's well-being.

When a child has an identified medical need we work with people such as the School Nurse to create a Health Care plan. Additionally these plans are created to make all relevant staff aware of your child's needs.

Staff take part in specific medical training and a number of staff are trained in First Aid.



What happens if my child has a high level of need?

Mrs McCallion, SENCo, holds a multi-agency meeting at the beginning of each term. Here a number of professional and agencies come along and offer school advice for children with SEN and/or disabilities. These professionals include Mrs Carol Parry, Inclusion Officer for the Local Authority, Educational Psychologist, BIT (Behaviour Improvement Team), LSS (Literacy Support Services), LASC etc.

Through holding these meetings we can ensure that children are receiving the correct level of support. Advice and recommendations from specialist professionals is followed by the SENCo and passed onto class teachers and Learning Assistants.

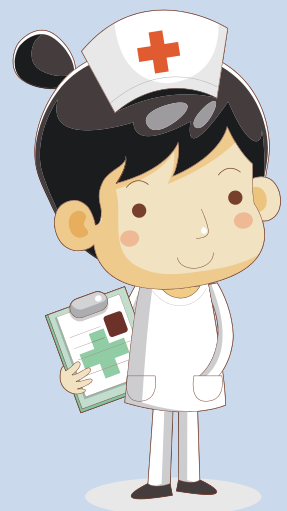
If Mrs McCallion wishes to discuss your child's needs during these meetings your consent will be obtained in advance and any outcomes discussed with you.

We can also seek advice from specialist providers such as Lansbury Bridge school.

What specialist services and expertise are available at this school?

Thatto Heath are fortunate to work with a number of agencies, specialist services and professionals including:

- Parent Partnerships
- Speech therapists
- Occupational therapists
- Physiotherapy
- Social services and Early Intervention
- BIT (Behaviour Improvement Team)
- Educational Psychologist
- School Nurse
- LASC (Language and Social Communication);
- Mrs Carol Parry, Inclusion Officer for the Local Authority;
- Integrated services.



Are the staff who support children with SEND provided with appropriate training?

Mrs Ireland and The Governing Body are committed to ensuring that all staff receive appropriate training in a range of areas. Staff training needs are assessed regularly and training is provided both internally and externally throughout the school year. Where staff work with children with specific needs, for example Autism, specialist advice and training will be given.

Mrs Ireland, Mrs McCallion and other senior members of staff provide on-going support and advice for all staff. We are also a strategic partner in the St Helens Teaching School Alliance which means we can seek advice from other schools in the local area and also offer advice to them.



How will my child be included in activities outside of the classroom including school trips?

We are a fully inclusive school and we strive to ensure that all pupils, regardless of need, have access to a range of activities outside of the classroom including a residential trip in Y6. Where a pupil has a Special Need or a disability extra support may be provided to allow them to access after school clubs and other services such as Breakfast Club.

When a pupil has significant medical or complex SEN then a risk assessment may be completed to ensure their safety and full participation during enrichment activities.



How accessible is the school environment?

Our building is fully wheel-chair accessible. We also have disabled changing and toilet facilities. We seek advice from both the Local Authority and external experts to ensure that we are continually developing the environment to improve accessibility. We also seek advice from specialists to ensure that the environment meets the needs of learners with visual and hearing impairments.

Some children require specialist equipment such as customised chairs, desks and writing equipment. We are fully committed to ensuring that these needs are met. We have a dedicated budget for SEN and Mrs McCallion can order specialist equipment as required.

Our recently installed Computer Science Lab is fully wheelchair accessible.



How will school prepare and support my child when they are starting, leaving or moving to another year?

There are systems in place to ensure that transition to and from schools or within school are as smooth as possible for all pupils.

Where pupils have SEN or a disability additional arrangements can be made as required – with close liaison between staff involved. Some pupils also receive support from agencies such as the Children’s Disability Service and the Behaviour Improvement Team.

We have strong links with our feeder high schools and pupils have a range of opportunities to meet and work with staff from these schools throughout their time at Thatto Heath but particularly in Year 6.

If you have any concerns about transition support please contact Mrs McCallion at school.

What if my child needs transport to and from school?

Occasionally, when there are exceptional circumstances, the Pastoral Support Team can offer support with transport on a short term basis. Should further support be required Mrs Anders and Mrs Carruthers can sign post you to someone you can discuss your needs with in the Local Authority

How are the school's resources allocated and matched to the children's SEN?

Mrs Ireland and The Governing Body have overall responsibility on how the SEN budget is allocated. As SENCo, Mrs McCallion is responsible for ensuring that pupils with additional funding for SEN are supported appropriately and that they make progress towards their target.

Mrs Ireland, The Local Authority and the Governing Body monitor to ensure that the budget is allocated appropriately to ensure all pupils are supported appropriately.

Where specialist equipment and intervention is required school can buy in the services of external agencies and/or specialist resources. We work closely with specialists such as Occupational Therapists and Physiotherapists to seek advice about specialist equipment and resources.

How is the decision made about how much support my child will receive?

The progress of all pupils is monitored and tracked regularly. If your child requires additional support their needs will be assessed and advice will be sought to ensure that appropriate levels of support are implemented.

Parents and pupils (where appropriate) will be involved in any decisions around what additional support is required. Mrs Ireland and Mrs McCallion regularly review support levels and interventions to ensure maximum impact.

If you are unsure how much support your child is receiving please contact Mrs Ireland or Mrs McCallion at school to discuss this.

How will I be involved in discussions about planning for my child's education?

You will have regular opportunities throughout the school year to discuss your child's education with their class teacher and other members of staff as required. We would welcome you into school to discuss any concerns at all that you may have regarding this.

When a child has significant or complex SEN or disabilities regular meetings with both school and other relevant agencies will be arranged. At these meetings you will be fully involved in any decisions regarding your child's education and learning.

Who can I contact for further information?

Initially any concerns you may have or any further information you require should be directed to your child's class teacher.

Additionally you can request a meeting to discuss any issues or concerns you may have with Mrs McCallion (SENCo/Deputy Headteacher) or Mrs Ireland.

Please also contact us if you would like signposting to other agencies/services or to contact our Local Authority Inclusion Officer, Mrs Carol Parry.

Thatto Heath
Community Primary School
'An amazing journey starts here'