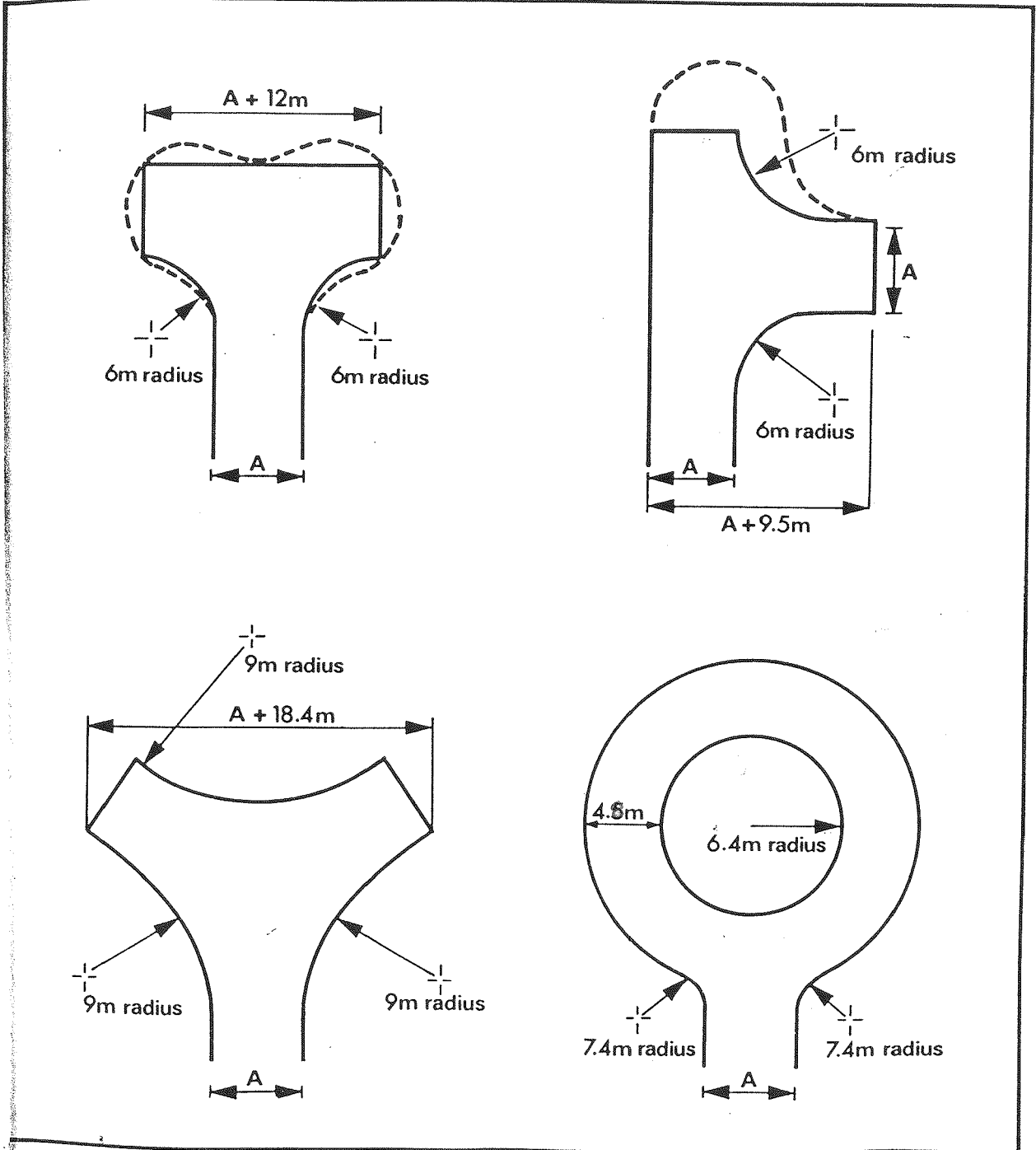


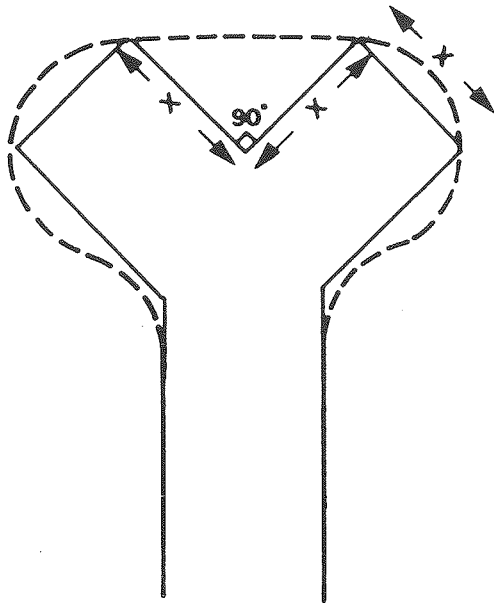
# Turning Heads

Minimum turning head dimensions and typical amorphous examples. 'A' = minimum width for road type, either 5.5 metres or 4.8 metres. Amorphous turning heads are preferred in Type 5A access ways.

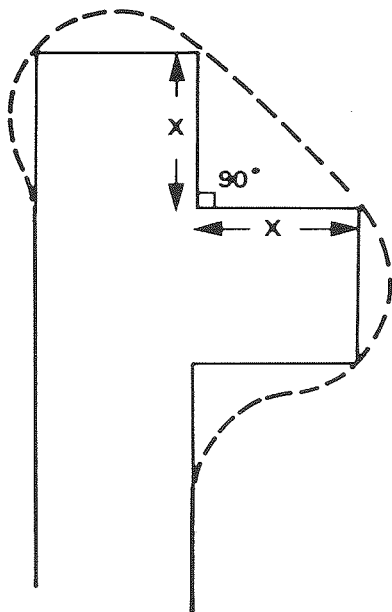
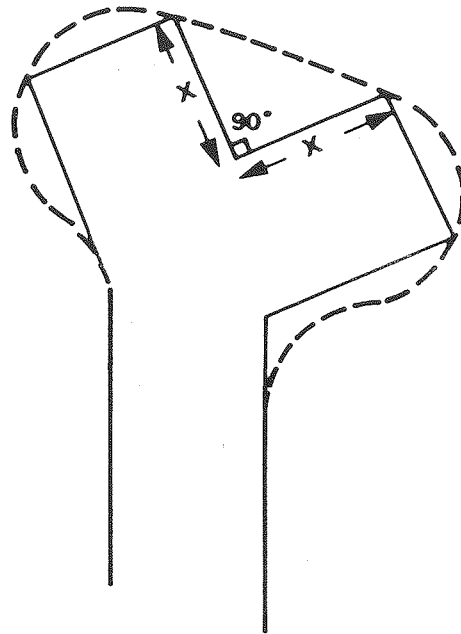
Turning circles are permitted but are not preferred. Careful thought must be given to the central reservation to avoid maintenance problems and damage by over riding.



FOR MAXIMUM OF FIVE DWELLINGS



Max Length 30m  
Min. Length 15m  
 $X = 4.5$



5D ACCESS CORE  
TURNING SPACE  
REQUIREMENTS