

**Site Name:** Mill Wood, Eccleston

**Site Area:** 1.28 hectares      **National Grid Reference:** SJ487955

**Date of Designation:** 1994      **District:** St. Helens

**Date of Last Revision:** December 2003      **SCWI Number:** 70

**CITATION:** One of the few wet broad leaf woodland sites in St. Helens. *Carex riparia* present in its only urban site in the borough. Drainage ditches were dug to enable woodland planting to take place possibly in the early 20<sup>th</sup> century.

**APPRAISAL:** This site has been evaluated against the guidelines approved by the Council in for selection of Local Sites. The site's evaluation against the guidelines is set out below.

Guideline		Comment
<b>HABITATS</b>		
H1;	Rarity	2 priority BAP habitats, 2 priority Habitat Directive habitats; 2 regionally important.
H2;	Diversity	10 habitats recorded.
H3;	Nearness	29 sites within 1 Km.
H4.	Isolation	--
<b>PLANTS</b>		
SP1;	Rarity	1 WCA_SC8 plant species; 1 species of conservation concern; 2 regionally important species.
SP2;	Diversity	Total of 101 plant species. One of 58 sites with 100 or more species.
SP3;	Naturalness	84.2% of the plants are native to the borough. Colonisation has been aided by man and the site has been physically altered.
SP4.	Nationally Rare	--
<b>ANIMALS</b>		
General		
SP5;	Rare/priority	--
Birds		
B1;	Non-breeding population	--
B2;	Breeding population	--
B3;	Regional rare/scare	--
B4;	Breeding assemblage	--
B5.	Assemblage, breeding, wintering, passage.	--
Dragonflies		
Od1.	Breeding	--
Od2.	Regional rare/scarce	--
Butterflies		
Bf1;	Region rare breeding	--
Bf2.	Breeding assemblage	--
Amphibians		
A1;	Rarity	--
A2.	Exceptional populations	--
Reptiles		
R1;	Population of native species	--
R2;	Exceptional population	--
Bats		
Bat1;	Roost	--
Bat2.	Assemblage	--
Mammals		
Mam1.	Breeding	--

SUMMARY: The combination of these factors has led to this site being identified as a Local Site.

NOTE: Validated data from 1981 to July 2003 have been used in this assessment. Other data may become available to support this designation.

**Status of features of nature conservation importance.**

Habitats

**2 Priority BAP habitats** Unimproved neutral grassland  
Swamp

**2 Priority Habitat Directive habitats** Unimproved neutral grassland  
Swamp

**2 Regionally Important habitats  
(North West Biodiversity Audit)** Unimproved neutral grassland  
Swamp

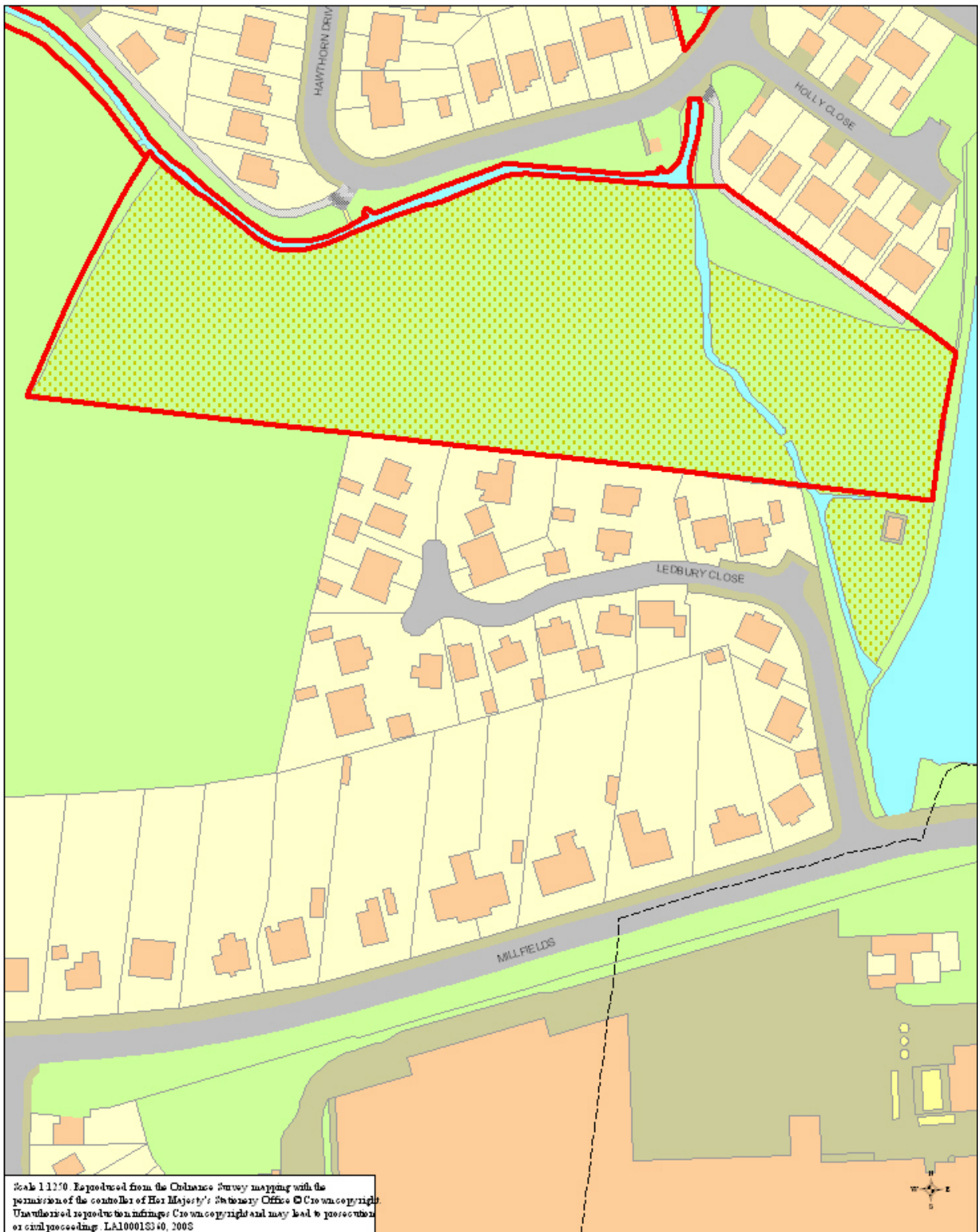
Plants

**1 Wildlife and Countryside Act – Schedule 8 species** English bluebell (*Hyacinthoides non-scripta*)

**1 Species of conservation concern  
(UK Biodiversity Action Plan species)** English bluebell (*Hyacinthoides non-scripta*)

**2 Regionally important species  
(North West Biodiversity Audit)** Greater Pond-sedge (*Carex riparia*)  
English bluebell (*Hyacinthoides non-scripta*)

**2 Locally rare species** Greater Tussock-sedge (*Carex paniculata*)  
Hemlock (*Conium maculatum*)



Scale 1:1250. Reproduced from the Ordnance Survey mapping with the permission of the controller of Her Majesty's Stationery Office © Crown copyright. Use authorized to produce this map; Crown copyright and may lead to prosecution or civil proceedings. LA10001340, 2005



URBAN REGENERATION AND HOUSING DEPARTMENT

Mill Wood, Eccleston

PLANNING SECTION

Date: 22 January 2008

Scale 1:1250

Grid Ref: 348703,395523

Drawn: