

**Site Name:** Woodland beside Old Garswood Railway

**Site Area:** 1.62 hectares      **National Grid Reference:** SJ531981

**Date of Designation:** March 1994      **District:** St. Helens

**Date of Last Revision:** December 2003      **Local Site Number:** 35

**CITATION:** A broadleaf woodland formerly part of Old Garswood Park. The woodland is dominated by oak with a diverse ground flora including English bluebell. Wet and marshy areas provide habitat for a number of locally rare species.

**APPRAISAL:** This site has been evaluated against the guidelines approved by the Council for selection of Local Sites. The site's evaluation against the guidelines is set out below.

Guideline		Comment
<b>HABITATS</b>		
H1;	Rarity	1 priority BAP habitat; 1 priority Habitats Directive habitat; 2 regionally important habitats.
H2;	Diversity	8 habitats recorded.
H3;	Nearness	17 sites within 1Km.
H4.	Isolation	--
<b>PLANTS</b>		
SP1;	Rarity	1 WCA_SC8 plant species; 1 species of conservation concern; 2 regionally important species; 2 locally rare species.
SP2;	Diversity	Total of 109 plant species. One of 58 sites with more than 100 species.
SP3;	Naturalness	91.74% of the plants are native to the borough. Colonisation has been aided by man and the site has been physically altered.
SP4.	Nationally Rare	--
<b>ANIMALS</b>		
General		
SP5;	Rare/priority	--
Birds		
B1;	Non-breeding population	--
B2;	Breeding population	--
B3;	Regional rare/scare	--
B4;	Breeding assemblage	--
B5.	Assemblage, breeding, wintering, passage.	--
Dragonflies		
Od1.	Breeding	--
Od2.	Regional rare/scarce	--
Butterflies		
Bf1;	Region rare breeding	--
Bf2.	Breeding assemblage	--
Amphibians		
A1;	Rarity	--
A2.	Exceptional populations	--
Reptiles		
R1;	Population of native species.	--
R2;	Exceptional population	--
Bats		
Bat1;	Roost	--
Bat2.	Assemblage	--
Mammals		
Mam1.	Breeding	--

SUMMARY: The combination of these factors has led to this site being identified as a Local Site.

NOTE: Validated data from 1981 to December 2003 have been used in this assessment. Other data may become available to support this designation.

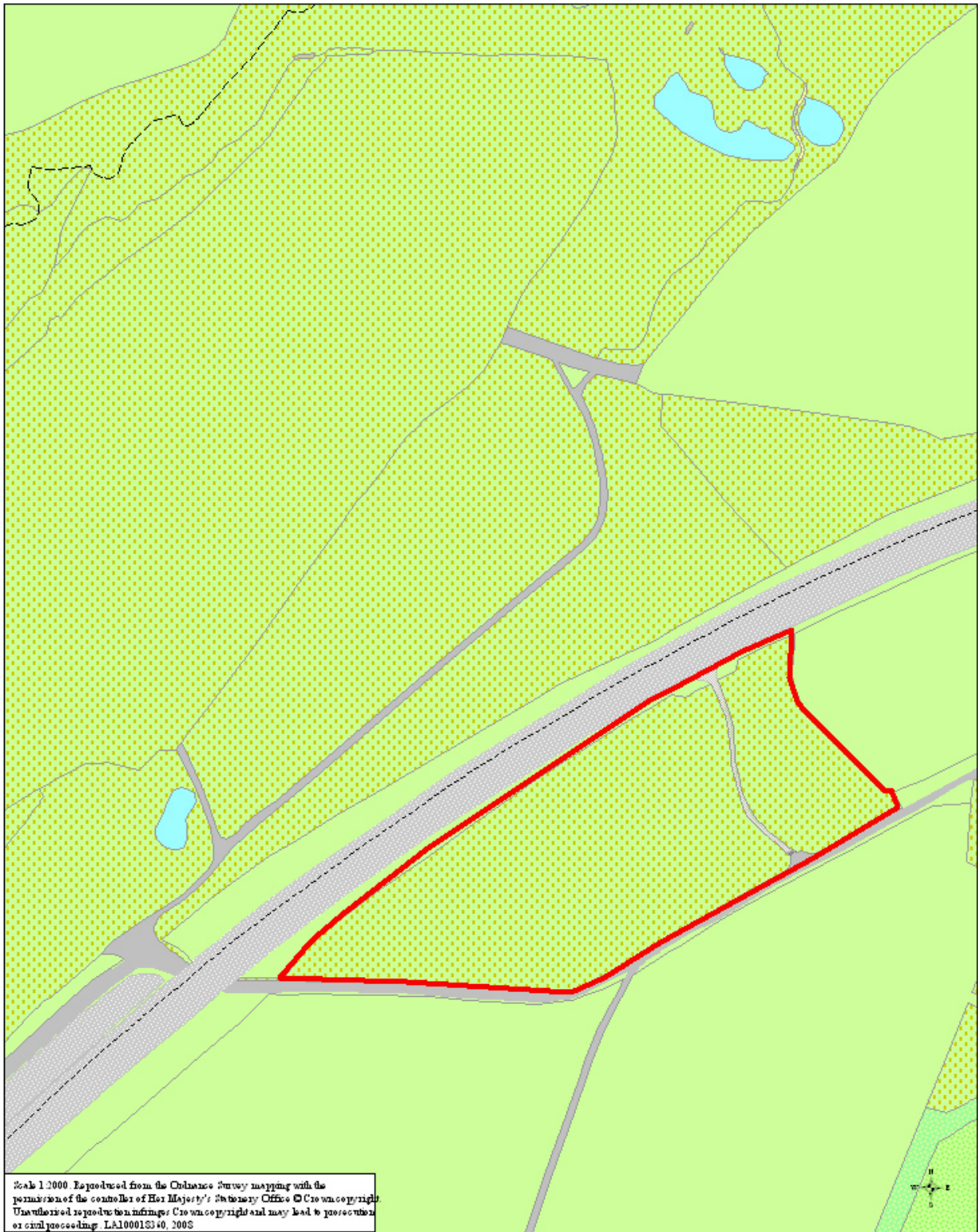
### Status of features of nature conservation importance

#### Habitats

<b>1 Priority BAP habitat</b>	Swamp
<b>1 Priority Habitats Directive habitat</b>	Swamp
<b>2 Regionally important habitats (North West Biodiversity Audit)</b>	Marshy grassland Standing water

#### Plants

<b>1 Wildlife and Countryside Act – Schedule 8 species</b>	English bluebell ( <i>Hyacinthoides non-scripta</i> )
<b>1 Species of conservation concern (UK Biodiversity Action Plan Species)</b>	English bluebell ( <i>Hyacinthoides non-scripta</i> )
<b>2 Regionally important species (North West Biodiversity Audit)</b>	Common comfrey ( <i>Symphytum officinale</i> ) English bluebell ( <i>Hyacinthoides non-scripta</i> )
<b>2 Locally rare species</b>	Bay willow ( <i>Salix pentandra</i> ) Bottle sedge ( <i>Carex rostrata</i> )



URBAN REGENERATION AND HOUSING DEPARTMENT

**Woodland beside Old Garswood Road**

PLANNING SECTION

Date: 23 January 2008

Scale 1:2000

Grid Ref: 353195,398215

Drawn: