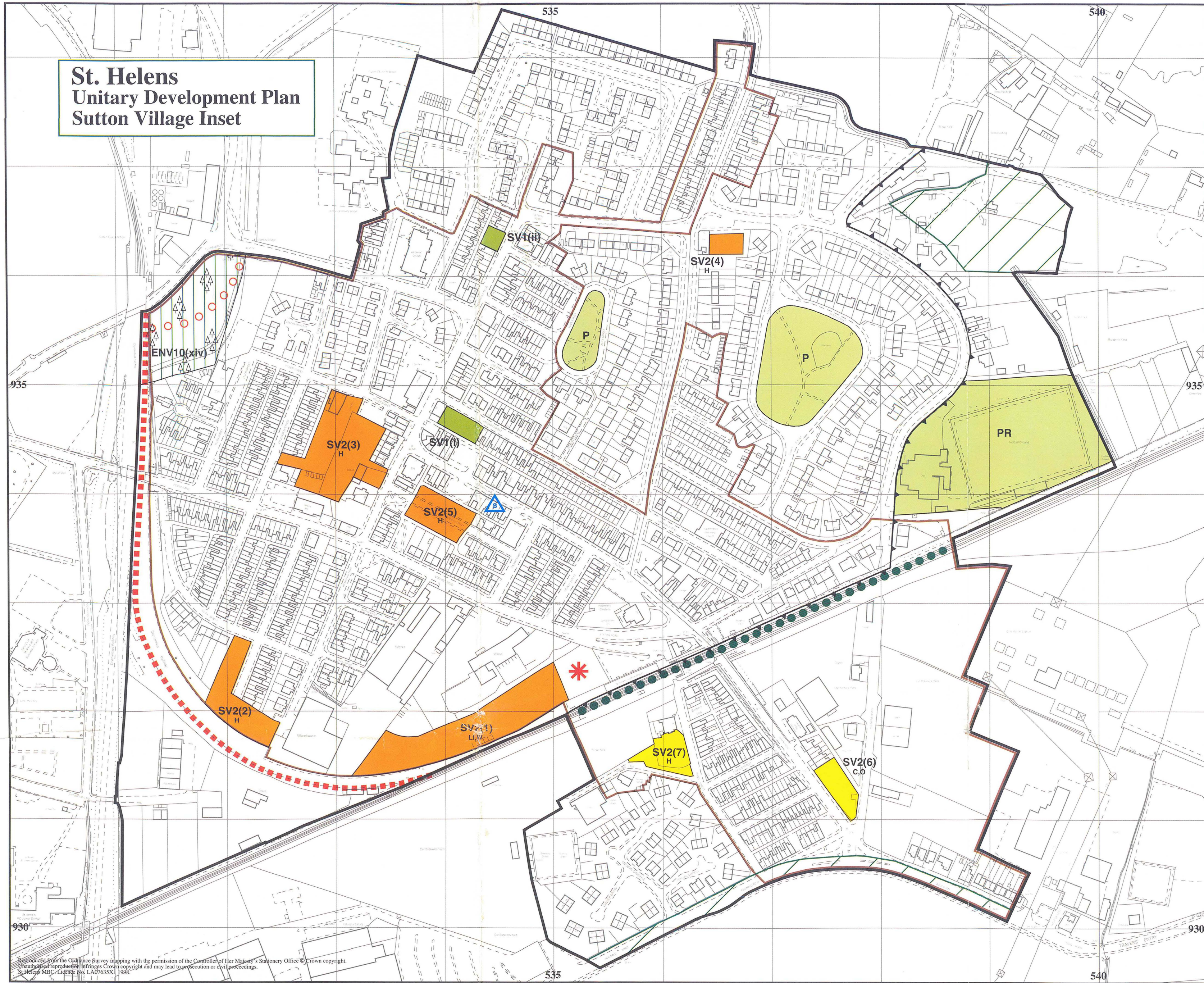
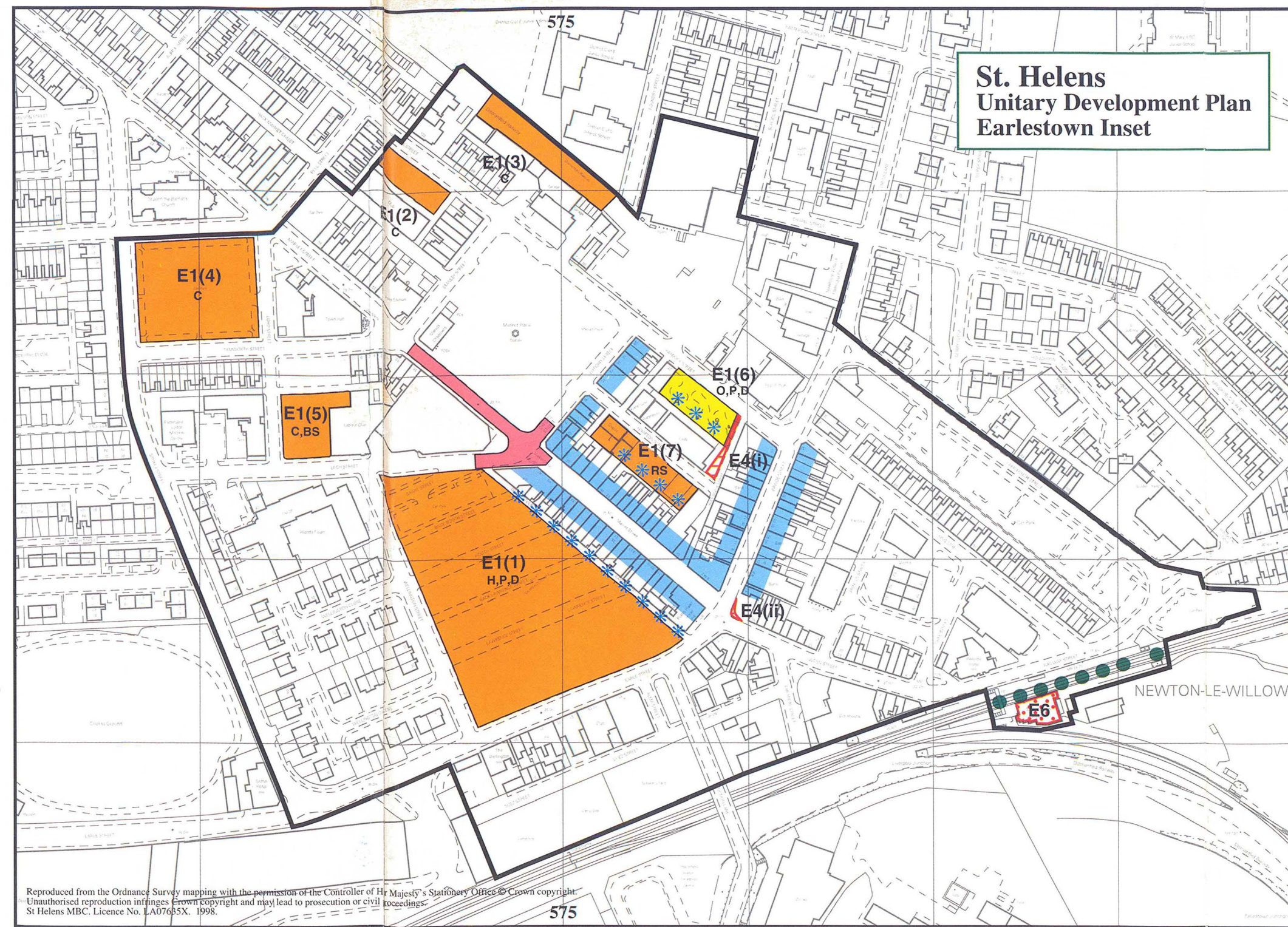


St. Helens  
Unitary Development Plan  
Sutton Village Inset



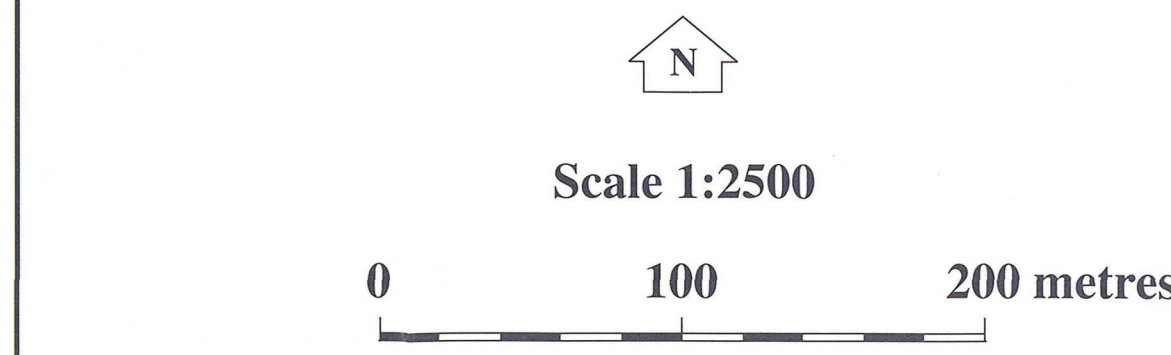
St. Helens  
Unitary Development Plan  
Earlestown Inset



ST. HELENS TOWN CENTRE, SUTTON VILLAGE & EARLESTOWN  
INSET KEY

| POLICIES   |  | POLICIES |  |
|--|--|----------|--|
|  | BOUNDARY OF INSET MAPS                                 |          | PROTECTED REAR SERVICING                                   |
|  | BOUNDARY OF HOUSING RENEWAL AREA                       |          | ENHANCEMENT OF EARLESTOWN STATION BUILDING                 |
|  | GREEN BELT   |          | CLOSURE OF CHALON WAY                                      |
|  | PRIME SHOPPING AREA                                    |          | PROPOSED RAIL/BUS INTERCHANGE                              |
|  | CENTRAL SHOPPING AREA                                  |          | CENTRAL/JUNCTION RAIL LINK                                 |
|  | SHOPPING CENTRE  |          | STRATEGIC FOOTPATH & CYCLEWAY                              |
|  | DEVELOPMENT SITES                                      |          | VICTORIA SQUARE CONSERVATION AREA                          |
| BS Bus Station C Car Park CU Community Use W Warehousing |  |          | STREETS/BUILDINGS TO BE PROTECTED                          |
| D Food & Drink H Housing L Leisure S Shopping            |  |          | EXISTING OPEN SPACE  |
| O Offices P Financial & Professional RS Rear Servicing   |  |          | PROPOSED OPEN SPACE  |
| OS Open Space GI General Industry LI Light Industry      |  |          | GREENWAY   |
|  | DEVELOPMENT SITE WITH PLANNING PERMISSION E1, SV2, TC4 |          | MERSEY FOREST  |
|  | BUSINESS AREA TC3                                      |          | ENVIRONMENTAL IMPROVEMENTS WITHIN TRANSPORTATION CORRIDORS |
|  | STRATEGIC HIGHWAY NETWORK                              |          | LANDSCAPE RENEWAL  |
|  | PROPOSED PEDESTRIANISATION E3, TC10                    |          |  |
|  | PROPOSED HIGHWAY IMPROVEMENTS E4                       |          |  |

The following Inset Policies also apply but are not shown on the Inset Maps :- TC2(b), TC5, TC9, TC11, TC12



ST. HELENS TOWN CENTRE INSET  
TRAFFIC MANAGEMENT DIAGRAM

|  |   |
|--|---|
|  | STRATEGIC THROUGH ROUTE                     |
|  | ACCESS TRAFFIC                              |
|  | TRAFFIC FLOWS                               |
|  | BUS ONLY FLOWS                              |
|  | EXISTING PUBLIC CAR PARK                    |
|  | ATLAS STREET IMPROVEMENT                    |
|  | RAILWAY STATION                             |
|  | EXISTING PEDESTRIANISATION                  |
|  | PROPOSED PEDESTRIANISATION                  |
|  | RESIDENTIAL AREA FOR RESTRICTED ACCESS ONLY |
|  | DESIRED PEDESTRIANISATION IMPROVEMENTS      |
|  | CAR PARK AREA PROPOSED FOR DEVELOPMENT      |