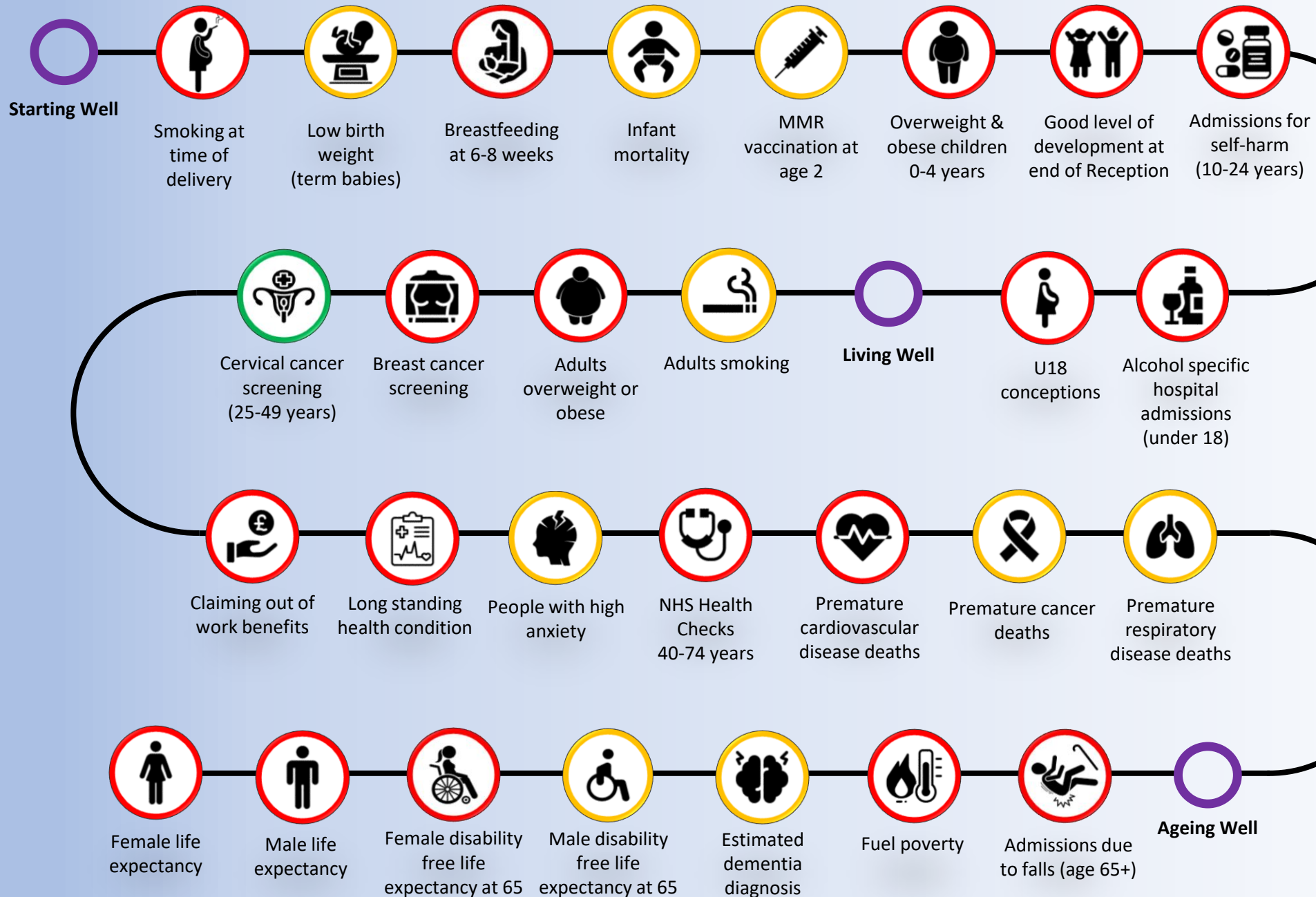


# St Helens Local Authority Life Course Statistics: 2023

A comparison to England



The life course map demonstrates the key points throughout life in which health is affected. For each event, St Helens rates are compared to the England average to provide a snapshot of the health of the population at various stages of life.

## Additional St Helens Facts

**Population:**  
About **183,200** people live in St Helens.

**Deprivation:**  
**43%** of the St Helens population live in the top **20%** most deprived areas in England.

**Childhood poverty:**  
**14.1%** of children under 16 live in absolute low income families (15.3% in England).

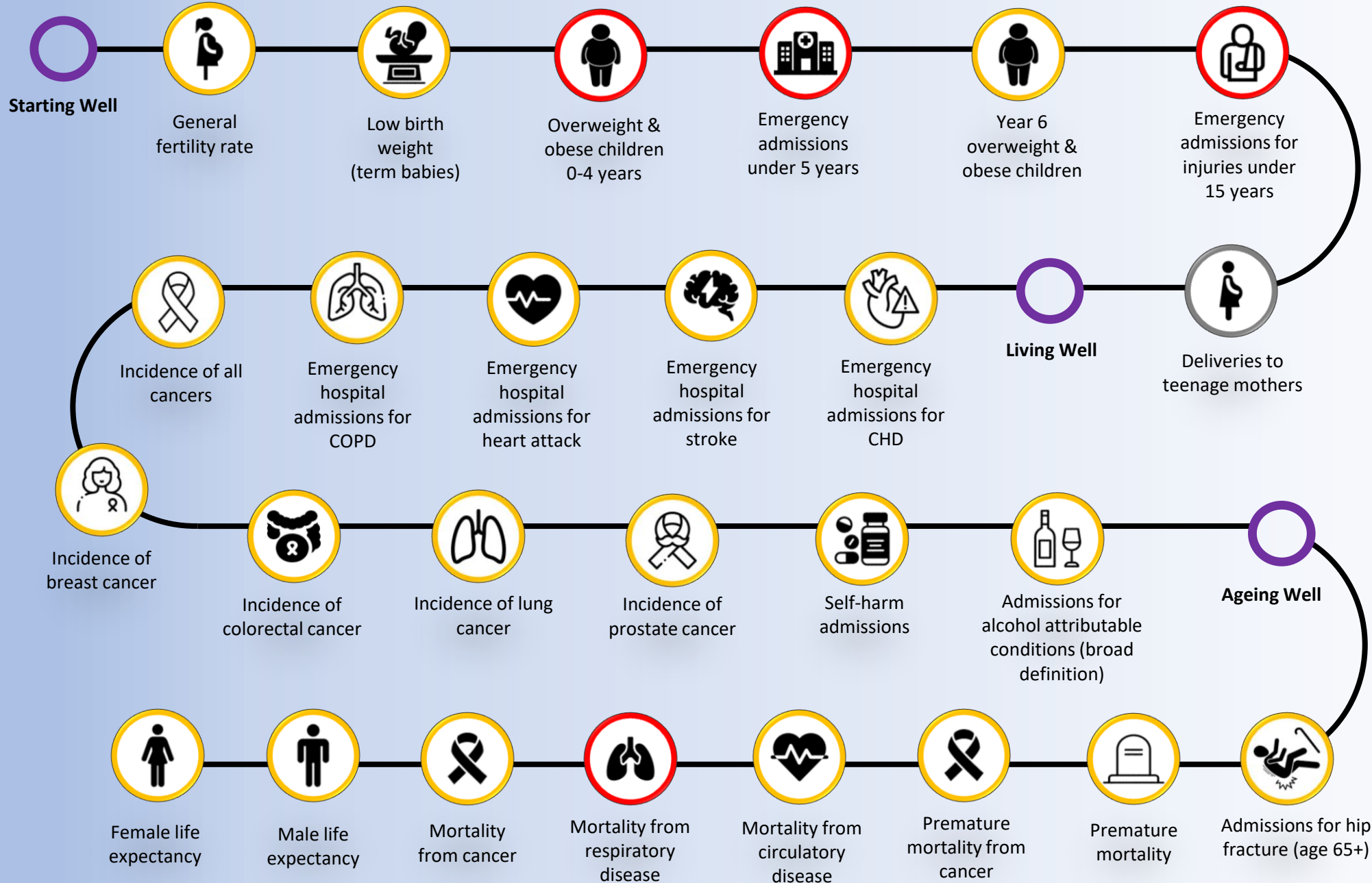
## Key

**Statistical significance to England**

- Better
- No Difference
- Worse

# Ward Life Course Statistics 2023: Billinge and Seneley Green

A comparison to England



The life course map demonstrates the key points throughout life in which health is affected. For each event, Billinge and Seneley Green rates are compared to the England average to provide a snapshot of the health of the population at various stages of life.

## Additional Billinge and Seneley Green Facts

**Population:**  
About **10,300** people live in Billinge and Seneley Green

**Child poverty:**  
**12.5%** of children aged 0-15 in Billinge and Seneley Green live in income deprived families.

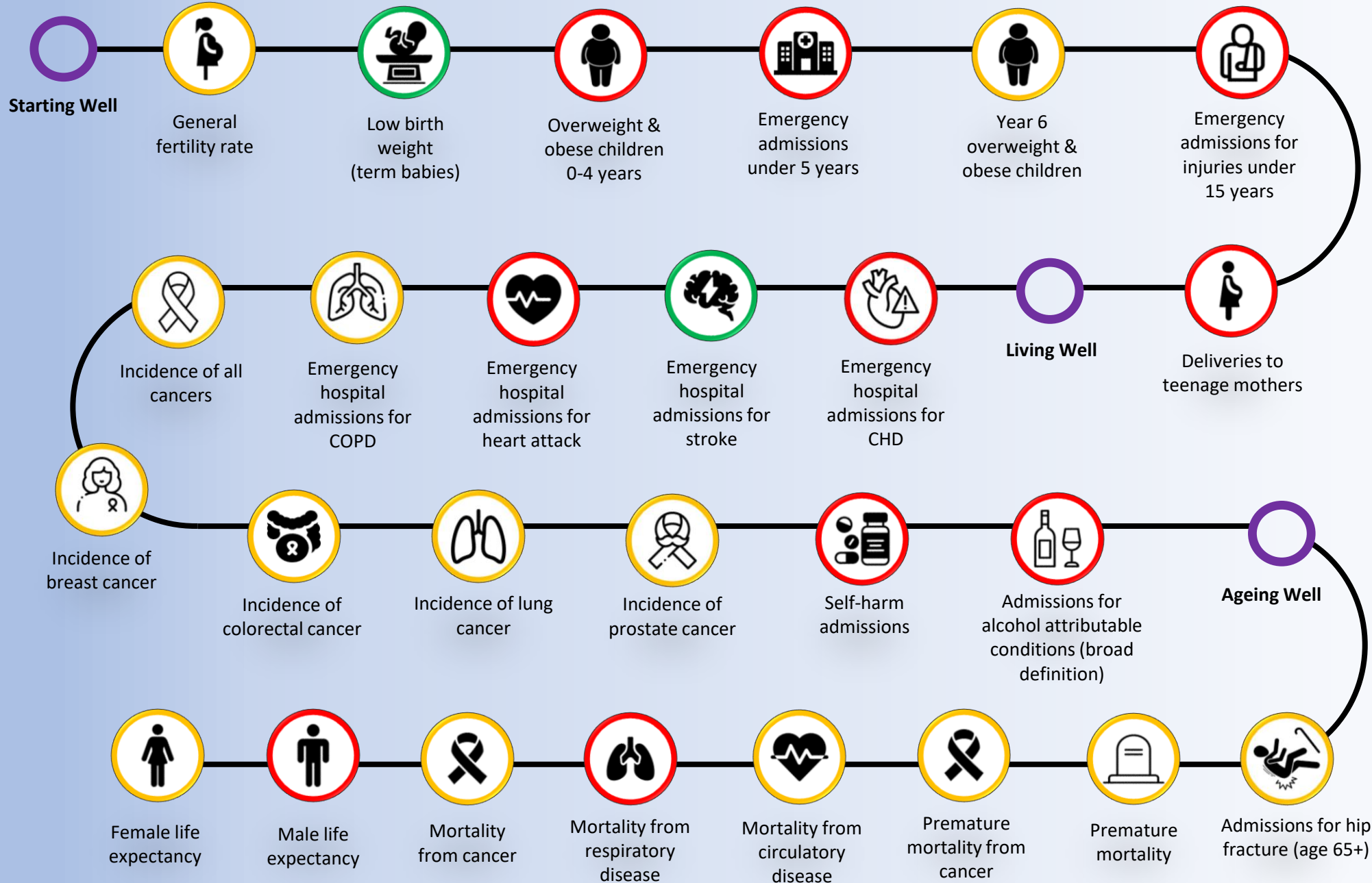
## Key

**Statistical significance to England**

- Better
- No Difference
- Worse
- Unavailable

# Ward Life Course Statistics 2023: Blackbrook

A comparison to England



The life course map demonstrates the key points throughout life in which health is affected. For each event, Blackbrook rates are compared to the England average to provide a snapshot of the health of the population at various stages of life.

## Additional Blackbrook Facts

**Population:**  
About **10,100** people live in Blackbrook.

**Child poverty:**  
**20.6%** of children aged 0-15 in Blackbrook live in income deprived families.

## Key

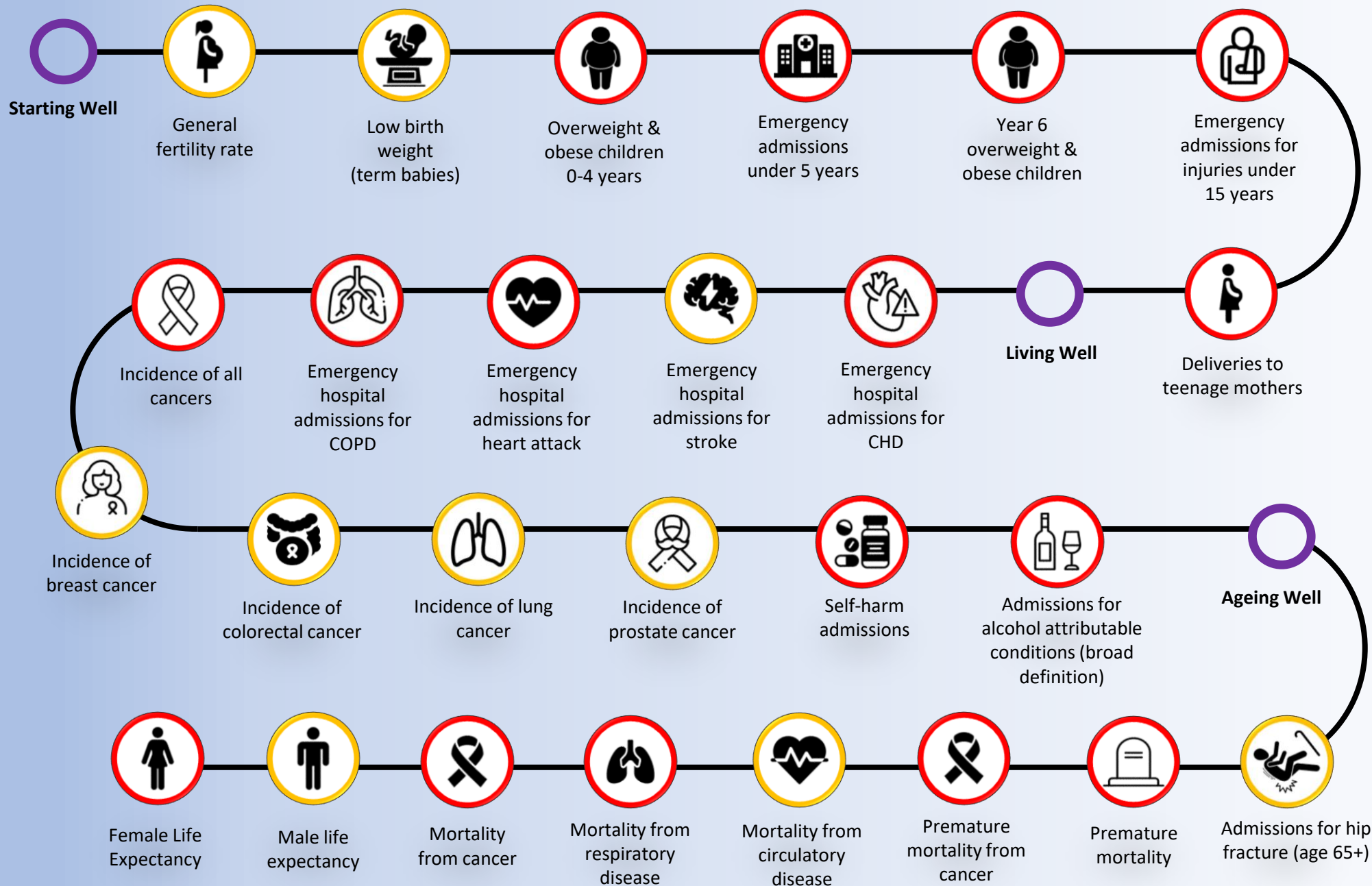
**Statistical significance to England**

- Better
- No Difference
- Worse
- Unavailable



# Ward Life Course Statistics 2023: Bold

A comparison to England



The life course map demonstrates the key points throughout life in which health is affected. For each event, Bold rates are compared to the England average to provide a snapshot of the health of the population at various stages of life.

## Additional Bold Facts

**Population:**  
About **9,900** people live in Bold

**Child poverty:**  
**33.2%** of children aged 0-15 in Bold live in income deprived families.

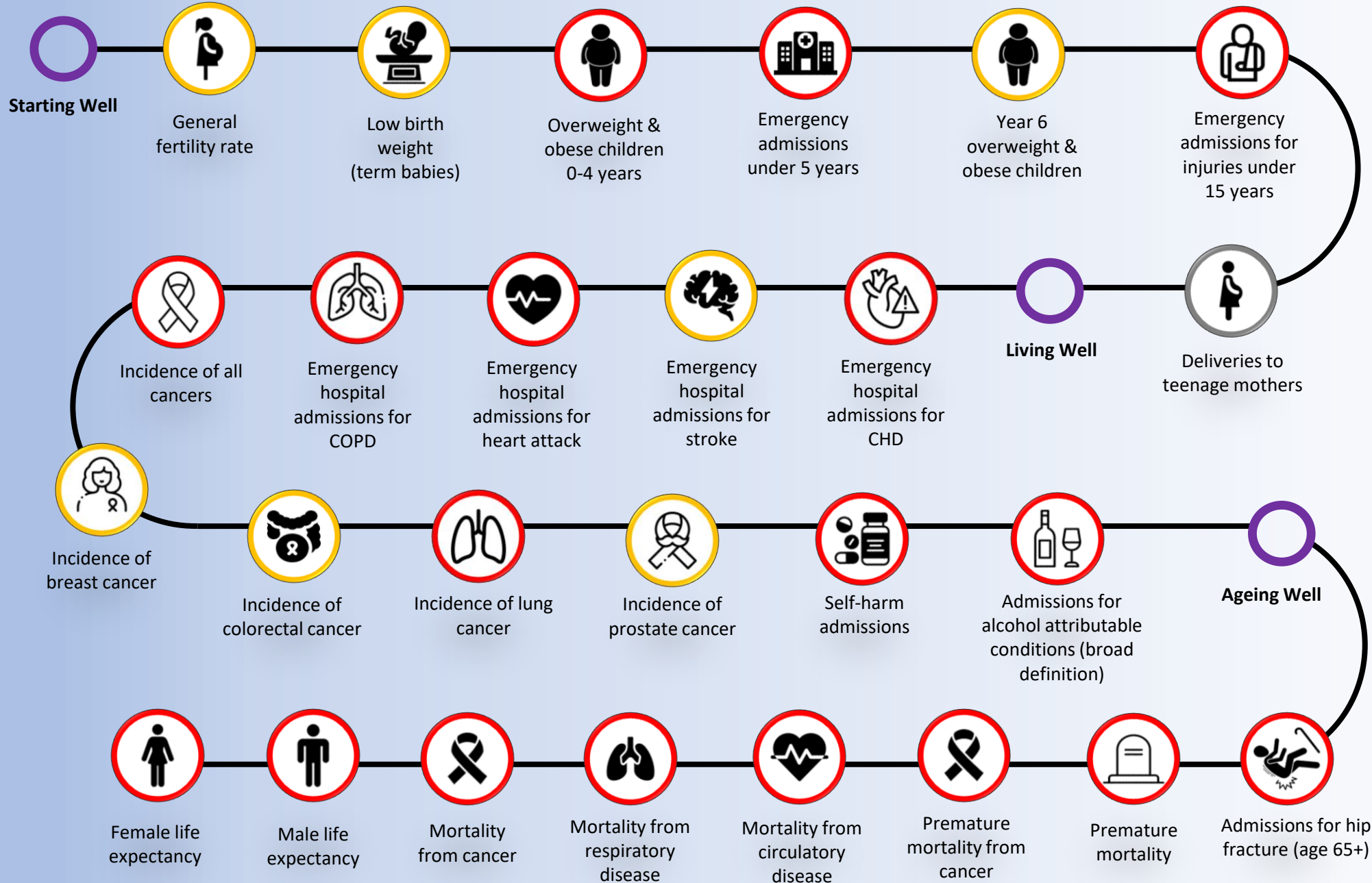
## Key

**Statistical significance to England**

- Better
- No Difference
- Worse
- Unavailable

# Ward Life Course Statistics 2023: Earlestown

A comparison to England



The life course map demonstrates the key points throughout life in which health is affected. For each event, Earlestown rates are compared to the England average to provide a snapshot of the health of the population at various stages of life.

## Additional Earlestown Facts

**Population:**  
About **12,200** people live in Earlestown

**Child poverty:**  
**25.3%** of children aged 0-15 in Earlestown live in income deprived families.

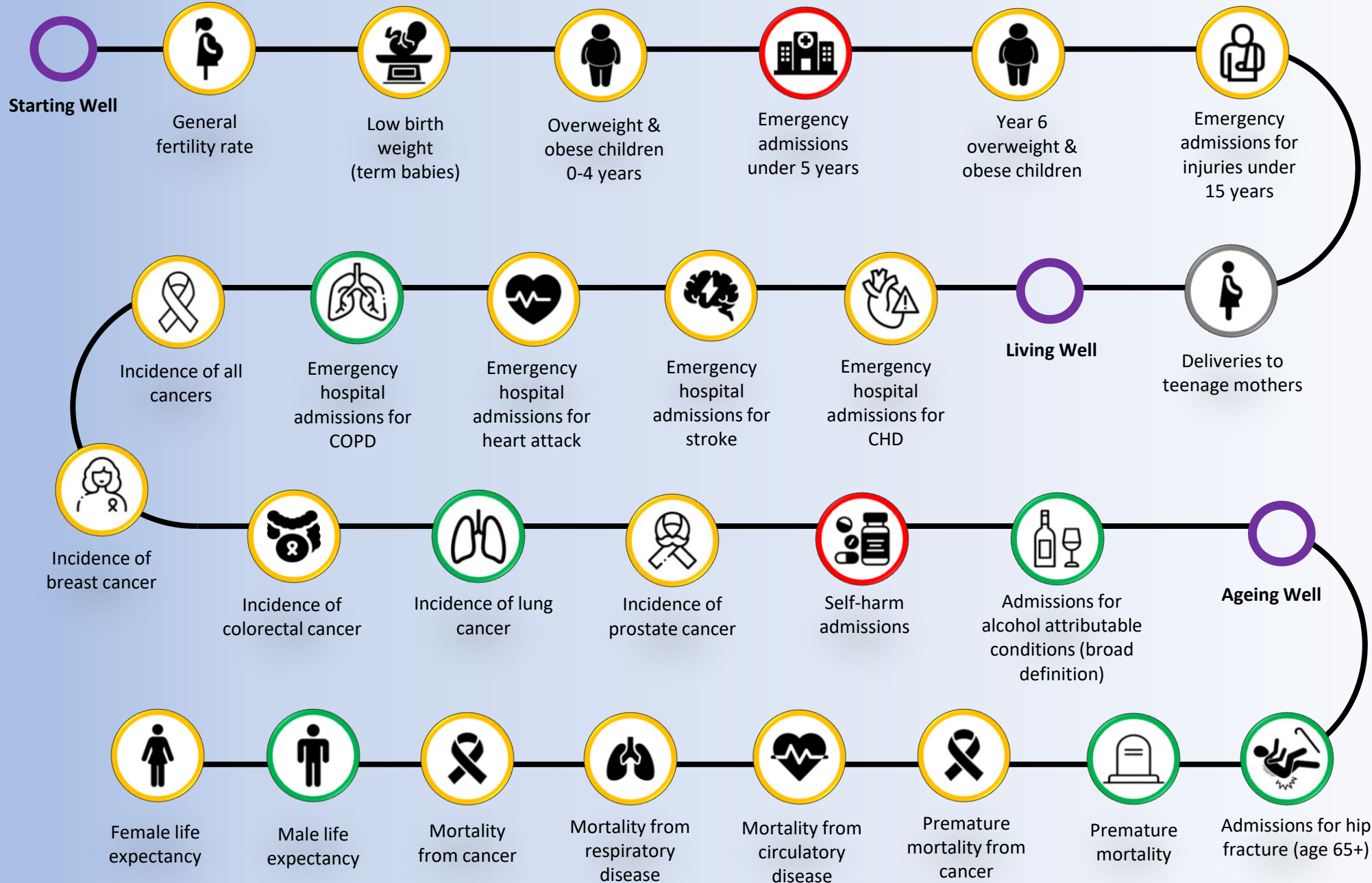
## Key

**Statistical significance to England**

- Better
- No Difference
- Worse
- Unavailable

# Ward Life Course Statistics 2023: Ecclestone

A comparison to England



The life course map demonstrates the key points throughout life in which health is affected. For each event, Ecclestone rates are compared to the England average to provide a snapshot of the health of the population at various stages of life.

## Additional Ecclestone Facts

**Population:**  
About **11,800** people live in Ecclestone

**Child poverty:**  
**6.6%** of children aged 0-15 in Ecclestone live in income deprived families.

## Key

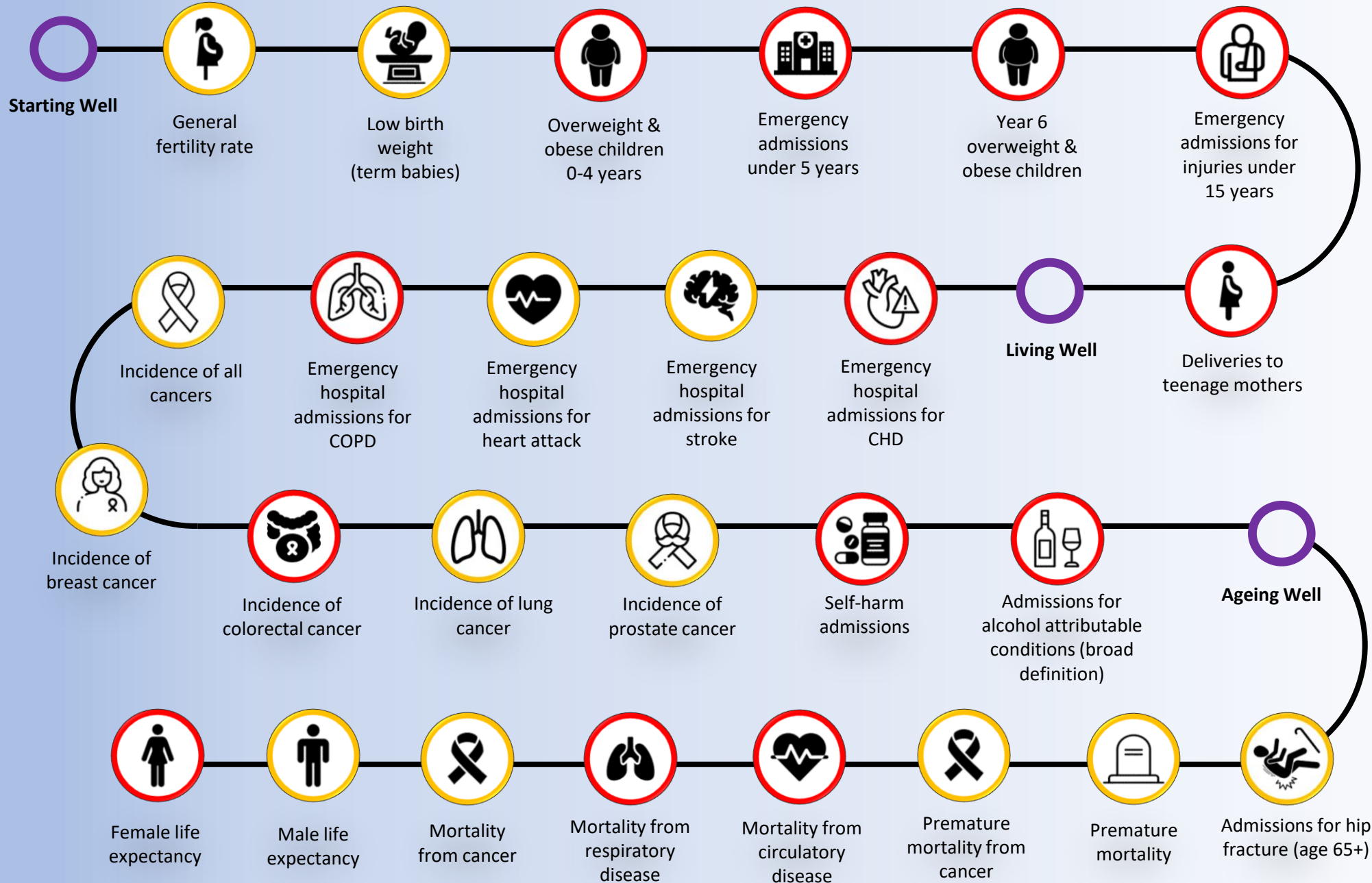
**Statistical significance to England**

- Better
- No Difference
- Worse
- Unavailable



# Ward Life Course Statistics 2023: Haydock

A comparison to England



The life course map demonstrates the key points throughout life in which health is affected. For each event, Haydock rates are compared to the England average to provide a snapshot of the health of the population at various stages of life.

## Additional Haydock Facts

**Population:**  
About **11,300** people live in Haydock

**Child poverty:**  
**20.2%** of children aged 0-15 in Haydock live in income deprived families.

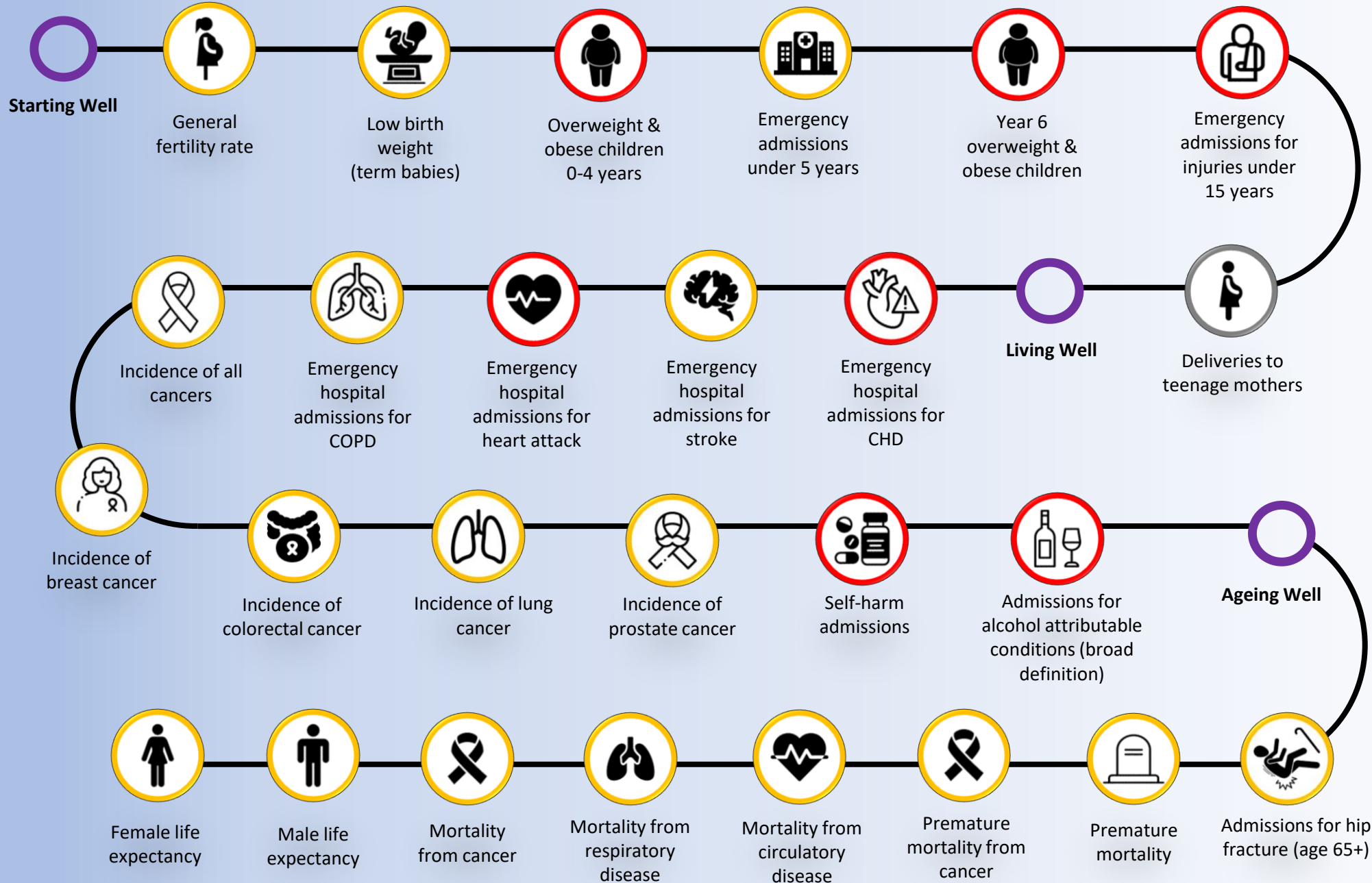
## Key

**Statistical significance to England**

- Better
- No Difference
- Worse
- Unavailable

# Ward Life Course Statistics 2023: Moss Bank

A comparison to England



The life course map demonstrates the key points throughout life in which health is affected. For each event, Moss Bank rates are compared to the England average to provide a snapshot of the health of the population at various stages of life.

**Additional Moss Bank Facts**

**Population:** About **11,000** people live in Moss Bank

**Child poverty:** **23.1%** of children aged 0-15 in Moss Bank live in income deprived families.

**Key**

**Statistical significance to England**

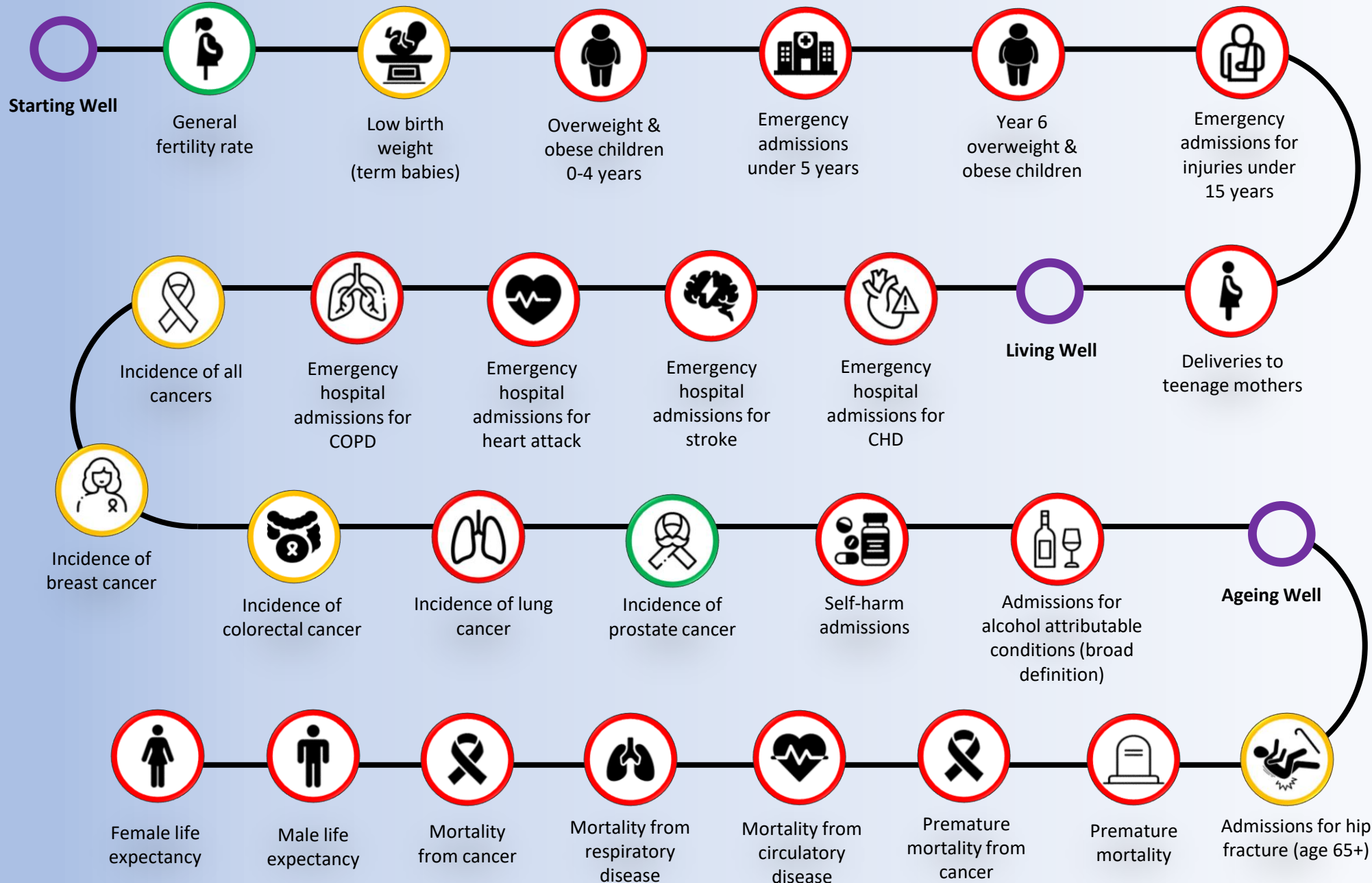
- Better
- No Difference
- Worse
- Unavailable





# Ward Life Course Statistics 2023: Parr

A comparison to England



The life course map demonstrates the key points throughout life in which health is affected. For each event, Parr rates are compared to the England average to provide a snapshot of the health of the population at various stages of life.

## Additional Parr Facts

**Population:**  
About **13,500** people live in Parr

**Child poverty:**  
**39.5%** of children aged 0-15 in Parr live in income deprived families.

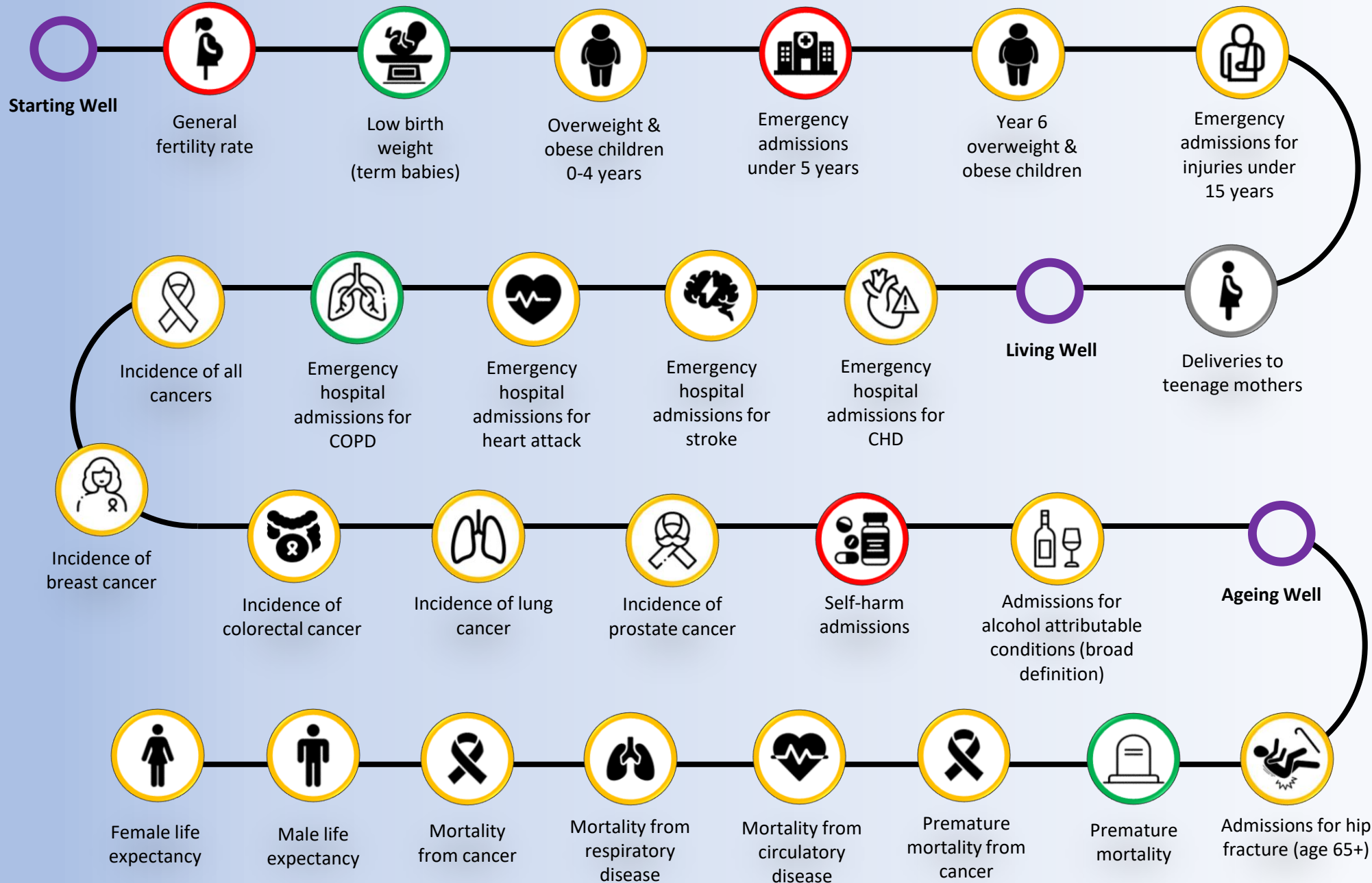
## Key

**Statistical significance to England**

- Better
- No Difference
- Worse
- Unavailable

# Ward Life Course Statistics 2023: Rainford

A comparison to England



The life course map demonstrates the key points throughout life in which health is affected. For each event, Rainford rates are compared to the England average to provide a snapshot of the health of the population at various stages of life.

## Additional Rainford Facts

**Population:**  
About **7,600** people live in Rainford

**Child poverty:**  
**7.3%** of children aged 0-15 in Rainford live in income deprived families.

## Key

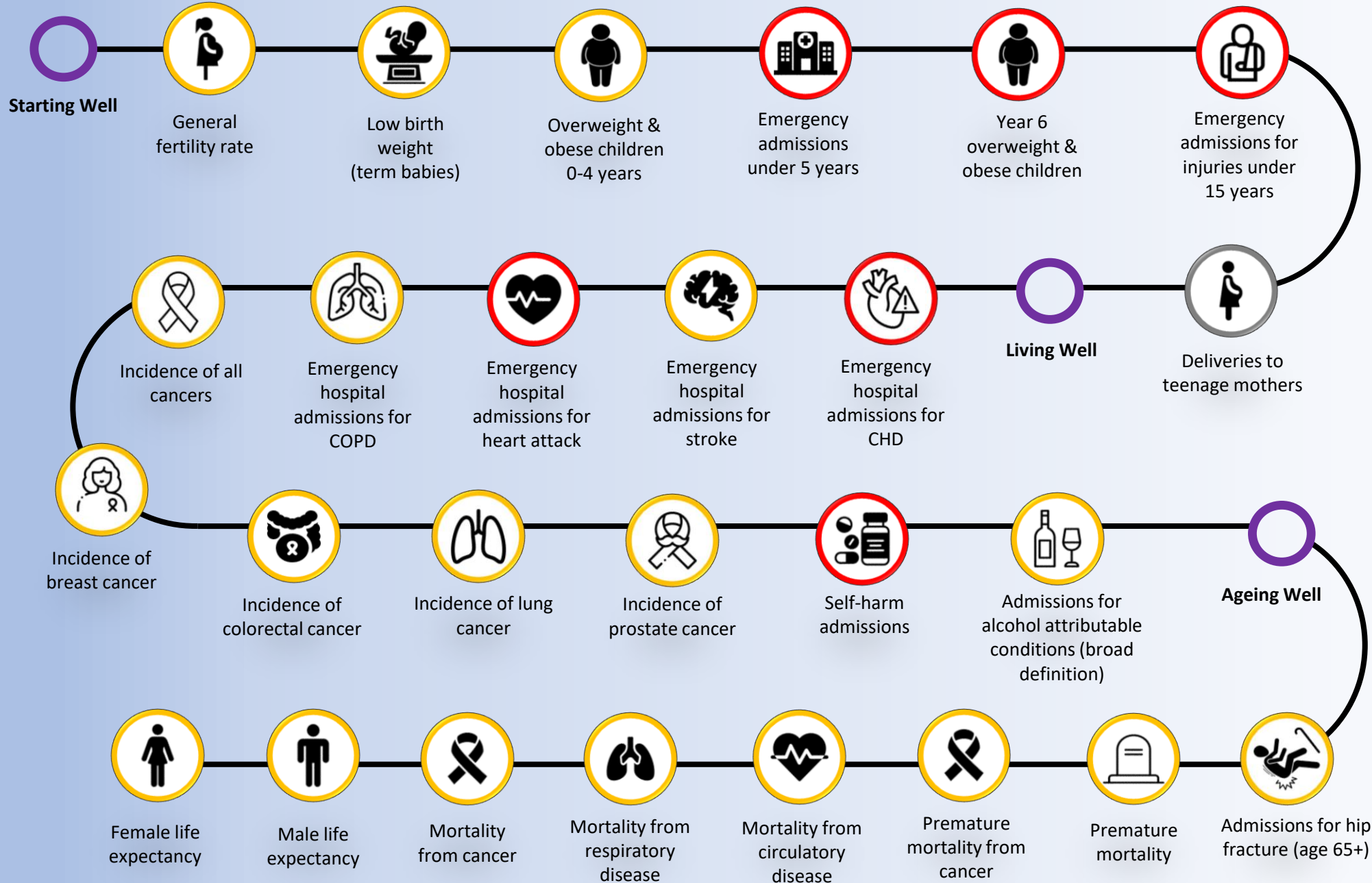
**Statistical significance to England**

- Better
- No Difference
- Worse
- Unavailable



# Ward Life Course Statistics 2023: Rainhill

A comparison to England



The life course map demonstrates the key points throughout life in which health is affected. For each event, Rainhill rates are compared to the England average to provide a snapshot of the health of the population at various stages of life.

## Additional Rainhill Facts

**Population:** About **10,800** people live in Rainhill

**Child poverty:** **11.3%** of children aged 0-15 in Rainhill live in income deprived families.

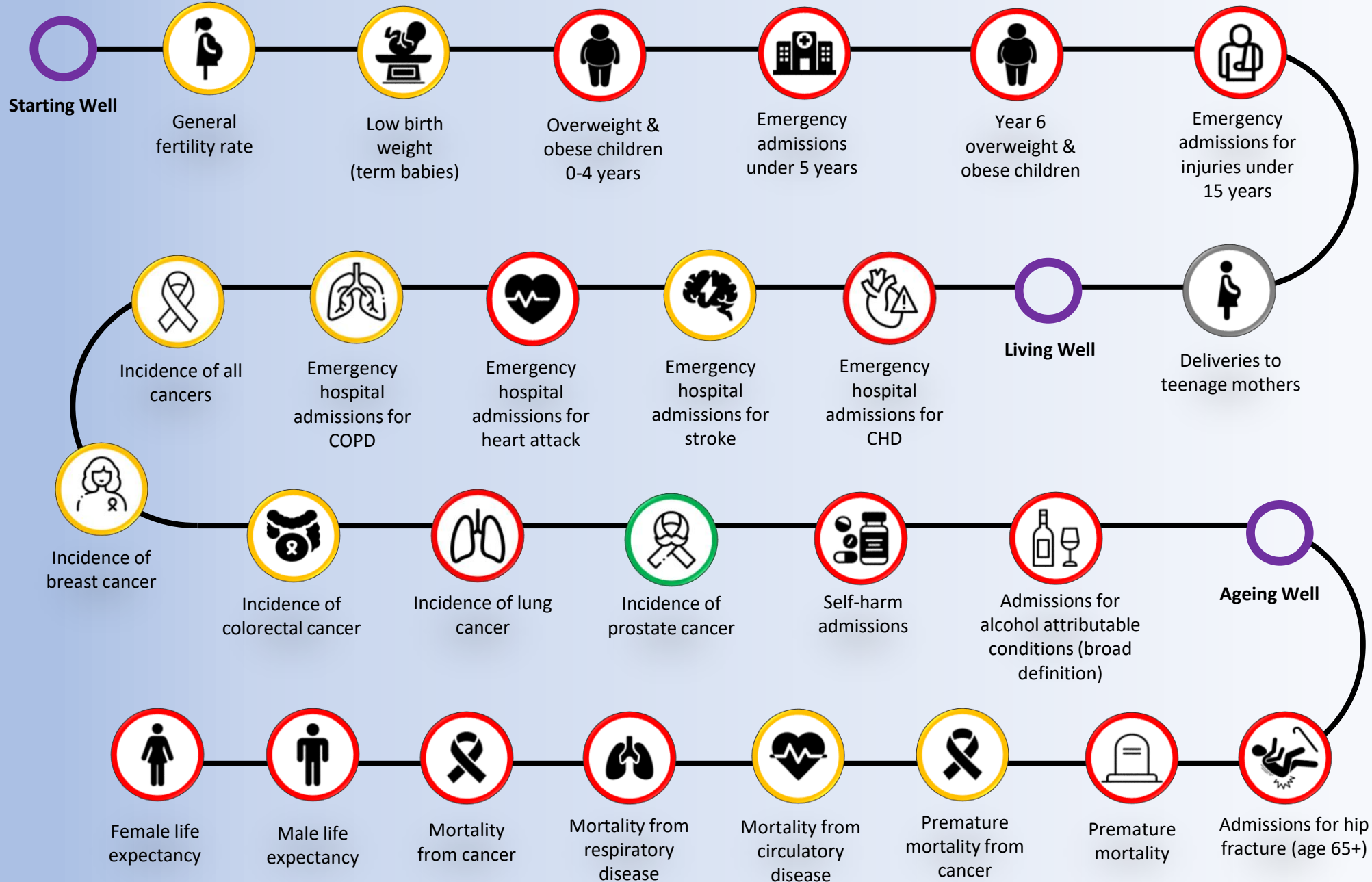
## Key

**Statistical significance to England**

- Better
- No Difference
- Worse
- Unavailable

# Ward Life Course Statistics 2023: Sutton

A comparison to England



The life course map demonstrates the key points throughout life in which health is affected. For each event, Sutton rates are compared to the England average to provide a snapshot of the health of the population at various stages of life.

## Additional Sutton Facts

**Population:**  
About **11,800** people live in Sutton

**Child poverty:**  
**28.1%** of children aged 0-15 in Sutton live in income deprived families.

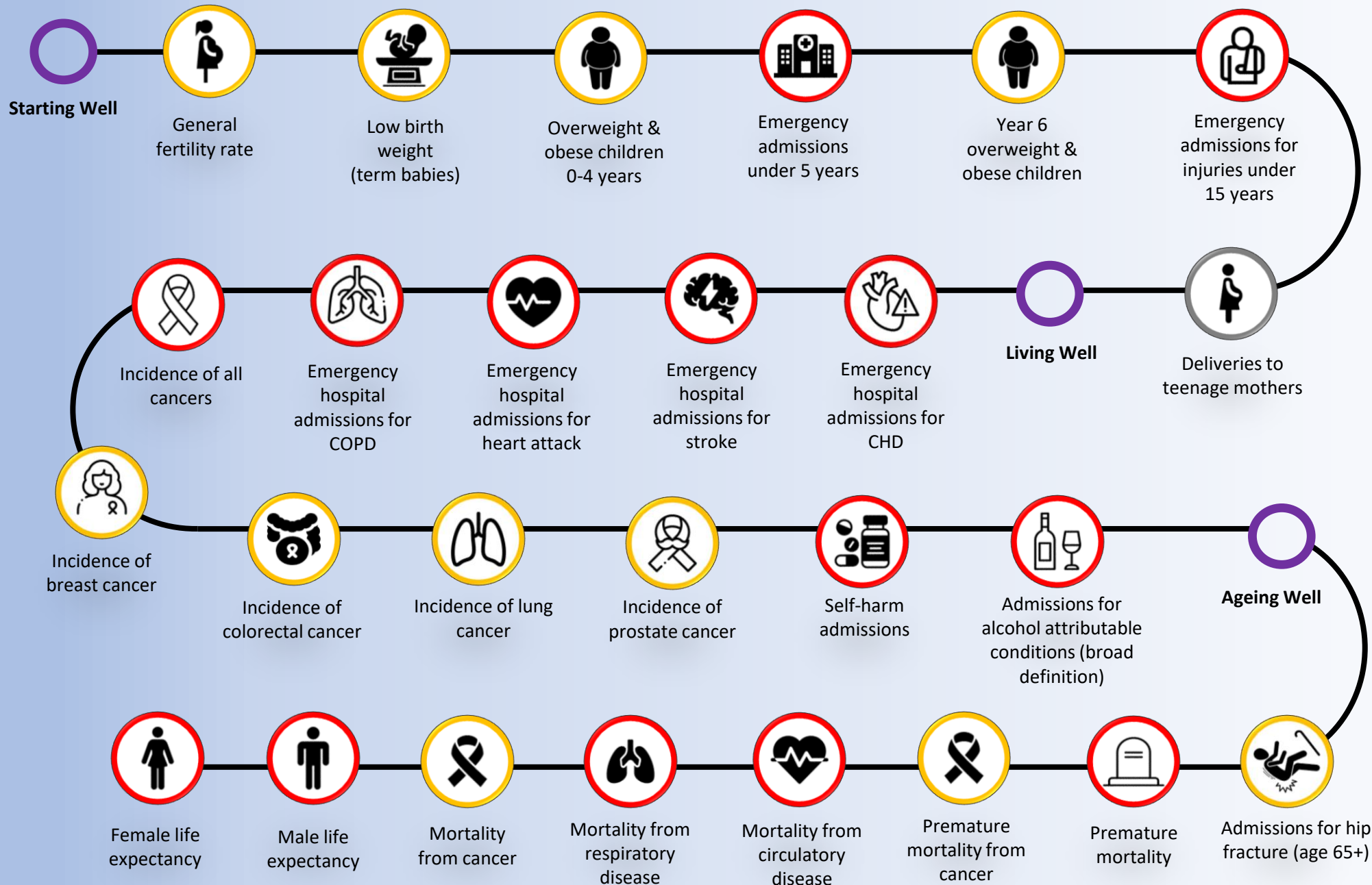
## Key

**Statistical significance to England**

- Better
- No Difference
- Worse
- Unavailable

# Ward Life Course Statistics 2023: Thatto Heath

A comparison to England



The life course map demonstrates the key points throughout life in which health is affected. For each event, Thatto Heath rates are compared to the England average to provide a snapshot of the health of the population at various stages of life.

## Additional Thatto Heath Facts

**Population:**  
About **13,300** people live in Thatto Heath

**Child poverty:**  
**23.6%** of children aged 0-15 in Thatto Heath live in income deprived families.

## Key

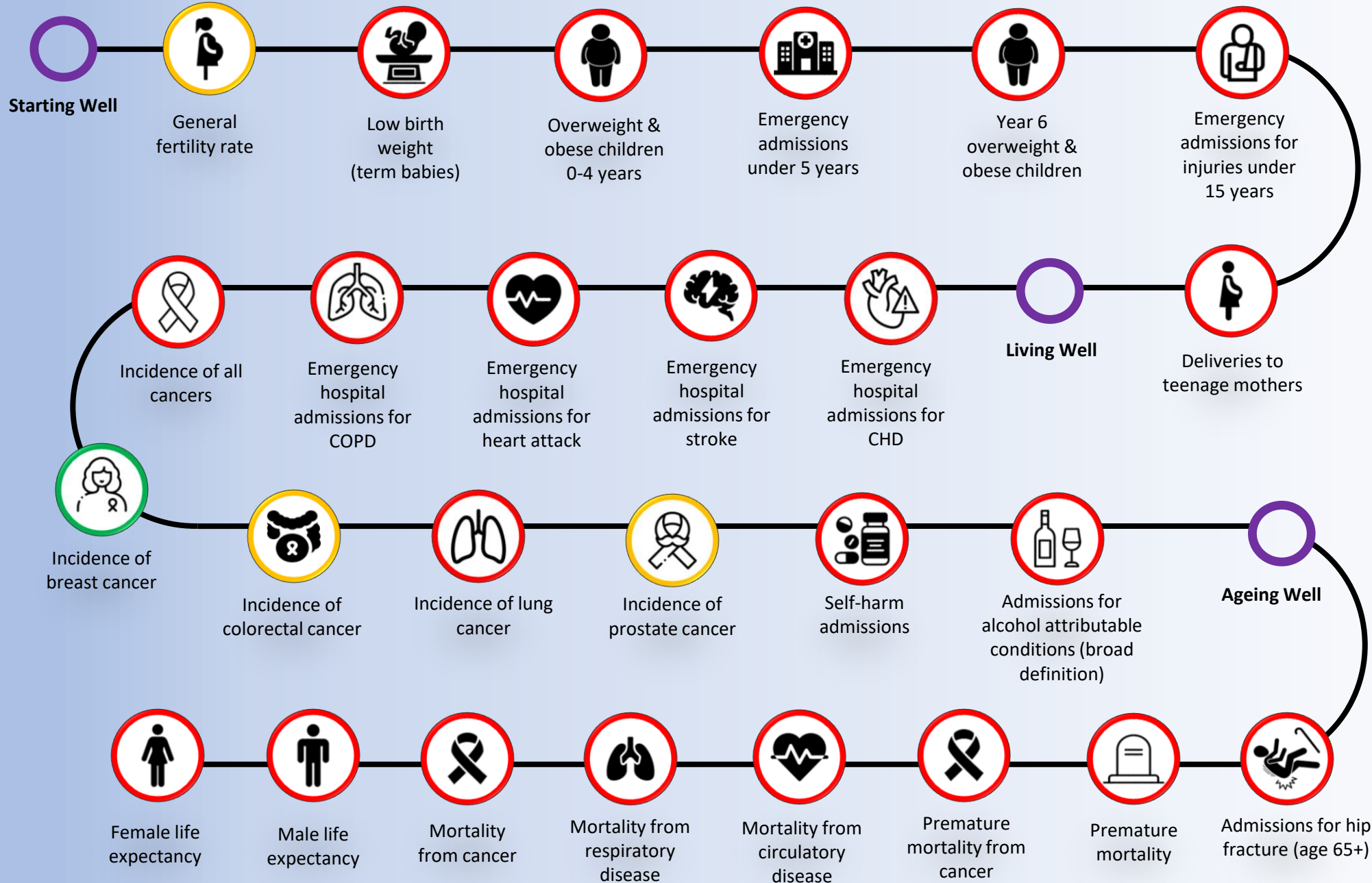
**Statistical significance to England**

- Better
- No Difference
- Worse
- Unavailable



# Ward Life Course Statistics 2023: Town Centre

A comparison to England



The life course map demonstrates the key points throughout life in which health is affected. For each event, Town Centre rates are compared to the England average to provide a snapshot of the health of the population at various stages of life.

## Additional Town Centre Facts

**Population:**  
About **11,600** people live in Town Centre

**Child poverty:**  
**36.8%** of children aged 0-15 in Town Centre live in income deprived families.

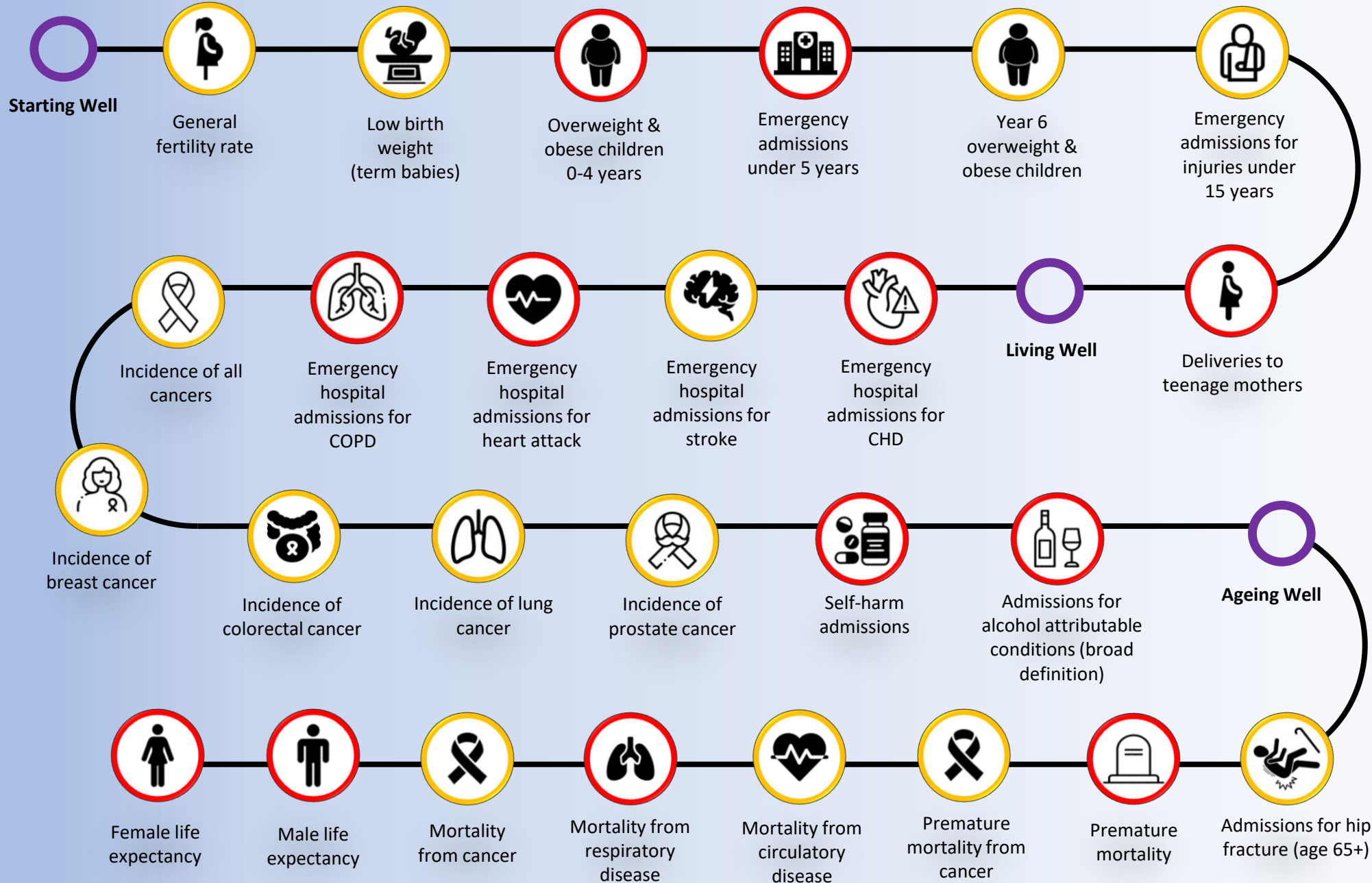
## Key

**Statistical significance to England**

- Better
- No Difference
- Worse
- Unavailable

# Ward Life Course Statistics 2023: West Park

A comparison to England



The life course map demonstrates the key points throughout life in which health is affected. For each event, West Park rates are compared to the England average to provide a snapshot of the health of the population at various stages of life.

## Additional West Park Facts

**Population:**  
About **11,400** people live in West Park

**Child poverty:**  
**23.2%** of children aged 0-15 in West Park live in income deprived families.

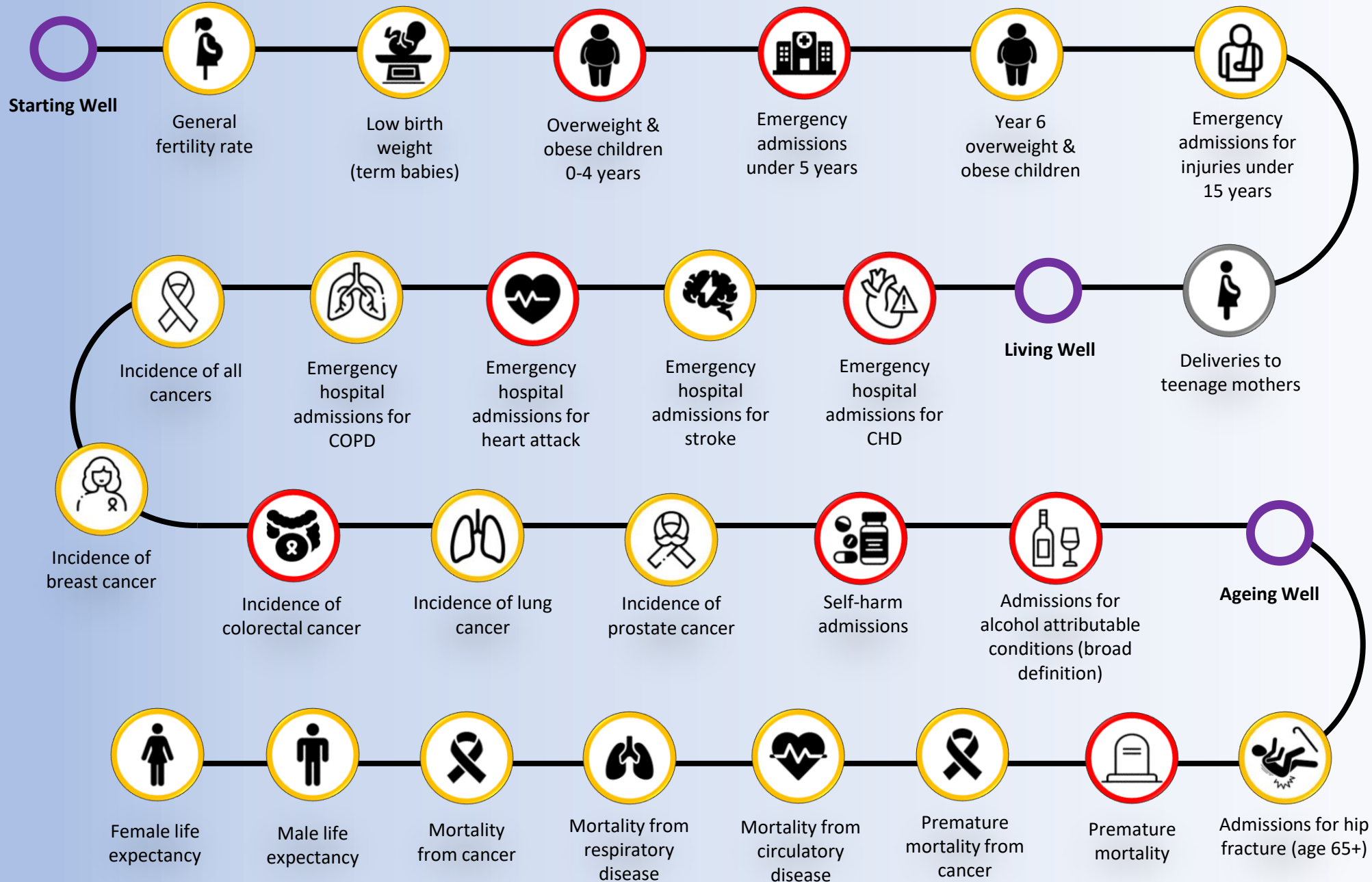
## Key

**Statistical significance to England**

- Better
- No Difference
- Worse
- Unavailable

# Ward Life Course Statistics 2023: Windle

A comparison to England



The life course map demonstrates the key points throughout life in which health is affected. For each event, Windle rates are compared to the England average to provide a snapshot of the health of the population at various stages of life.

## Additional Windle Facts

**Population:**  
About **11,000** people live in Windle

**Child poverty:**  
**19.5%** of children aged 0-15 in Windle live in income deprived families.

## Key

**Statistical significance to England**

- Better
- No Difference
- Worse
- Unavailable